

QUARTERLY NOISE REPORT THIRD QUARTER 2025



- Overview2
- Definitions2
- About MAA3
- Airport Operations.....4
- Jet Operations and Nighttime Activity4
- Most Frequent Aircraft Operations at BWI Marshall5
- Runway Use6
- Flight Corridors – Jet Arrivals.....7
- Flight Corridors – Jet Departures8
- Observance of Noise Abatement Procedures9
- Noise Monitoring Program.....10
- Residential Portable Noise Monitoring12
- Airport Noise Zone.....13
- Outreach and Community Involvement.....14
- Airport Noise Complaints.....14
- Community Enhancement Grant Program.....16
- Outreach and Community Involvement.....17
- DC Metroplex BWI Community Roundtable17
- WebTrak18



Overview This report provides a review of the aviation noise program for the Third Quarter of 2025 (July 1 to September 30). Included in this report is information on jet aircraft operations, observance rates for noise abatement procedures, complaints received about aircraft noise, and community outreach efforts by the Maryland Aviation Administration (MAA). The table below displays various measurements for 2025 in comparison to the Third Quarter of 2024.

Measurement	3rd Quarter (2024)	3rd Quarter (2025)
Average Daily Jet Operations	668	647
Average Daily Night-time Operations	107	118
Complaints to Noise Office	42,129	33,948
West Flow Operations	48%	51%



Definitions

Maryland Aviation Administration (MAA): Operator of Baltimore/Washington International Thurgood Marshall Airport (BWI Marshall Airport).

Decibel (dBA): A unit of measurement of sound pressure adjusted for the human ear’s response to particular frequencies.

Day-Night Average Sound Level (DNL or Ldn): A descriptor of 24-hour noise (midnight to midnight) that adds a ten-decibel (dB) nighttime penalty to noise events which occur between the hours of 10 p.m. and 7 a.m. to account for the intrusive nature of noise at night. This metric is required by FAA and COMAR.

Airport Noise Zone (ANZ): An area of land surrounding the airport within which noise levels are equal to or greater than DNL 65 dBA.

Code of Maryland Regulations (COMAR): Requires MAA to control development in areas where noise levels are DNL 65 dBA or more.



MAA Noise Section Mission Statement

The Noise Section of the Office of Environmental Compliance and Sustainability is committed to monitoring aircraft operations and airport-related noise levels in the communities surrounding BWI Marshall and Martin State Airports, and is dedicated to helping stakeholders understand the facts, science and regulations associated with airport noise in a transparent, clear, and accessible way to those we serve.

Website: <https://www.marylandaviation.com>

Noise complaints may be submitted at this website, via phone at (410) 859-7021, via WebTrak interface, via email to maanoiseabatement@bwiairport.com, via Airnoise.io, or via mail.



Frequently Asked Questions

MAA has developed a list of frequently asked questions regarding aircraft noise topics. The full list can be accessed at:

<https://marylandaviation.com/environmental/airport-noise/acronyms-faqs-more/>

Can MAA change flight paths?

No. The FAA controls and regulates the airspace. Any changes in departure or arrival paths must be approved and implemented by the FAA.

Who instructs aircraft where to fly?

The FAA is the sole organization in the United States responsible for the movement of aircraft both on the ground and in the air.

Will filing a complaint bring about an immediate change to flight paths?

Filing a complaint will not bring about an individual's desired change, rather it provides a means for the Airport to gather information, report, and disseminate the information to the FAA, airlines, public, and local representatives.

Why was I awoken last night by aircraft noise?

BWI Marshall Airport operates 24 hours per day, 365 days per year. There is no nighttime curfew at the airport.

Can MAA restrict where aircraft fly and when?

No.



Airport Operations

This section presents information on the level of operational activity at BWI Marshall Airport, including air traffic levels by jet aircraft, runway use, and flight corridors.

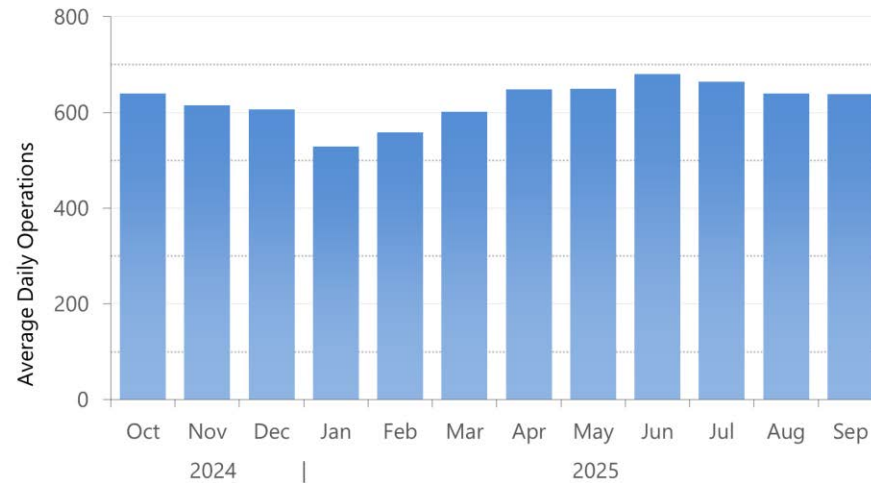


Jet Operations and Nighttime Activity

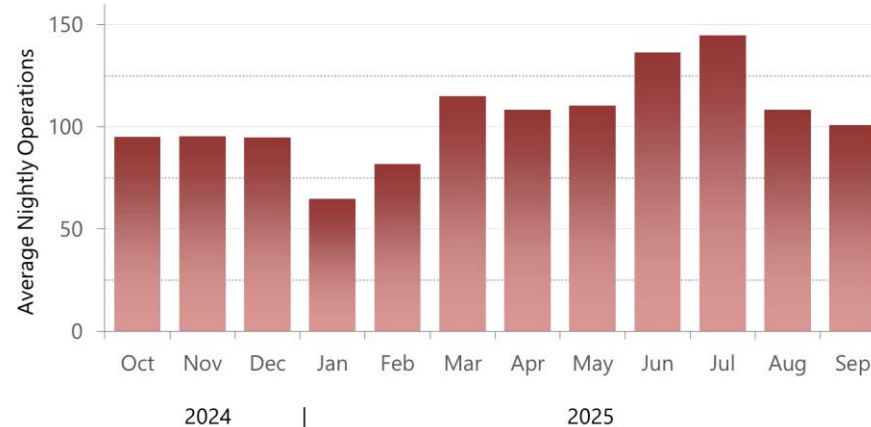
The first figure shows the average number of daily jet flights at BWI Marshall, including arrivals and departures by air carrier, business jet, and cargo jet aircraft. The figure also presents data for the preceding nine months, for a twelve-month total. The average daily number of jet operations during the Third Quarter of 2025 was 647.

The next figure presents nighttime air carrier, business jets and cargo jet operations. At BWI Marshall Airport, a nighttime operation is defined as an arrival flight or departure flight that occurs between the hours of 10 p.m. and 7 a.m. The average number of nighttime jet operations was 118 per night during the Third Quarter of 2025.

Average Daily Jet Operations



Average Nightly Passenger & Cargo Jet Operations



Most Frequent Aircraft Operations at BWI Marshall

The following table represents the top ten aircraft by type and operations count at BWI Marshall for the Third Quarter of 2025.



Third Quarter 2025 Top Ten Aircraft Operations	
Aircraft Type	Operation Count
Boeing 737-700	14,777
Boeing 737-800	14,429
Boeing 737-800 Max	12,664
Airbus A320 Neo	2,045
Airbus 320	1,542
Boeing 737-900	1,287
Boeing 767-300	1,286
Airbus A321 Neo	1,251
Airbus A321	1,047
Boeing 757-200	778

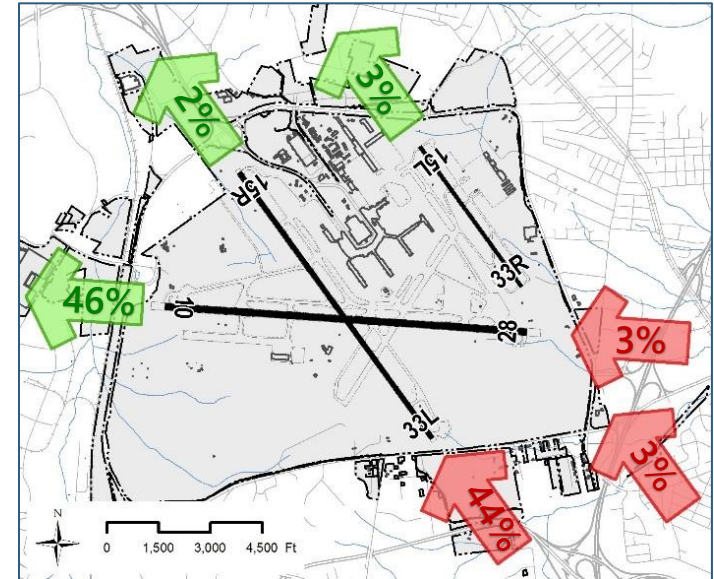
Runway Use

The MAA maintains a preferential runway use program to minimize the aircraft noise impact on neighboring communities. For noise abatement purposes, west flow (aircraft departures to the west) is preferred. Prevailing wind speed, direction and weather factors determine the direction of air traffic flow. Aircraft usually take off and land into the wind to meet safety and operational requirements. The figures to the right show jet runway use for the Third Quarter of 2025.

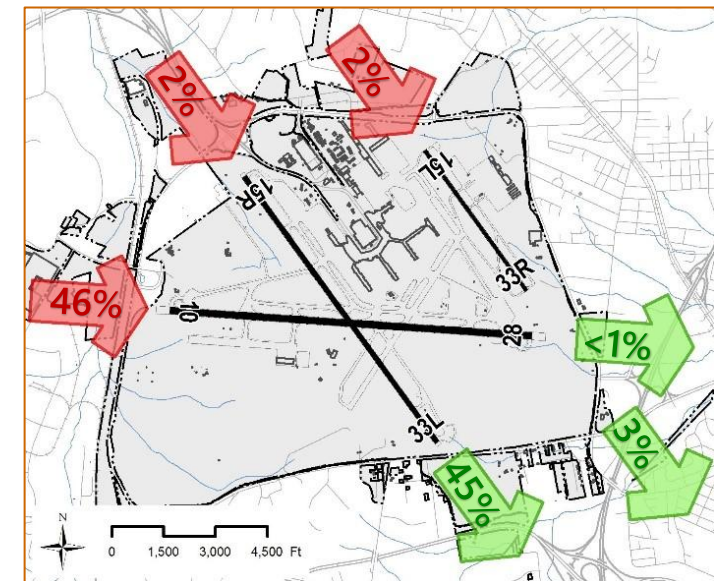
During west flow, all jet aircraft primarily depart (green arrows) from Runway 28 and arrive (red arrows) on Runway 33L, as shown in the top figure to the right. Historical trends result in an annual average west flow of about 70%.

During east flow, all jet aircraft primarily depart (green arrows) from Runway 15R and arrive (red arrows) on Runway 10, as shown in the bottom figure to the right. Historical trends result in an annual average east flow of about 30%.

West Flow Runway Use
 51% in Third Quarter 2025
 (Historical Annual Average of 70%)



East Flow Runway Use
 49% in Third Quarter 2025
 (Historical Annual Average of 30%)

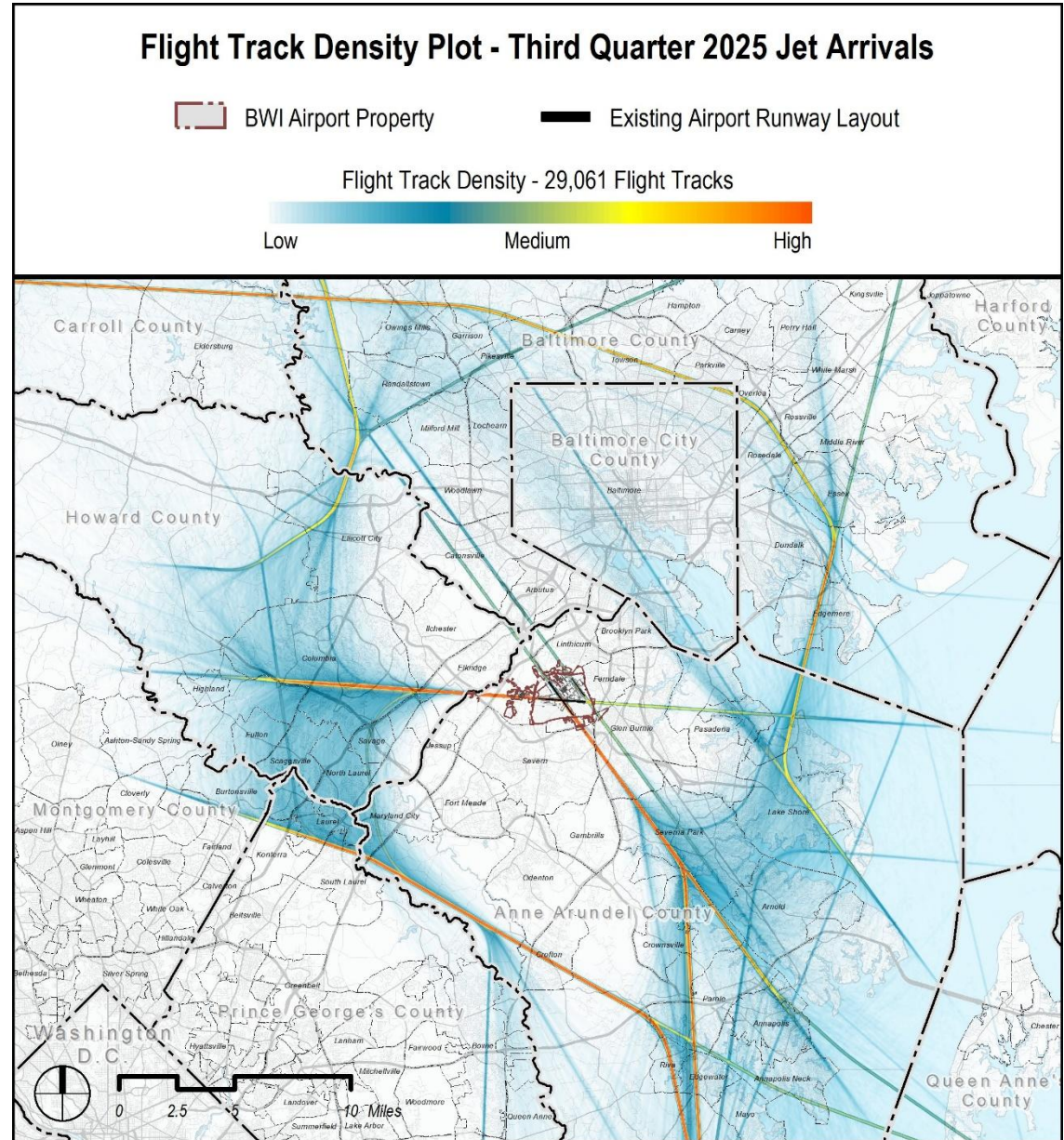


Flight Corridors – Jet Arrivals

The following figures depict the flight corridors at BWI Marshall Airport for jet arrivals and jet departures as derived from BWI Marshall Airport’s Noise and Operations Monitoring System (NOMS).

The figure on the right shows jet arrivals during the Third Quarter of 2025.

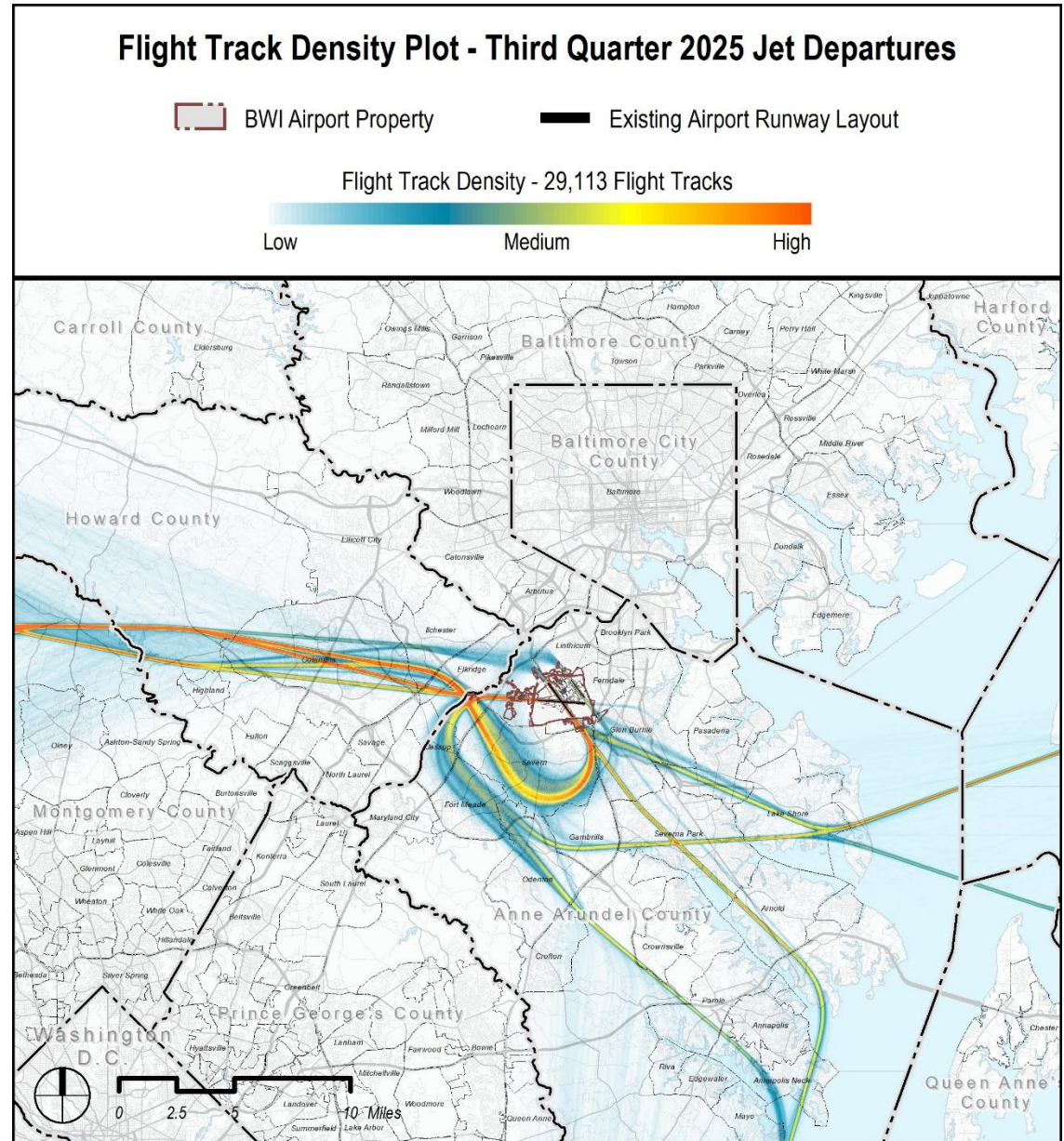
This flight track density plot uses color gradations to depict the flight track geometry, dispersion, and relative frequency of overflights. The color ranges are assigned based on the relative density of aircraft operations. Orange shows the highest density of flights, fading to yellow and then blue as the density decreases.



Flight Corridors – Jet Departures

The figure on the right shows jet departures during the Third Quarter of 2025.

This flight track density plot uses color gradations to depict the flight track geometry, dispersion, and relative frequency of overflights. The color ranges are assigned based on the relative density of aircraft operations. Orange shows the highest density of flights, fading to yellow and then blue as the density decreases.



Observance of Noise Abatement Procedures

Adherence to approved noise abatement measures is voluntary and subject to change based on weather, efficiency, and safety.

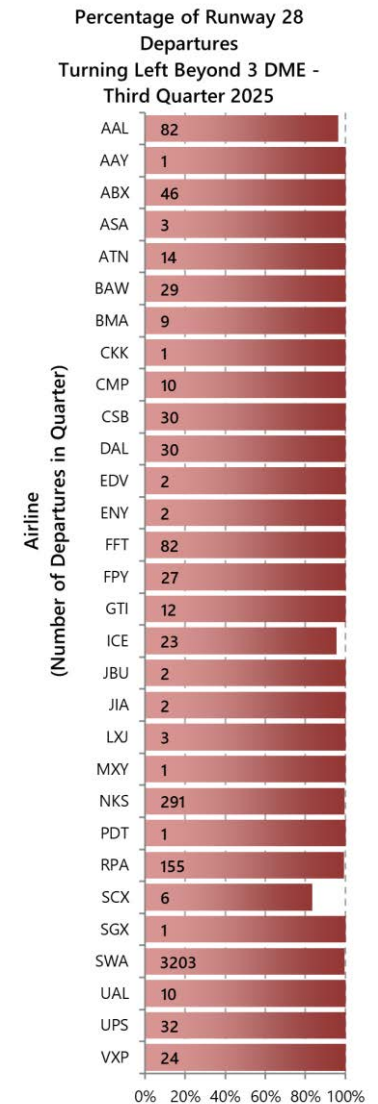
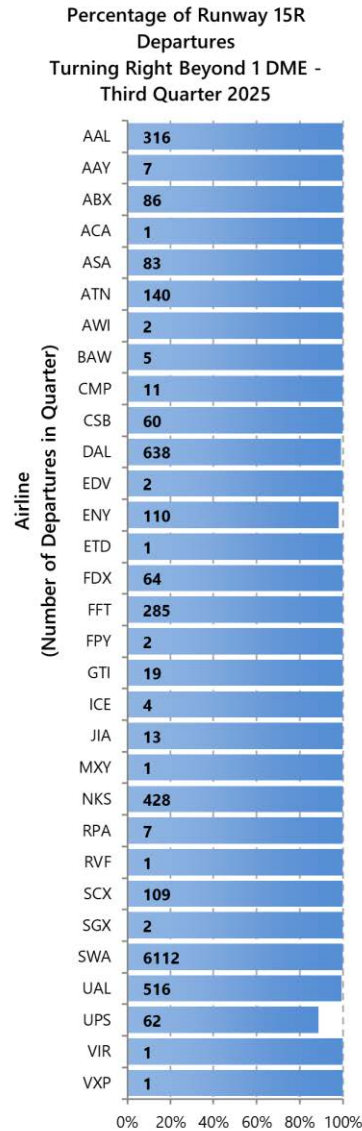
The graphs to the right show how the major carriers and cargo operators perform on the two noise abatement procedures of most interest to the local communities. These procedures are:

1. Runway 15R departures initiating their right turns at, but not prior to, 1 DME
2. Runway 28 departures initiating their turns at, but not prior to, 3 DME

The graphs show the percentage of flights for each airline which comply with each of the two procedures. Each bar also provides the number of operations by each airline subject to the noise abatement procedure. DME stands for Distance Measuring Equipment and is the measured slant range from the aircraft to the navigational aid located near the center of the Airport. One DME equals one nautical mile.

For the Third Quarter of 2025, 100% of departures turning right from Runway 15R initiated their turns beyond 1 DME.

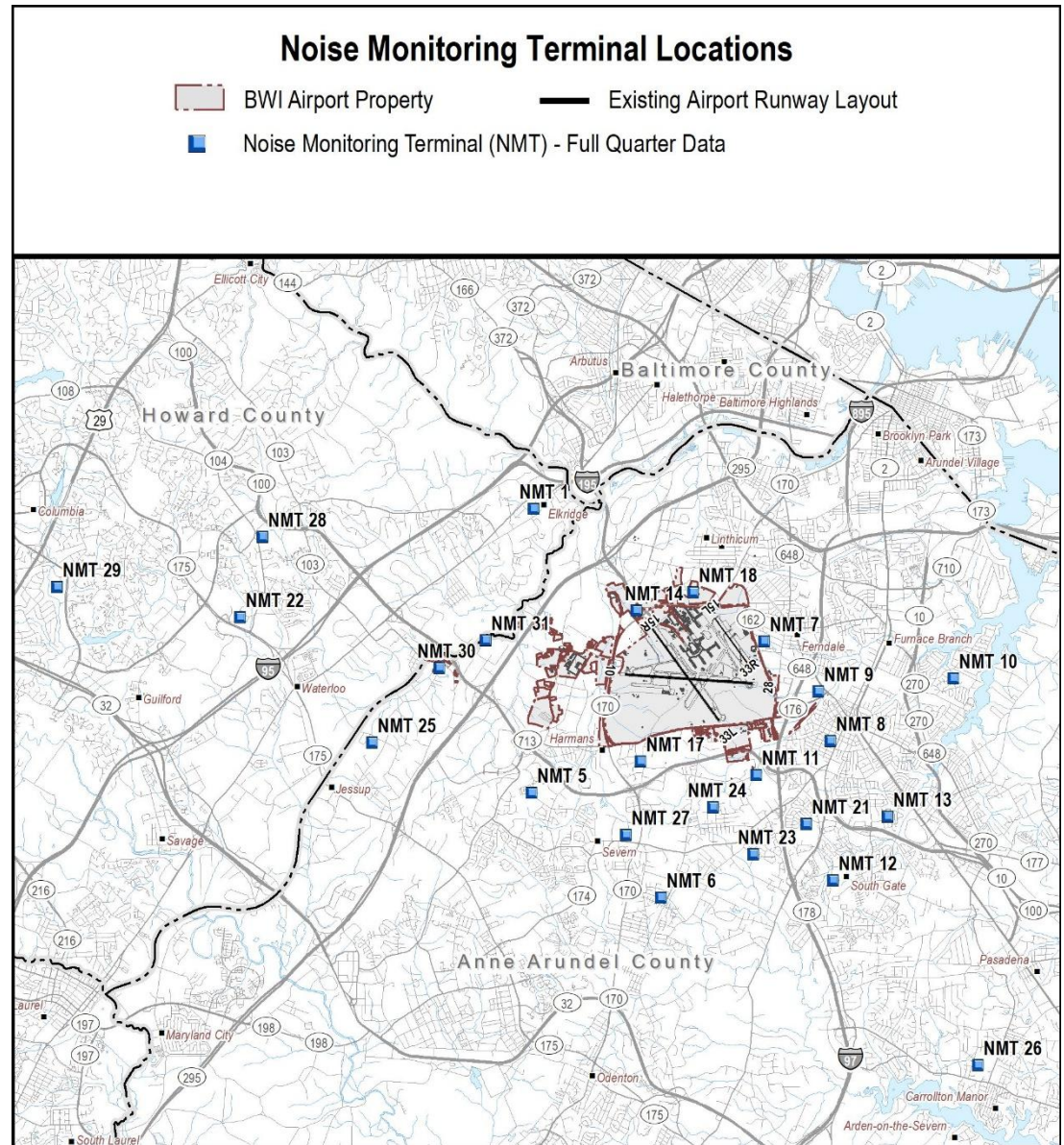
For the Third Quarter of 2025, 100% of departures turning left from Runway 28 initiated their turns beyond 3 DME.



 **Noise Monitoring Program**

MAA has 24 permanent Noise Monitoring Terminals (NMTs) located within the communities surrounding BWI Marshall Airport.

The table on the following page provides the quarterly Aircraft, Community, and Total DNL values at each site. At some sites, community or environmental noise levels (street traffic and other neighborhood noises) exceed aircraft noise levels.



Third Quarter 2025 Aircraft, Community and Total DNL				
NMT#	Location	Aircraft DNL (dBA)	Community DNL (dBA)	Total DNL (dBA)
1	St. Augustine Church, Elkridge	44.1	59.9	60.0
5	Hebron-Harman Elementary, Hanover	49.6	60.4	60.7
6	Delmont United Methodist, Severn	52.8	59.7	60.4
7	Wicklow Woods, Ferndale	52.5	59.4	60.3
8	Richard H. Lee Elementary School, Glen Burnie	51.3	60.8	61.2
9	Maryland National Guard Armory, Glen Burnie	55.3	62.3	63.1
10	Margate Pumping Station, Glen Burnie	46.3	64.6	64.6
11	Jones Rd., Queenstown	69.6	62.3	70.3
12	Rippling Woods Elementary, Glen Burnie	62.0	59.4	63.9
13	Woodside Elementary, Glen Burnie	52.7	62.9	63.3
14	Runway 15R Approach	60.3	65.2	66.4
17	Timber Ridge Rd., Hanover	39.6	60.9	60.9
18	Runway 15L Approach	56.1	62.4	63.4
21	Glen Burnie Park Elementary, Glen Burnie	61.2	61.3	64.2
22	Lark Brown Road, Columbia	56.6	60.5	62.0
23	Quarterfield Elementary, Severn	59.7	60.6	62.9
24	Poplar Grove HOA, Elmhurst, Severn	47.8	60.7	60.9
25	Belclare Court, Jessup	53.3	58.8	59.9
26	Benfield Elementary, Severna Park	56.5	57.6	60.1
27	Severn Elementary School	45.4	62.2	62.3
28	Maryland School for the Deaf, Ellicott City	45.8	60.8	60.9
29	MDOT Motor Vehicle Administration, Columbia	52.5	57.0	58.3
30	Forest Ave, Hanover	64.8	63.0	67.0
31	Race Road, Hanover	61.7	61.0	64.3

Residential Portable Noise Monitoring

The portable noise monitoring program is conducted by the MAA's Office of Environmental Compliance and Sustainability - Noise Section.

The residential portable monitoring program measures noise levels in selected areas on a temporary basis (typically for a two-week period) upon request of a homeowner. The final report provides aircraft noise levels for each day, the percentage of east/west operations, and general information about noise measurements and airport operations.

Portable Noise Monitoring Reports and online applications for residential portable noise monitoring can be found here:

<https://marylandaviation.com/application-for-portable-noise-monitoring/>

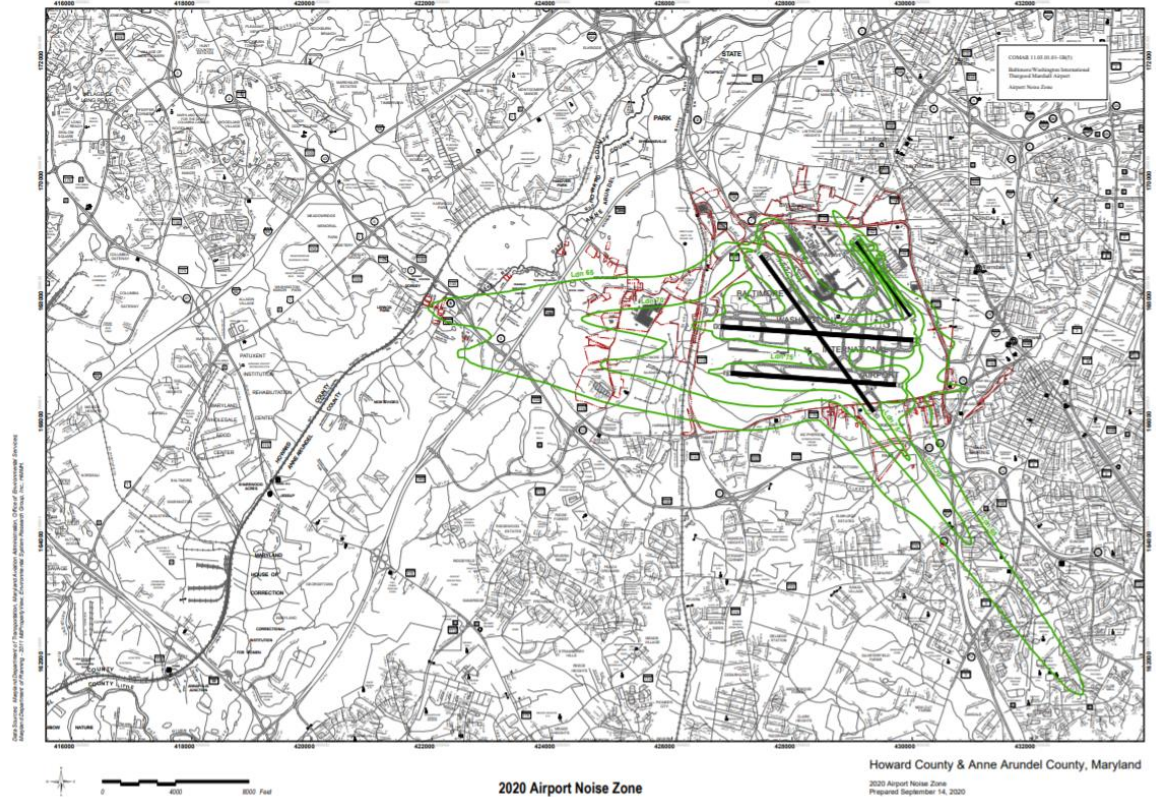




Airport Noise Zone

The Maryland Environmental Noise Act of 1974 provides for the protection of citizens from the impact of transportation-related noise. The aviation portion of the Act requires the MAA to create a certified Airport Noise Zone (ANZ) to control incompatible land development around BWI Marshall Airport and a Noise Abatement Plan (NAP) to minimize the impact of aircraft noise on people living near the Airport. An ANZ and NAP were first established for BWI Marshall Airport in 1976. The latest update to the ANZ became effective on April 19, 2021.

The ANZ is a composite of three noise contours: a base year contour, a five-year forecast, and a ten-year forecast. The contours depict the Day-Night Average Sound Level (DNL) around the Airport. Both the State of Maryland and the FAA require the use of the DNL metric by all airports conducting environmental studies. The ANZ represents the largest extent of the DNL contours for all three years included in the study and is defined to provide the largest area of protection for existing or future noise exposure contours.



MAA updated the BWI Marshall and Martin State Airport Noise Zones in 2020. The current BWI 2020 ANZ is depicted above. More information is available on the Maryland Aviation Airport Noise website at www.marylandaviation.com.

Further information on the ANZ can be found here:

<https://marylandaviation.com/environmental/airport-noise/bwi-marshall-airport-noise-zone/>

Outreach and Community Involvement

The MAA engages in on-going efforts to enhance the level of communication and interaction between the Airport and area residents.

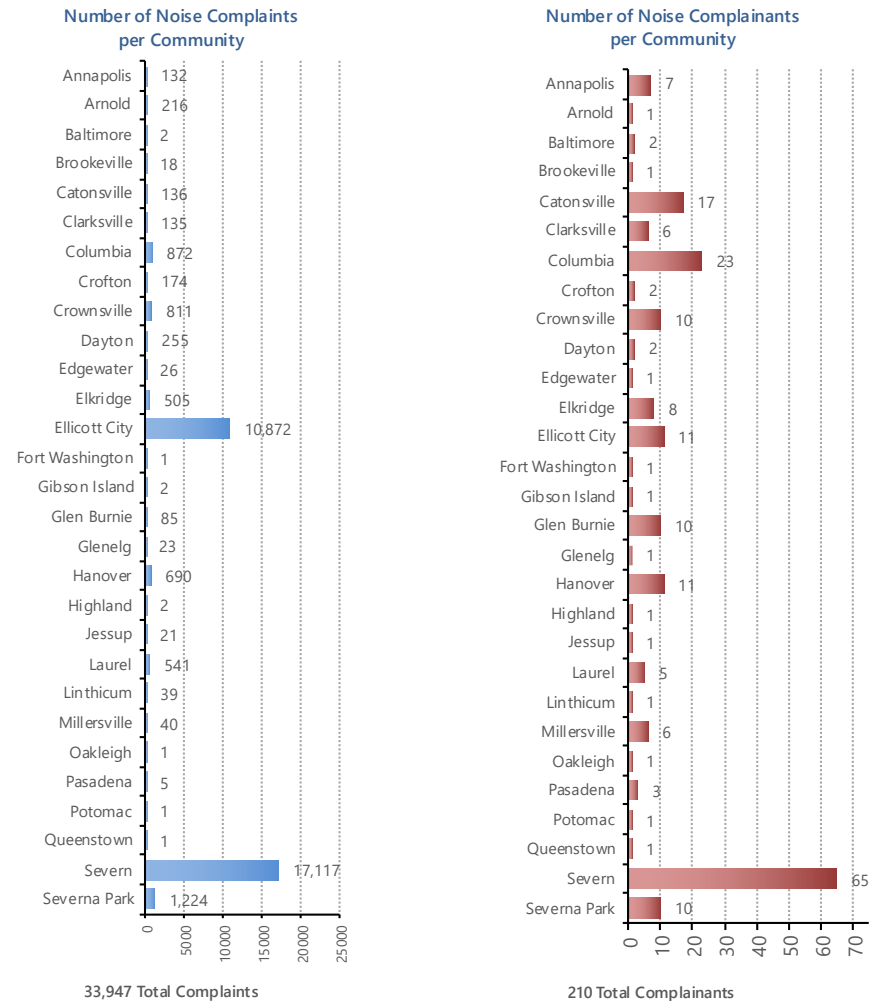
Airport Noise Complaints

The MAA maintains a 24-hour Airport Noise Hotline at (410) 859-7021. Noise complaints can also be entered online at:

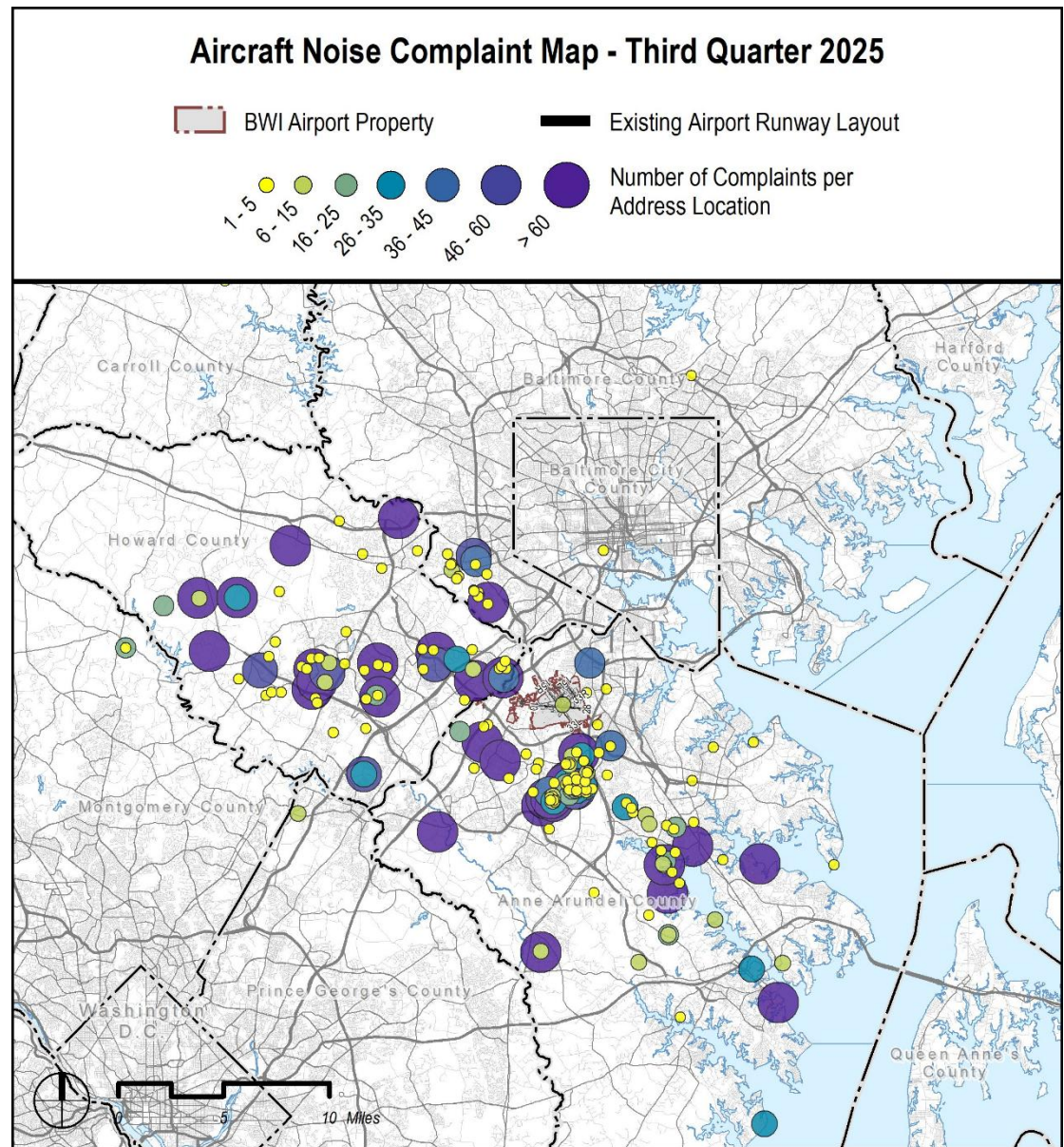
<https://marylandaviation.com/environmental/airport-noise/noise-complaints/>

The graphs show the number of complaints and complainants per community for the quarter.

There were 33,947 complaints (210 complainants) during the Third Quarter of 2025.



The map to the right shows the locations and number of complaints for the Third Quarter of 2025. The size and color of each caller location denotes the number of times a complaint was submitted during the quarter. Small yellow circles depict locations with fewer complaints while large darker circles depict greater numbers of complaints.



Community Enhancement Grant Program

Maryland Senate Bill 276 established a 12 member (Legislative Update Oct. 2024) “Citizens Committee for the Enhancement of Communities Surrounding Baltimore/Washington International Thurgood Marshall Airport.”

The intent of this legislation is to provide some benefit to those citizens living in communities impacted by the daily operation of BWI Marshall by allowing them the opportunity to apply for grants for transportation-related projects such as sidewalks, speed humps, streetlights, etc. These communities must be located within the 1998 certified Airport Noise Zone or within two miles of the outermost noise contour.

For more information about the application process, or to get more involved, please see: <https://marylandaviation.com/environmental/airport-noise/transportation-community-enhancement-grants-program/>


The Community Enhancement Grant Committee met via TEAMS virtual platform on September 17, 2025. One grant was recommended in aid pursuant to Section 2-103(i)(2) of the Transportation Article of the Annotated Code of Maryland.

Example of Eligible Project



Example of Completed Project




 **Outreach and
Community Involvement**

The MAA engages in on-going efforts to enhance the level of communication and interaction between the Airport and area residents.

The MAA Community Outreach Programs encourage the exchange of information between the MAA and local community groups and residents. These programs supplement the efforts of the BWI Marshall Airport Neighbors Committee to promote the active participation of local residents in Airport issues.

Specific services or activities provided by the MAA are listed in the table to the right along with the number of events or recorded reports.

 **DC Metroplex BWI Community
Roundtable**

The DC Metroplex BWI Community Roundtable is an MAA initiative formed at the request of the Federal Aviation Administration (FAA).

More information about the Roundtable, including meeting agendas, past meeting minutes, and presentation materials, is available at: www.marylandaviation.com.

Public Education & Activities – Third Quarter of 2025	
Committee Meetings	1
Community Meetings	2
Community Noise Monitoring Reports	3
Airport Zoning Permits	63
eNews Express notifications	24

 **Community Roundtable Meetings – Third Quarter of 2025**

- Roundtable meetings were held August 26, 2025 and September 19, 2025.
 - See the MarylandAviation.com website for related meeting information [DC Metroplex BWI Community Roundtable - Maryland Aviation Administration](#)

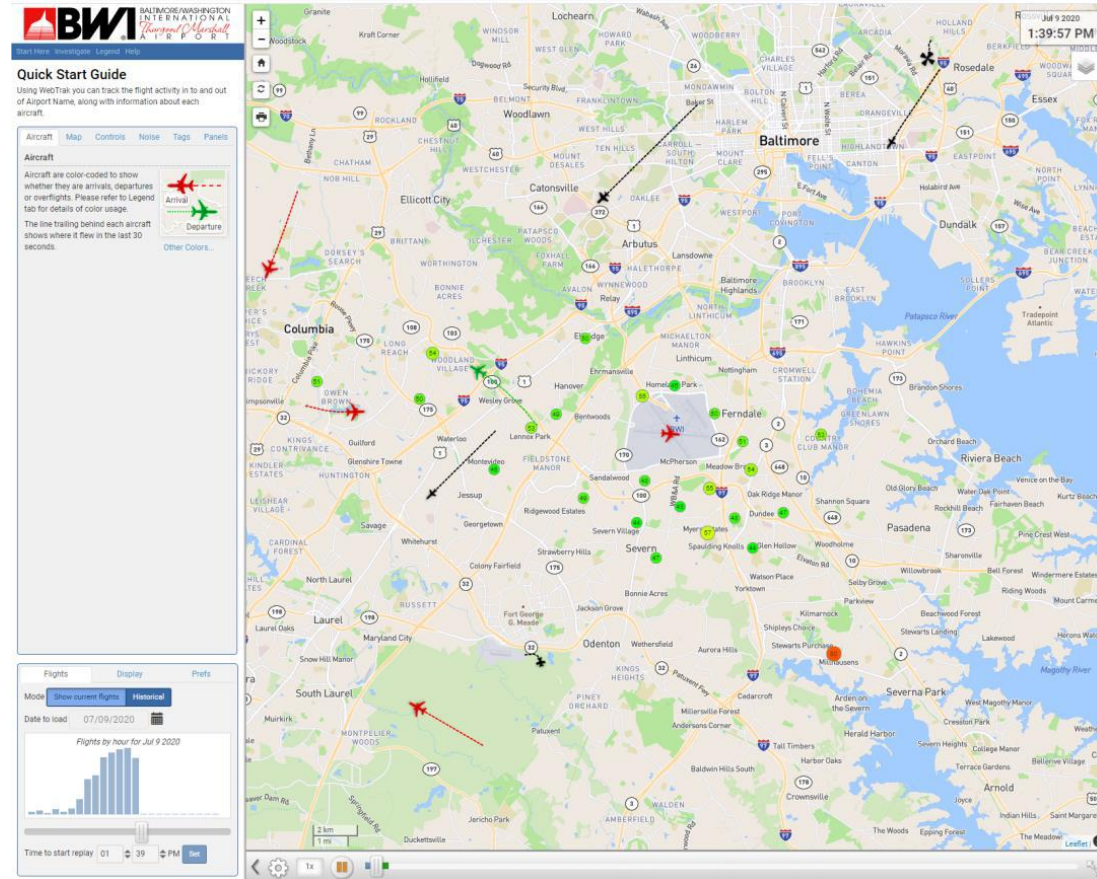


The BWI Marshall WebTrak system can be accessed from the airport website at:

<https://bwiairport.com/flying-with-us/about-bwi/aircraft-noise-webtrak/> or the Maryland Aviation Airport Noise website at: <https://marylandaviation.com/environmental/airport-noise/online-noise-and-flight-tracking/>

The WebTrak system provides historic and near real-time flight tracking information, as well as noise level data for users. The tool displays aircraft flights, weather information, BWI Marshall Airport noise monitor locations, and aircraft noise levels on a user-friendly map. The flight tracking system includes specific details about flights associated with BWI Marshall Airport, as well as information on air traffic transitioning through the region.

WebTrak users can research aircraft noise concerns by replaying flight tracks from specific times. The system's location tools enable users to clearly see flights relative to their location. Live data is delayed approximately 16 minutes for system data processing and aviation security requirements. Historic data can be viewed and is available for 90 days. Users may submit aircraft noise complaints to the MAA directly from the WebTrak system.



Office of Environmental Compliance and
Sustainability - Noise Program

P.O. Box 8766

BWI Airport, MD 21240-0766

Noise Complaints

BWI Noise Hotline: (410) 859-7021

Online:

<https://marylandaviation.com/environmental/airport-noise/noise-complaints/>