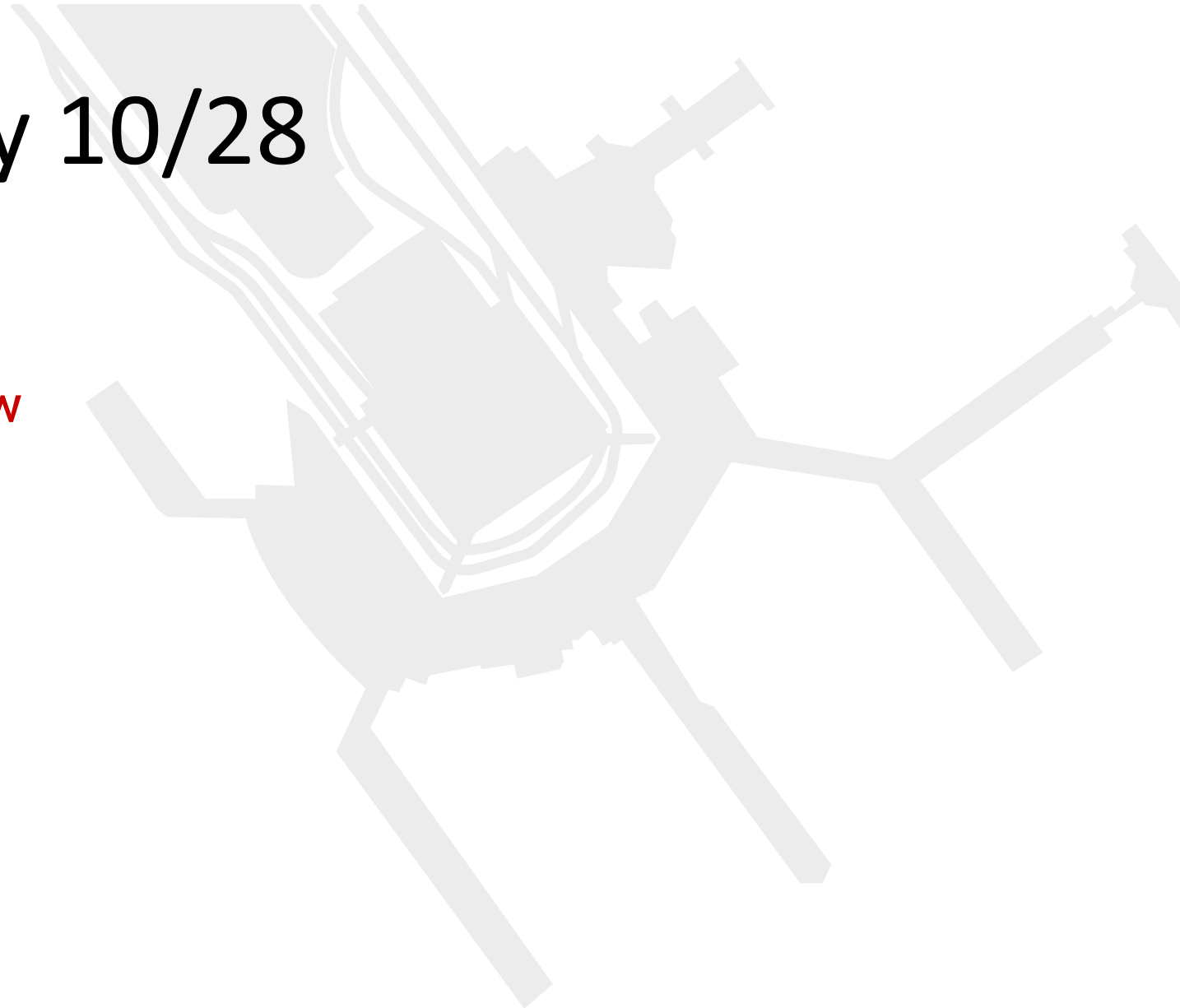


April 2025 Runway 10/28 Closure

Public Outreach Overview

Date: March 4, 2025
Bruce Rineer, Manager, Noise Section

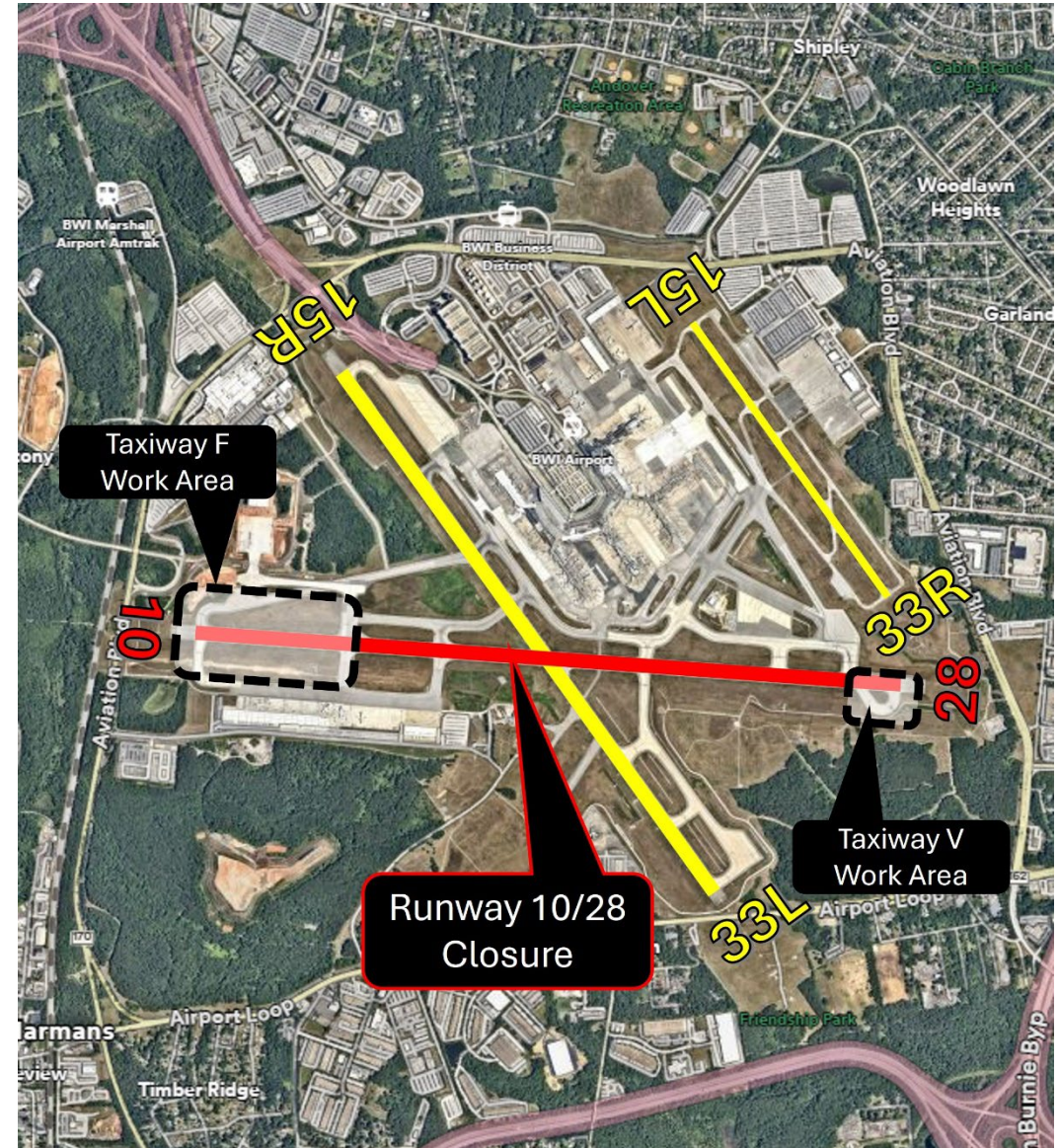


Planned Runway 10/28 Closure

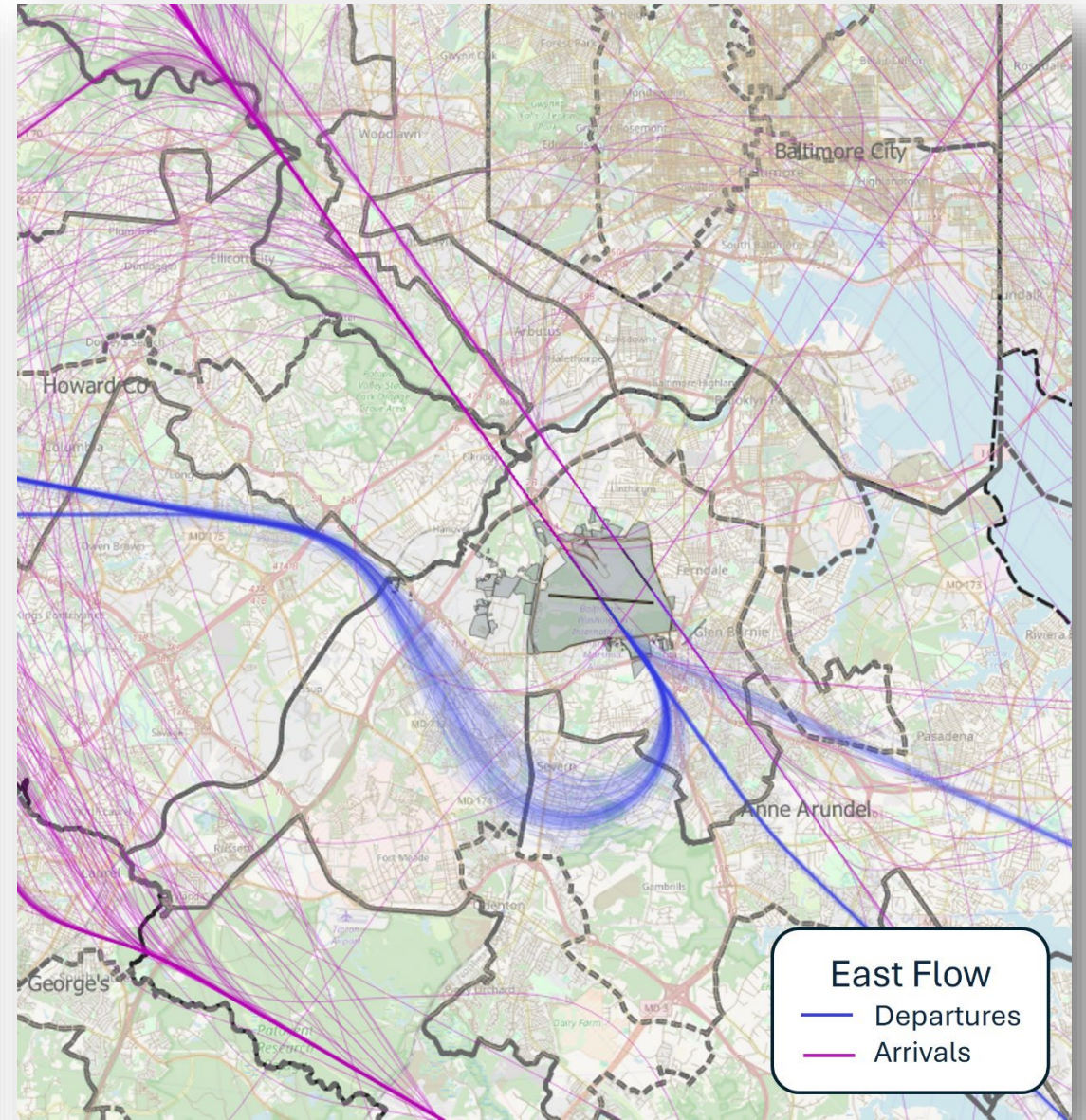
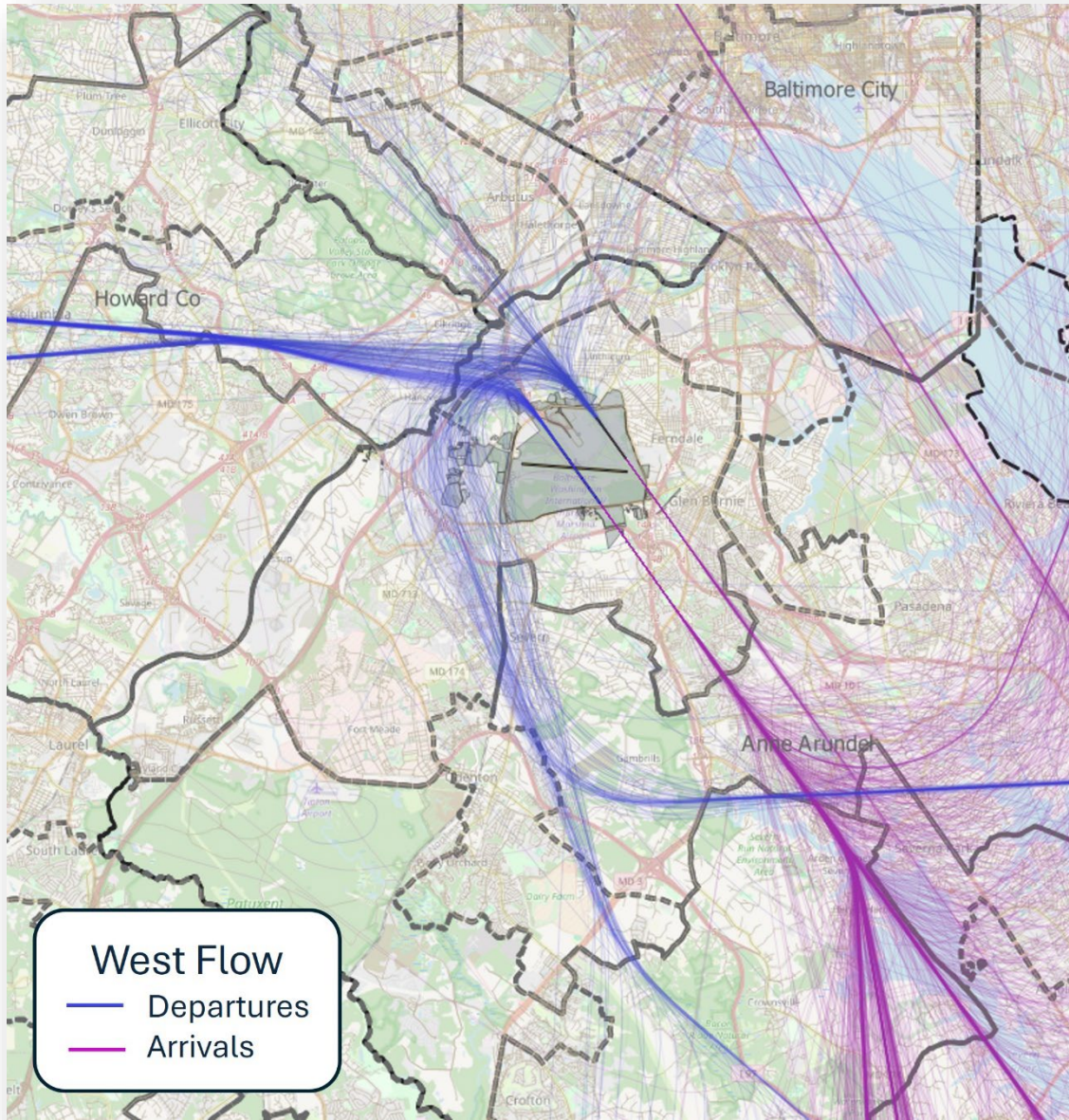
What: Runway 10/28 Full Runway Closure

When: Between April 9th and May 6th, 2025 (as currently scheduled)

Details: Taxiway work to support pavement removal/replacement airfield lighting replacement, grading, and stormwater management.

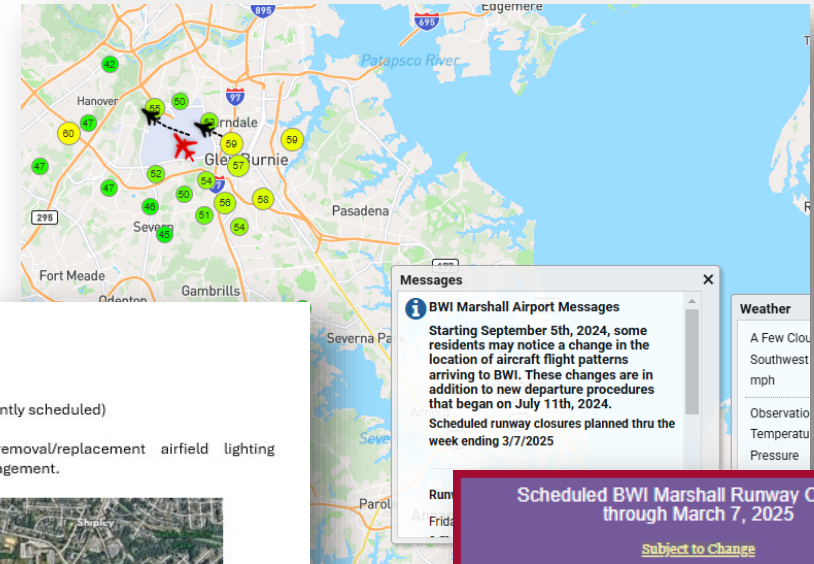


Anticipated Operations



MAA Plan for Community Outreach

- Notification to Elected Officials
- Updates on MAA website
- Publication via eNews Express
- Publication via WebTrak
- Incorporation in noise complaint communications



Project Information Sheet

What: Runway 10-28 Full Runway Closure

When: Between April 9th and May 6th, 2025 (as currently scheduled)

Details: Taxiway work to support pavement removal/replacement airfield lighting replacement, grading, and stormwater management.

An aerial photograph of the airport terminal and surrounding runways. Runway 10/28 is highlighted in red and labeled 'Runway 10/28 Closure'. Other runways and taxiways are labeled: Taxiway F, Taxiway V, 15R, 15L, 33R, and 33L. The terminal building is visible in the center.

Scheduled BWI Marshall Runway Closures through March 7, 2025
[Subject to Change](#)

Runway 10/28 Closures
March 6, 2025
12:30AM - 5:00AM

Runway 15R/33L Closures
Feb 28 - March 5, 2025
12:30AM - 5:00AM
March 4
10:00AM - 2:00PM
March 8
12:30AM - 5:00AM

Runway 15L/33R Closures
March 5, 2025
10:00AM - 5:00AM

Thank You.

Maryland Aviation Administration

