



BWI-Thurgood Marshall Airport Operations and Noise Exposure

Presented by DC Metroplex BWI Community Roundtable in cooperation with Vianair, Inc

Monthly Report for September 2023

DC Metroplex BWI Community Roundtable link to Noise Exposure Monthly Reports below

<https://marylandaviation.com/environmentals/environmental-compliance-sustainability/dc-metroplex-bwi-community-roundtable>

Table of Contents

Table of Contents.....	Page 2
Introduction.....	Page 3
What is the Virtual Noise Monitoring Grid?.....	Page 4
Definitions.....	Page 5
Disclaimer and Information Sources and Disclosures.....	Page 6
Seeking Balance at BWI-Marshall Airport.....	Page 7
Economic Impact/Commercial Aviation and Health.....	Page 8
Runway Use.....	Page 9
East and West Flow.....	Page 10
Visual Representation – East Flow Typical Day.....	Page 11
West Flow Operations - DNL Noise Exposure.....	Page 12
Visual Representation – East Flow Typical Day.....	Page 13
West Flow Operations - DNL Noise Exposure.....	Page 14
Visual Representation – East Flow Typical Day.....	Page 13
East Flow Operations - DNL Noise Exposure.....	Page 14
Monthly Noise Exposure – Anne Arundel County Landmark Locations East and West Flow.....	Page 15
Monthly Noise Exposure – Howard County Landmark Locations East and West Flow.....	Page 16
Regional Maps of BWI-Marshall Noise Pollution.....	Page 17
Noise Exposure – DNL Contours Howard and Anne Arundel Counties.....	Page 18
Flight Track Density – Heat Map of Anne Arundel and Howard Counties.....	Page 19
Noise Exposure- Number of Events Above 55 dBA – Anne Arundel County Landmark Locations Only.....	Page 20
Noise Exposure- Number of Events Above 55 dBA – Howard County Landmark Locations Only.....	Page 21
Noise Exposure- Number of Events Above 55 dBA – Anne Arundel County Full Virtual Monitor Grid.....	Page 22
Noise Exposure- Number of Events Above 55 dBA – Howard County Full Virtual Monitor Grid.....	Page 23
Noise Exposure – Full Virtual Noise Monitor Grid, All Operational Flows.....	Page 24
Monthly Operations Daytime vs. Nighttime.....	Page 25
Monthly Operations.....	Page 26
Aircraft Operations.....	Page 27
Aircraft Noise Basics.....	Page 28
Noise Basics.....	Page 29
Why the DNL metric is controversial.....	Page 30
For More Information.....	Page 31



Introduction

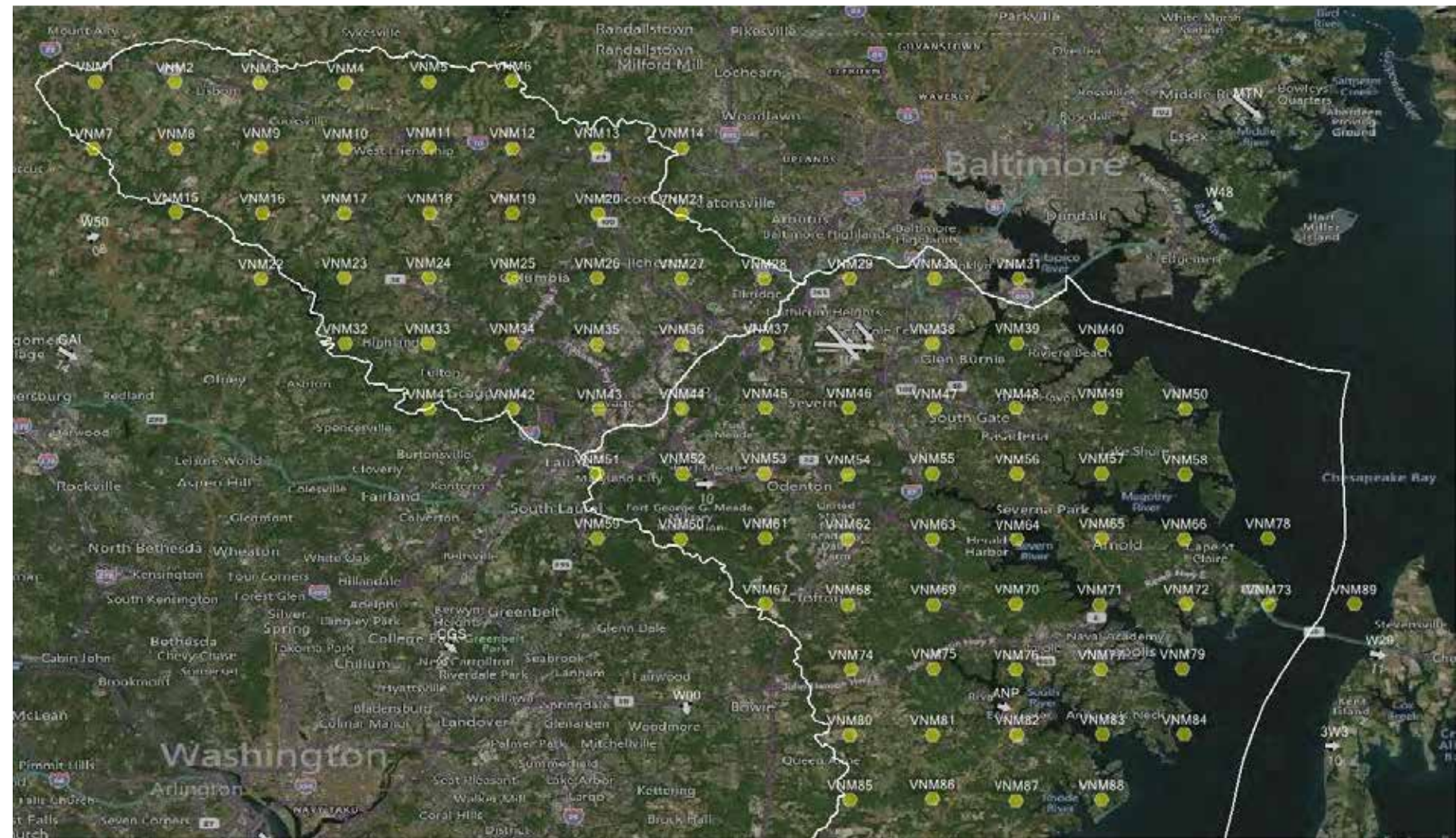


The Monthly Reports are the first comprehensive data detailing the noise pollution generated by daily commercial jet plane operations across the entire geography of significantly overflowed communities in our region. The BWI roundtable believes that the analysis of the full environmental impact of airport operations on overflowed communities has been understudied, but it is essential information in order to improve the likelihood of success in achieving balanced solutions for the complex set of stakeholders involved in airport operations.

Howard and Anne Arundel Counties hired Vianair to help analyze flight activity in and out of BWI Thurgood Marshal Airport ("BWI-Marshall"). In coordination with representatives from the two counties and support from the BWI Roundtable, Vianair developed the Monthly Report which includes the analysis of key elements (operational and acoustic) to help the wide array of stakeholders understand the existing noise exposure and to provide the ability to track changes over time.

While comprehensive, the elements in the report were selected by those who contributed to the report development (representatives from the two counties and the BWI Roundtable). This report will be published monthly, beginning with March 2022. Report content may change based on input from the contributors and/or the community. This report uses A-weighted decibels or dBA and DNL, described later within this summary report.

What is the Virtual Noise Monitoring Grid?



The BWI Roundtable could locate no single data source covering the entire region for the noise pollution generated by commercial aviation at BWI-Marshall. Although the Maryland Aviation Administration (MAA) maintains noise 24 permanent monitors in areas immediately surrounding the airport, these monitors are not widely dispersed across the entirety of overflowed communities. Therefore, the Roundtable asked Vianair, Inc. to establish a **virtual noise monitoring grid** with a total of 89 monitors evenly spread at 2.5-mile intervals covering most of Anne Arundel and Howard Counties (see the map on this page). An additional 36 locations in each county were selected, representing specific areas of interest or “Landmarks” (see pages 5 and 6 of this Executive Summary). The result is a total of 125 discrete locations for which aircraft noise data is collected and analyzed. These locations are referred to as “virtual noise monitor locations” in this report and result in more comprehensive coverage of the study area.



Definitions

Decibel (dB(A)): A unit of measurement of sound pressure adjusted for the human ear's response to particular frequencies

Day-Night Average Sound Level (DNL): A descriptor of 24-hour noise (midnight to midnight) that adds a ten-decibel (dB) nighttime penalty to noise events which occur between the hours of 10 p.m. and 7 a.m to account for the intrusive nature of noise at night. DNL is the standard metric used by the Federal Aviation Administration (" FAA") as required by federal regulation. Federal guidelines require DNL 65 as the level of aircraft noise exposure that is incompatible with noise-sensitive applications including residential development. This metric is required by FAA and COMAR

The Noise-above (NA): A noise metric counts the number of times the noise level exceeds a specific threshold. In this report, the Number-of-Events-Above 55 metric (NASS) is calculated. NASS quantifies the number of aircraft events resulting in noise exposure of 55 decibels or higher at each location depicted.

Day-evening-night level (Lden): It is a descriptor of noise level defined by the European Environment Agency ("EEA") and based on energy equivalent noise level (Leq) over a whole day with a penalty of 10 dB(A) for night-time noise (11.00 pm -7.00 am) and an additional penalty of 5 dB(A) for evening noise (7.00 pm -11.00 pm).

Airport Noise Zone (ANZ): An area of land surrounding the airport within which noise levels are equal to or greater than DNL 65 dBA.

Maryland Department of Transportation Maryland Aviation Administration (MDOT MAA): Operator of Baltimore/ Washington International Thurgood Marshall Airport (BWI Marshal I Airport).

Code of Maryland Regulations (COMAR): Requires MDOT MAA to control development in areas where noise levels are DNL 65 dBA or more..



Disclaimer and Information Sources and Disclosures

Disclaimer: The views and opinions expressed in this document are those of the BWI Roundtable and do not necessarily reflect the views or positions of the state senators who appoint voting members to the BWI Roundtable, the MDOT/MAA, the FAA, Howard or Anne Arundel County elected or appointed officials, commercial carriers, or Vianair, Inc. Technical presentations prepared by Vianair are labeled with the Vianair logo.

Information Sources and Disclosures:

Page 7 - Economic Impact of BWI-Marshall. **Regional Economic Impact of BWI Marshal Airport, December 2017, a brochure of the Maryland Aviation Administration.** In response to a Public Information Act (PIA) request made on November 1, 2022, MDOT/MAA provided "The Economic Impact of Public Use Airports in Maryland", July 2015. The study was prepared by Martin Associates and Landrum and Brown, consultants. MDOT/MAA states that "The 2017 Economic Impact Brochure [..] is an update to the 2015 Economic Impact Report. The 2015 Economic Impact Report and Monthly BWI Statistical Report Summaries serve as the source for the 2017 Economic Impact Brochure." Once the BWI Roundtable verifies the underlying sources of the brochure's statements, we will update this section.

Page 7 - Commercial Aviation and Health.

- Zafari Z and Park, J. "Projecting the health and economic burden of aircraft noise". University of Maryland School of Pharmacy, 2022

<https://www.pharmacy.umaryland.edu/media/SOP/wwwpharmacyumarylandedu/about/depts/p-shor/pdf/projecting-the-health-and-economic-burden-of-aircraft-noise-final-report.pdf>

- Quarterly Noise Reports, Maryland Aviation Administration

<https://marylandaviation.com/environmental/environmental-compliance-sustainability/quarterly-noise-reports/>

- World Health Organization: Environmental Noise Guidelines for the European Union. 2018

https://www.euro.who.int/data/assets/pdf_file/0008/383921/noise-guidelines-eng.pdf

- European Environment Agency: European Noise Directive. 2018

<https://www.eea.europa.eu/airs/2018/environment-and-health/environmenta1-noise>

Seeking Balance at BWI-Marshall Airport

The growth in operations at BWI-Marshall brings a number critically important social and economic impacts to communities surrounding the airport and to the State of Maryland. These include economic development, jobs, and taxes revenues. However, this also results in significant negative impacts, especially for residents of Anne Arundel and Howard counties, including stress, likely adverse health outcomes and a diminished quality of life. **Over the course of our almost six (6) years of existence, the BWI Roundtable has come to believe those impacts are unsustainably unbalanced in favor of economic impacts in our region.**



Economic Impact of BWI-Marshall

Airport-Generated	Visitor-Generated
\$4.4 B Total Impact	\$4.9 B Total Economic Impact
<u>Total Jobs 24,211</u> Direct 12,753 Indirect 11,458	<u>Total Jobs 82,277</u> Direct 46,857 Indirect 35,420
\$1.6 B Total Earnings	\$2.5 B Total Earnings
\$175.4 M Total State/Local Taxes	\$416.5 M Total State/Local Taxes

State taxes are estimated to be \$336.3 million and Local taxes are estimated to be \$255.7 million

Commercial Aviation and Health

University of Maryland- Baltimore study shows over \$800 million (2022 dollars) in health costs over 30-years from current BWI-Marshall operations

123,133 BWI-Marshall noise complaints (230 individuals) during 2nd Quarter of 2022. The airport received a total of 620,276 noise complaints in 2021.

The World Health Organization recommends aircraft noise levels in Europe to below 45 dB during the day (40 dB at night). Higher levels of noise is associated with adverse health effects.

55 dB Lden is the EU threshold for excess exposure defined in the Environmental Noise Directive

FAA has adopted 65 dBA DNL as the threshold of significant noise exposure, below which residential land uses are compatible

BWI Airport Noise Zone is noise above 65 dBA DNL

Runway Use

BWI has six runways: 10, 15R, 15L, 28, 33R, and 33L. Runway selection is based primarily on wind direction. BWI operates in two flows. When winds are out of the east or south, aircraft will arrive and depart in an **EAST FLOW** and when winds are out of the west or north, aircraft will arrive and depart in a **WEST FLOW**. Aircraft noise levels vary when below an aircraft landing or taking-off. Runway use also influences routes to and from the airport, which also affects aircraft noise for communities below.



EAST FLOW



WEST FLOW



East and West Flow

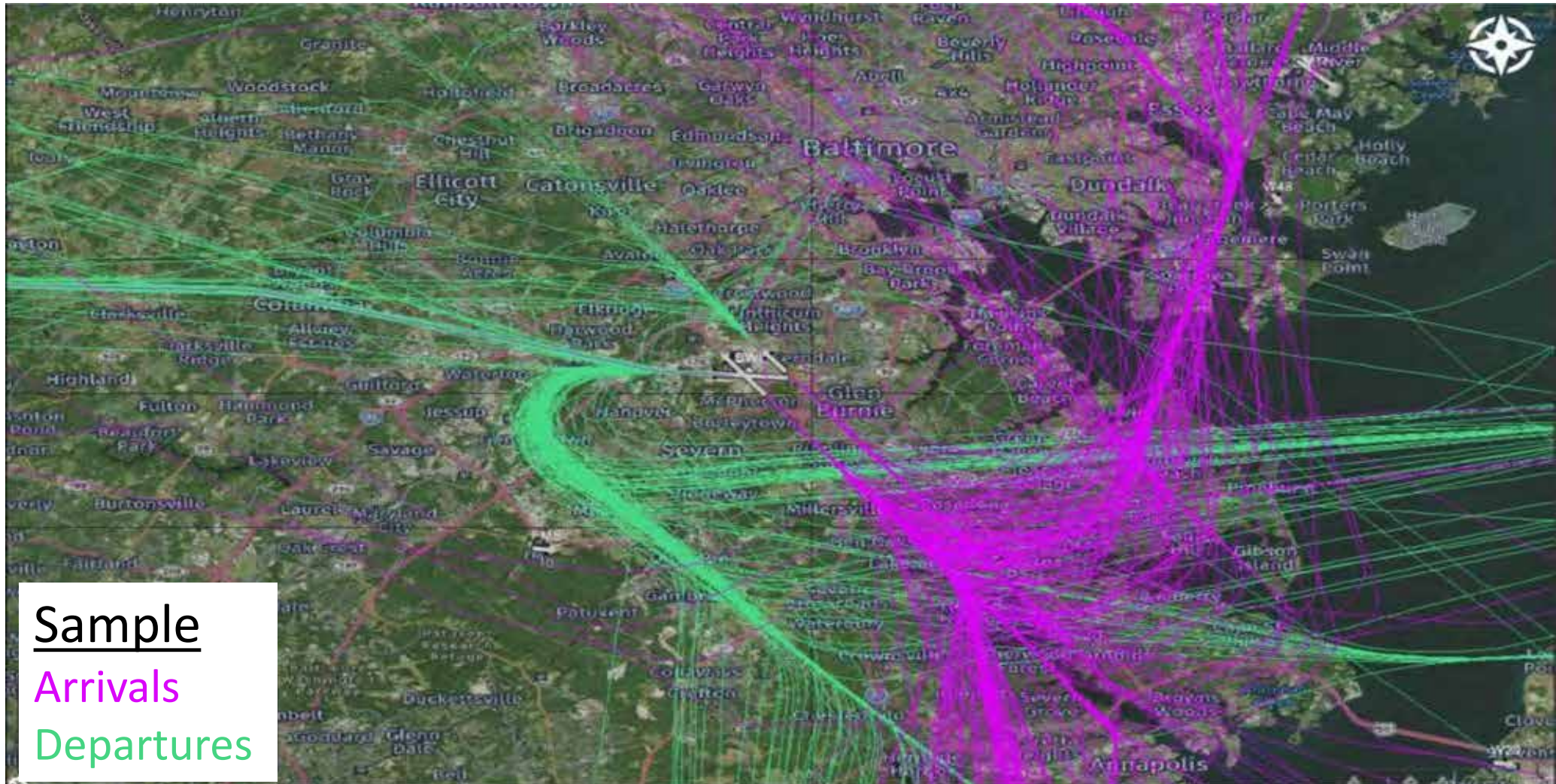
Prevailing wind speed, direction and weather factors determine the direction of air traffic flow from BWI Marshall airport. Aircraft usually take off and land into the wind to meet safety and operational requirements.

During **EAST FLOW** conditions (winds from the south or east), aircraft arrive and depart toward the east. This includes runways 15L, 15R, and 10.

During **WEST FLOW** conditions (winds from the north or west), aircraft arrive and depart toward the west. This includes runways 33L, 33R, and 28.

The next two pages illustrate a typical East Flow day and a typical West Flow day at the airport. Sample days were analyzed by Vianair and then depicted as all arrivals and departures consistent with a specific flow on a given day. While these flight patterns are typical. Patterns may vary based on operational conditions.

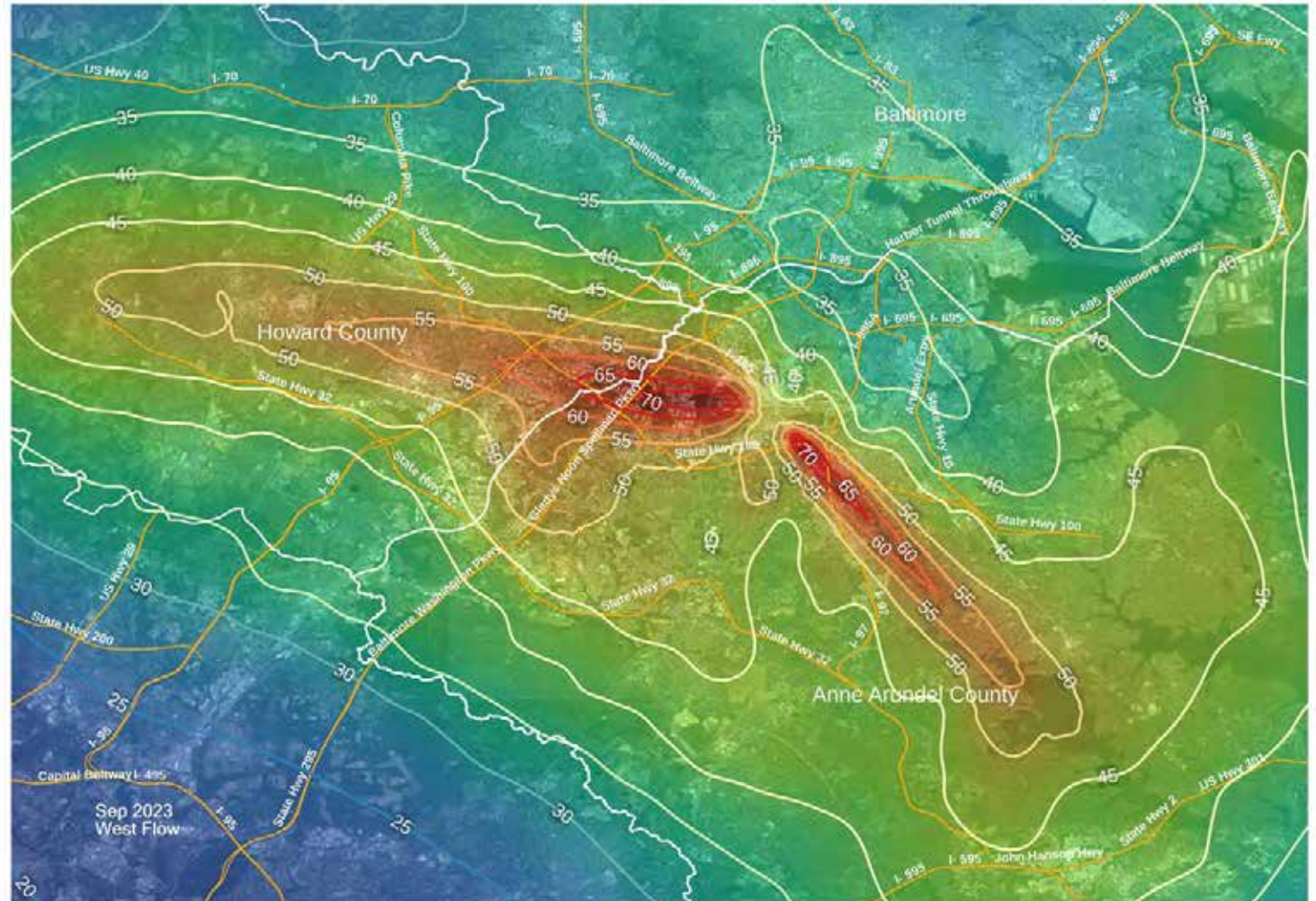
Visual representation of a typical day of traffic over the Baltimore region during West Flow operations at BWI-Marshall



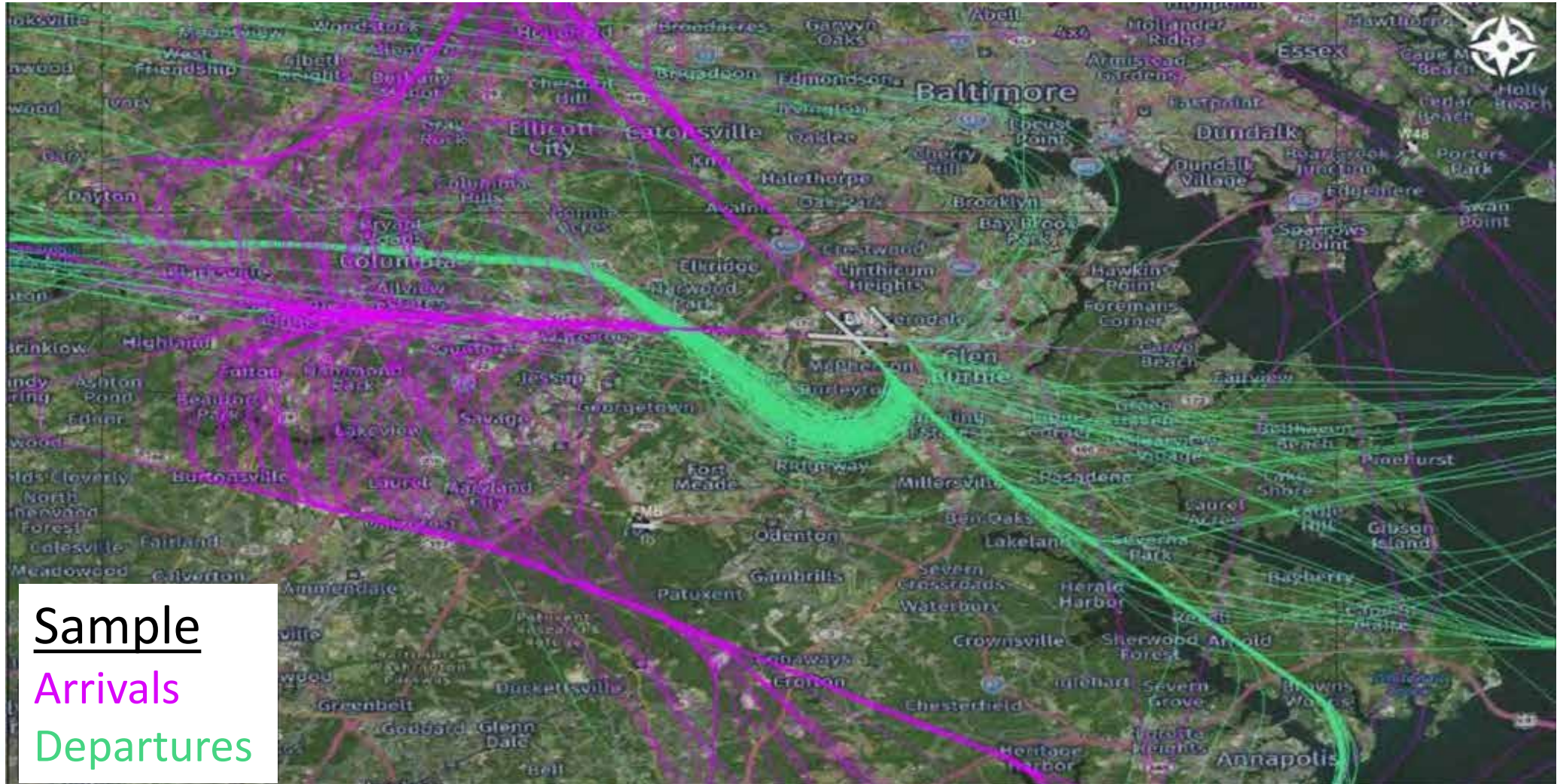
West Flow Operations – DNL Noise Exposure

West Flow: Arrivals Runway 33L & Departures Runway 28

Note: The DNL Map for KBWI East Flow is calculated for Arrivals to Runway 33L only, and Departures from Runway 28 only, over the entire month, which equals the sum of all time periods when the airport was in an East Flow and these specific runways were in use. Arrivals/Departures to/from other runways during this time period are excluded from this calculation.



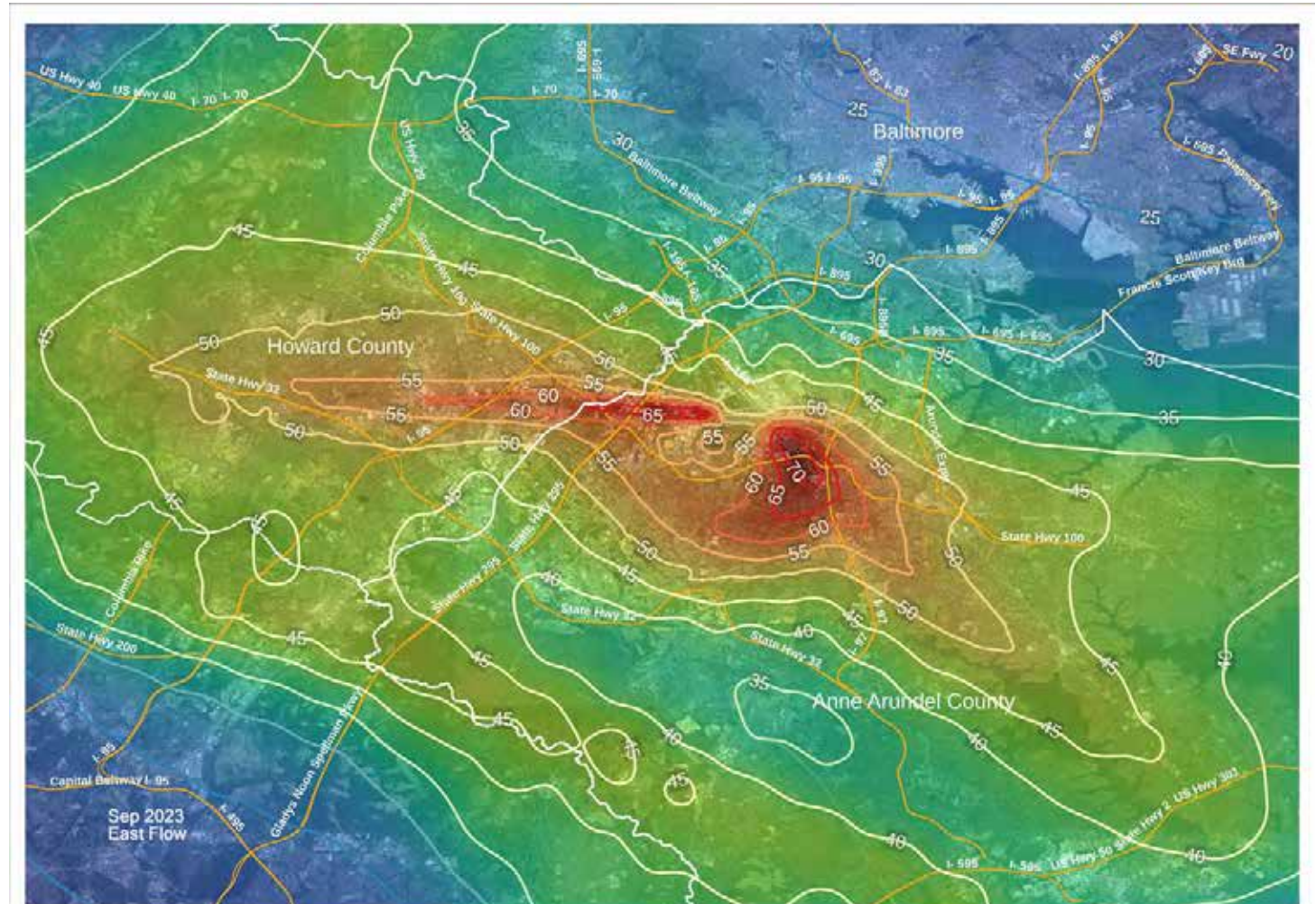
Visual representation of a typical day of traffic over the Baltimore region during East Flow operations at BWI-Marshall



East Flow Operations – DNL Noise Exposure

East Flow: Arrivals Runway 15R & Departures Runway 10

Note: The DNL Map for KBWI East Flow is calculated for Arrivals to Runway 15R only, and Departures from Runway 10 only, over the entire month, which equals the sum of all time periods when the airport was in an East Flow and these specific runways were in use. Arrivals/Departures to/from other runways during this time period are excluded from this calculation.



Monthly Noise Exposure – Anne Arundel County Landmark Locations

September 2023 – Both East and West Flow Operations

Name	Description	Number of Events Above 55dBA (Monthly)	Daily Average (Monthly)	Number of Events Above 55 dBA (YTD)	DNL (Monthly)
AAR_VNM1	RAVNN	0	0	137	12.92
AAR_VNM2	JETNA	3	0	245	21.01
AAR_VNM3	Arden on the Severn	5,041	168	43,808	55.41
AAR_VNM4	London Public House	1,255	42	13,089	37.26
AAR_VNM5	Annapolis Middle School	439	15	4,897	36.37
AAR_VNM6	West Annapolis Elementary	1,029	34	9,827	42.46
AAR_VNM7	Herald Harbor	1	0	97	15.71
AAR_VNM8	Eastport Terrace	495	17	4,779	36.24
AAR_VNM9	Truxton Park	487	16	5,488	37.98
AAR_VNM10	Shipleys Choice Elementary	6,361	212	56,227	57.47
AAR_VNM11	Robinwood	388	13	4,270	34.57
AAR_VNM12	Wordour Bluffs	1,046	35	9,671	41.36
AAR_VNM13	Millersville Elementary School	598	20	6,630	40.92
AAR_VNM14	Sherwood Forest	1,942	65	16,263	47.03
AAR_VNM15	Brookeville, Montgomery County	40	1	286	28.7
AAR_VNM16	Rolling Knolls	1,651	55	17,208	44.99
AAR_VNM17	Maryland State House	776	26	7,565	40.15
AAR_VNM18	I-97 and MD 178 Crownsville	286	10	4,407	41.96

This table shows the noise pollution metrics at the “Landmark” locations identified by the Roundtable for Anne Arundel County, which primarily experiences arrivals to the airport.

Locations closest to the airport and/or concentrated flight corridors many miles away from the airport will typically see the highest noise exposure. For instance, **West Annapolis Elementary School (WAES)** is approximately 23.4 miles from the end of Runway 33L, the dominant runway for arrivals. Yet, the DNL is over 36, there were an average of 34 flight per day over 55 decibels (**9,827 such flights year-to-date in 2023**).

Monthly Noise Exposure – Howard County Landmark Locations

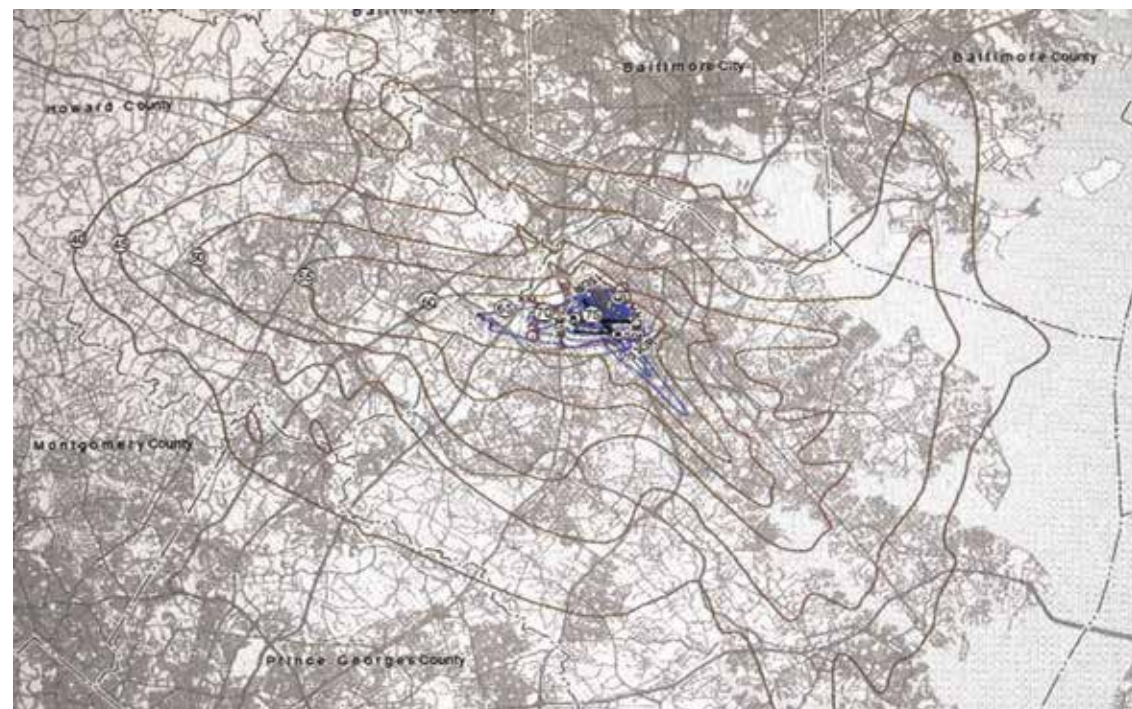
September 2023 – Both East and West Flow Operations

Name	Description	Number of Events Above 55dBA (Monthly)	Daily Average (Monthly)	Number of Events Above 55 dBA (YTD)	DNL (Monthly)
HOCO_VNM1	Howard Square Apartments	9,440	315	82,404	54.78
HOCO_VNM2	HCPSS Administration Campus	4,476	149	39,256	48.75
HOCO_VNM3	Centennial Park	2,423	81	26,087	47.04
HOCO_VNM4	HoCo General Hospital	5,836	195	50,331	52.51
HOCO_VNM5	Merriweather Post Pavillion	6,015	201	52,704	53.66
HOCO_VNM6	Oakland Mills HS	6,116	204	54,035	54.74
HOCO_VNM7	Long Reach HS	6,079	203	54,135	55.53
HOCO_VNM8	Troy Park	7,170	239	65,194	58.79
HOCO_VNM9	Harwood Park N'hood	7,118	237	65,662	57.36
HOCO_VNM10	Abiding Savior Lutheran	5,745	192	48,239	50.74
HOCO_VNM11	Tridelphia Ridge ES	319	11	1,870	38.61
HOCO_VNM12	Atholton HS	4,648	155	39,991	53.34
HOCO_VNM13	Christ Church Episcopal	7,205	240	61,053	56.28
HOCO_VNM14	Mayfield Woods MS	6,184	206	55,308	58.44
HOCO_VNM15	Manor Woods ES	255	9	1,936	39.29
HOCO_VNM16	Gateway Site	7,483	249	64,170	56.83
HOCO_VNM17	Oxford Square Neighborhood	11,234	374	97,035	65.05
HOCO_VNM18	St. Louis Catholic	3,680	123	29,407	48.46

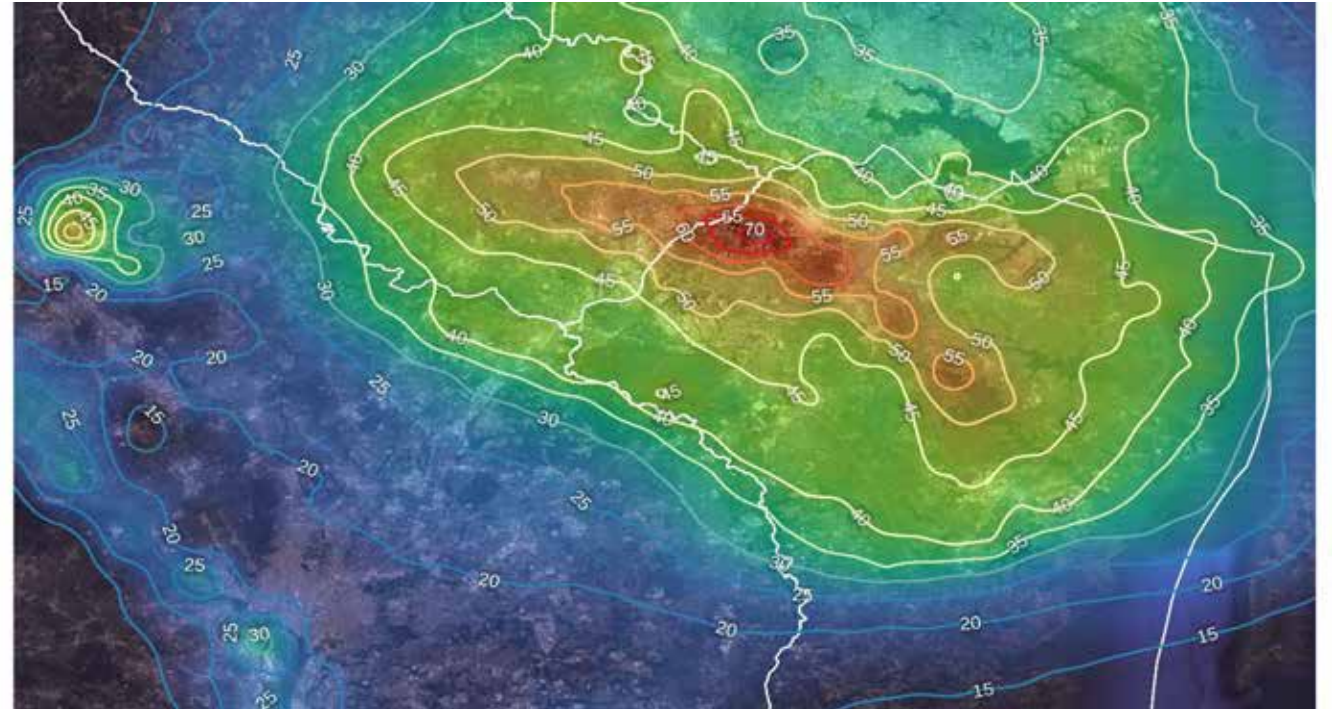
This table shows the noise pollution metrics at the “Landmark” locations identified by the Roundtable for Howard County, which primarily experiences departures from the airport.

Due to the high level of thrust required for take-offs, Howard County noise metrics are generally quite high, especially under concentrated flight corridors. For instance, **Oakland Mills High School (OMHS)** is approximately 8.3 miles from the end of Runway 28, the dominant runway for departures. Yet, the DNL is over 54 and there were an average of 204 flight per day over 55 decibels (**54,035 such flights year-to-date in 2023**).

REGIONAL MAPS OF BWI-MARSHALL NOISE POLLUTION



MAA modeled *actual historical* flights projected for the 2020 Airport Noise Zone and updated in Aug 2022 for a report to the Maryland General Assembly

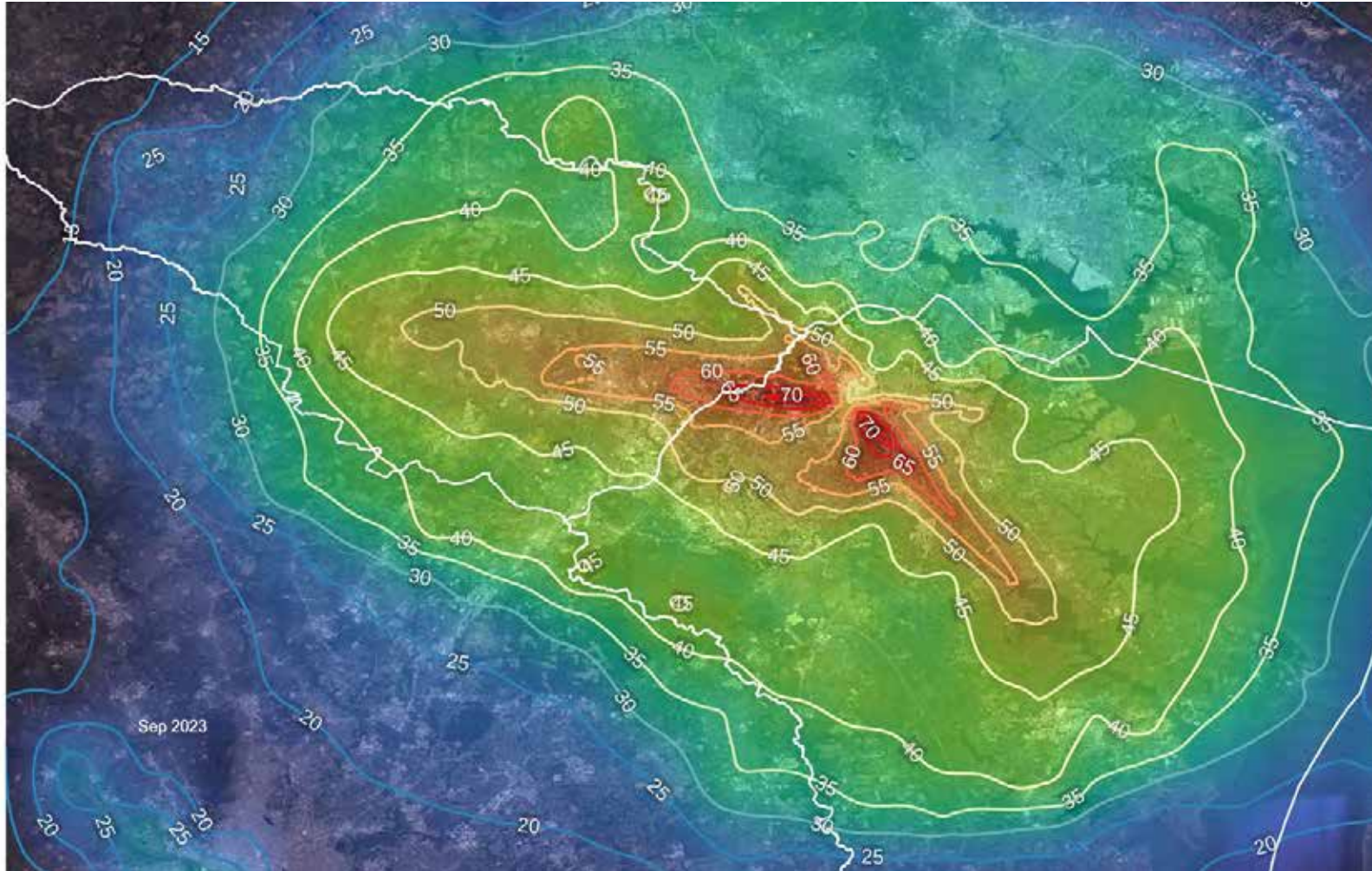


Vianair, Inc. modeled *actual daily* flights for February 2023 for the Monthly Aircraft Operations and Noise Exposure Report of the DC Metroplex BWI Community Roundtable

These images represent two versions of the mapped regional noise pollution generated by commercial flight operations at BWI-Marshall. The map on the left was generated by MDOT-MAA based on actual **historical** operations collected by the MDOT MAA's Airport Noise and Operations Monitoring System (ANOMS) with computer modeling of future expected noise. It is focused on the 65 DNL contour of the Airport Noise Zone. The Vianair-generated map on the right is based on **actual daily flights** from the airport with computer modeling of the resulting expected noise, creating a more in-depth look at all DNL noise contours.

Noise Exposure – DNL Contours

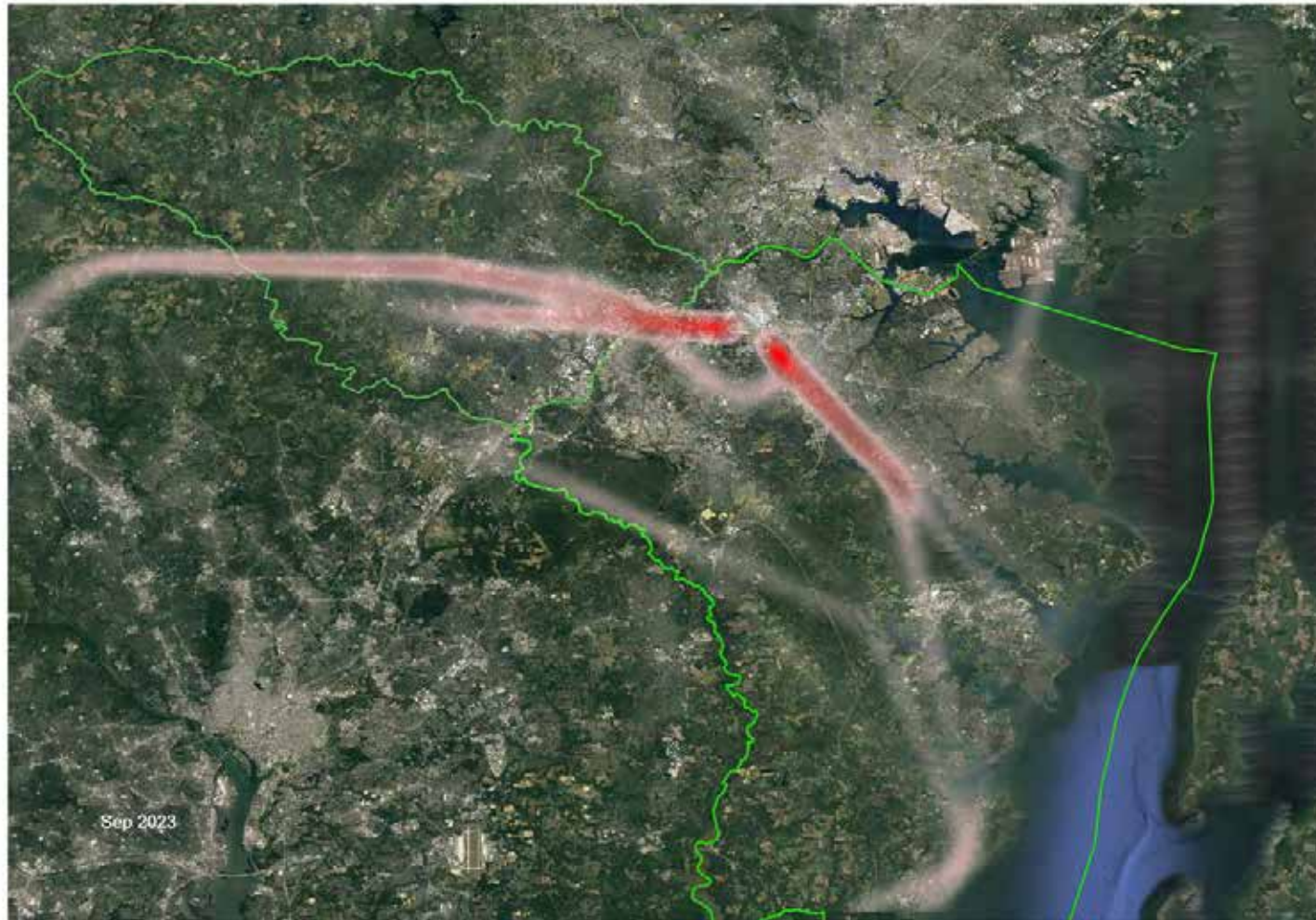
Howard and Anne Arundel Counties



In this Vianair-generated map, noise is expressed in DNL contours. For reference, the **50 DNL** contour stretches westward to encompass the approximate boundaries of **Columbia/Clarksville**, eastward to **Fort Smallwood/Lake Shore/Annapolis** and south to **Crownsville /Millersville/Fort Meade**.

The WHO has identified adverse health effects at this noise level.

Flight Track Density – Heat Map of Anne Arundel and Howard Counties



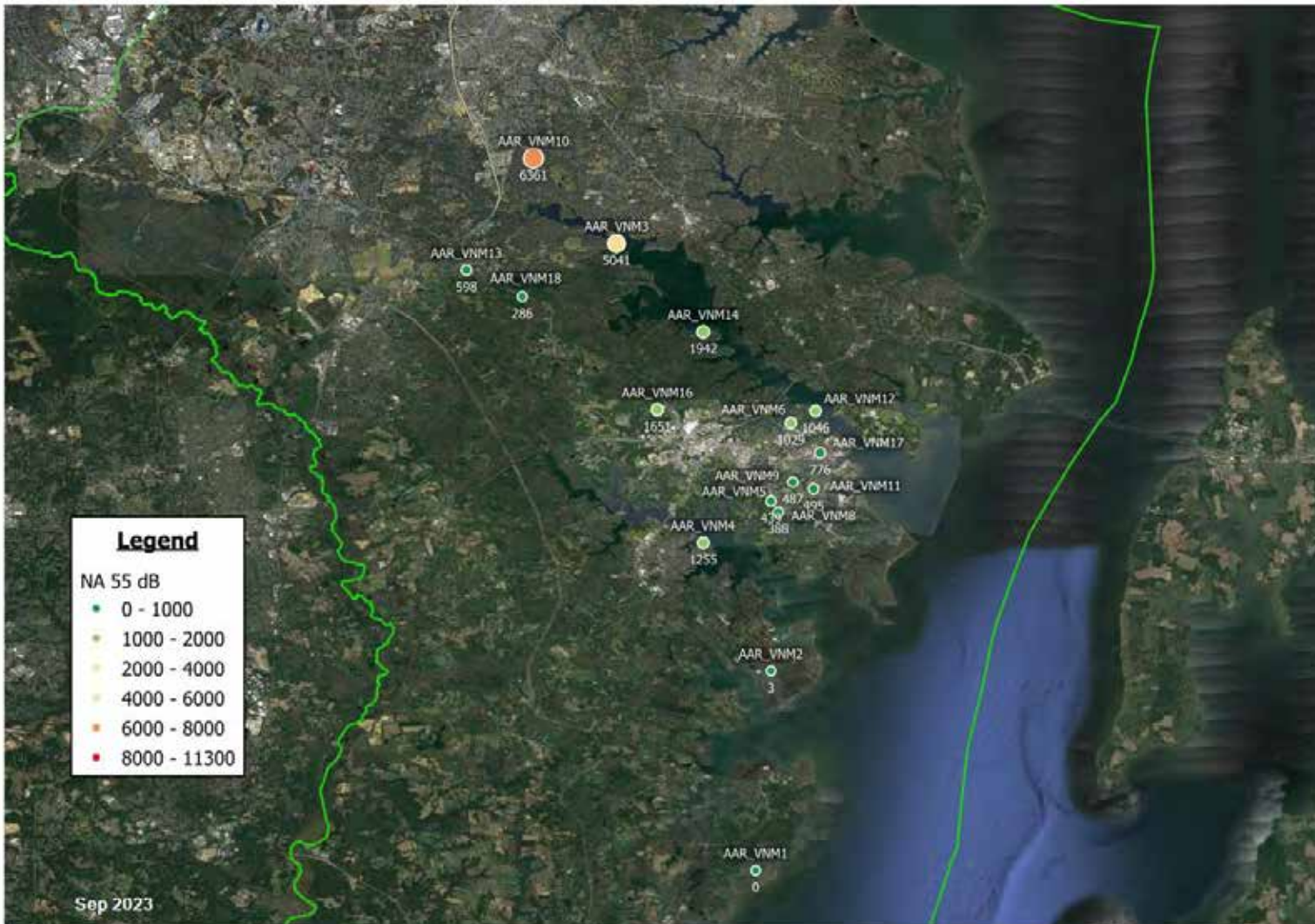
Flight track density analyzes the concentrations of flight activity in and out of BWI. Flight track density is calculated based on reviewing all flights for the month, then analyzing the concentration of flights within the study area. Concentration (or density) is then depicted using color. Red represents the highest density, fading to white as density lowers.

Noise Exposure – Number of Events Above 55 dBA

Anne Arundel County - Landmark Locations Only

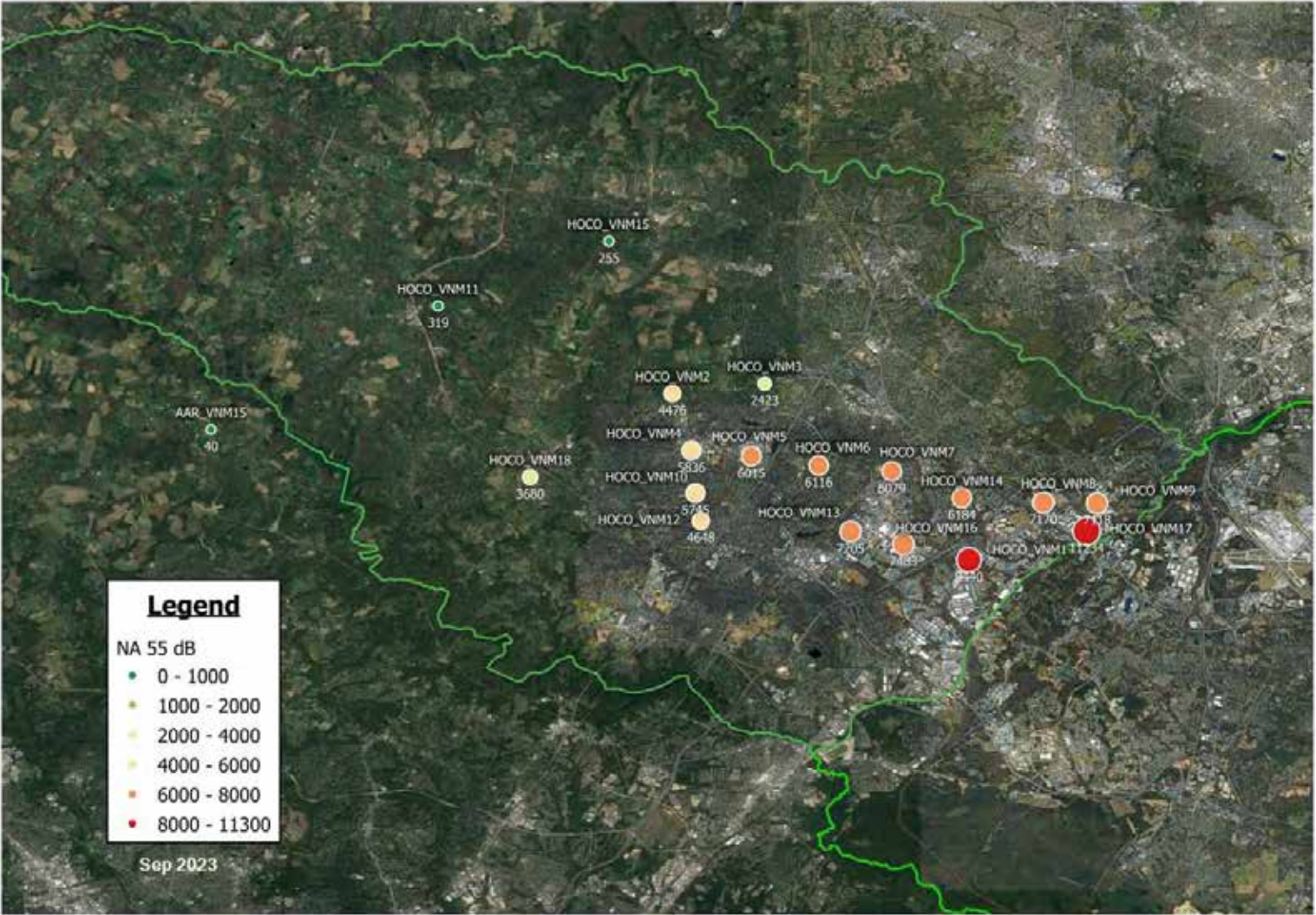
This map shows the Number of Events (single flights) at the local Landmarks during the month above the 55 decibel Threshold (NAT) for Anne Arundel County.

Note that the Annapolis peninsula and other communities along the Severn River experience many events above threshold.



Noise Exposure – Number of Events Above 55 dBA

Howard County - Landmark Locations Only

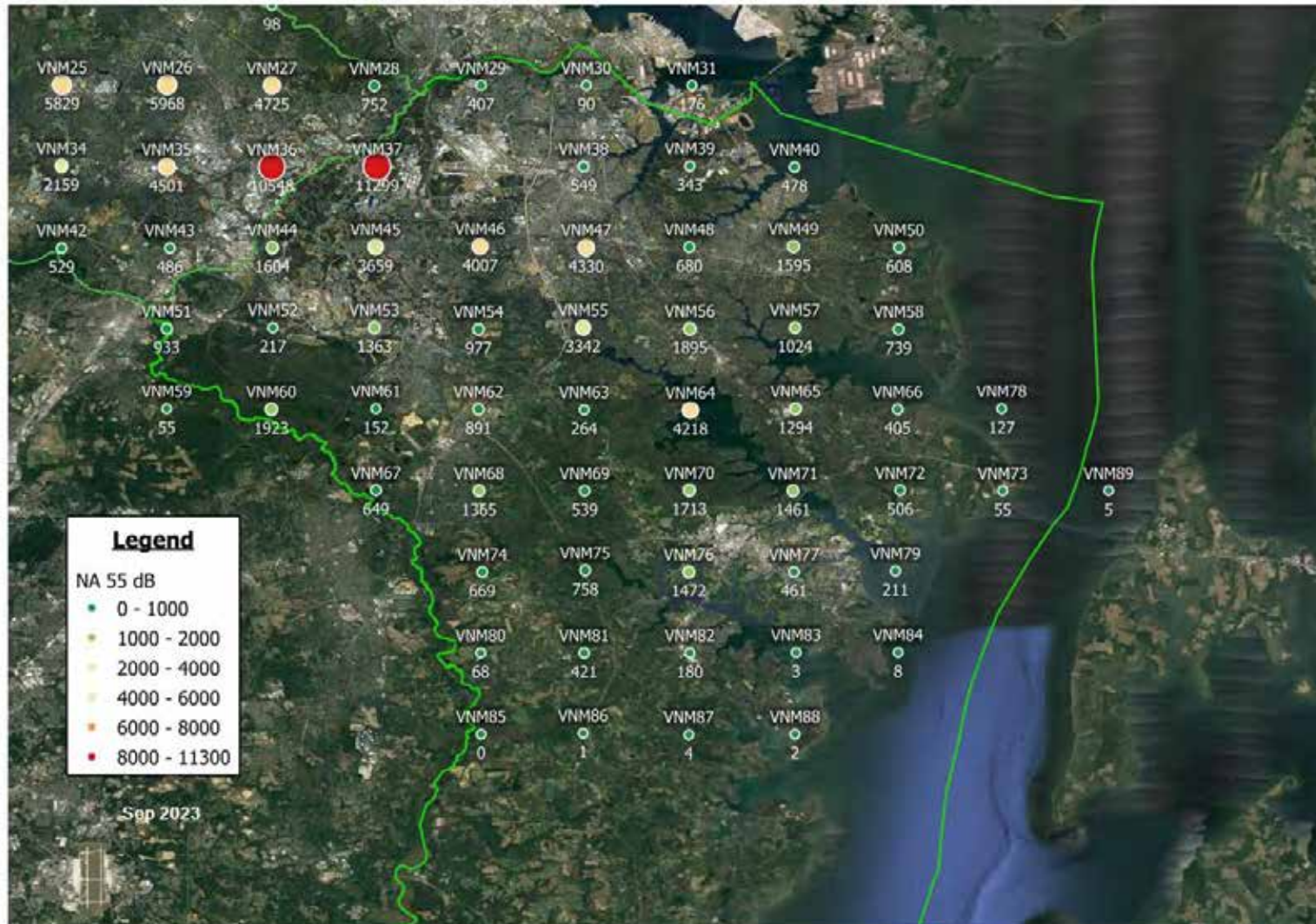


This map shows the Number of Events (single flights) at the local Landmarks during the month above the 55 decibel Threshold (NAT) for Howard County.

Note that while highly significant noise pollution extends to St. Louis Catholic School in Clarksville (HOCO_VNM18), areas as far west as Tridelphia Ridge Elementary School (HOCO_VNM11) also experienced many events above threshold.

Noise Exposure – Number of Events Above 55 dBA

Anne Arundel County – Full Virtual Noise Monitor Grid

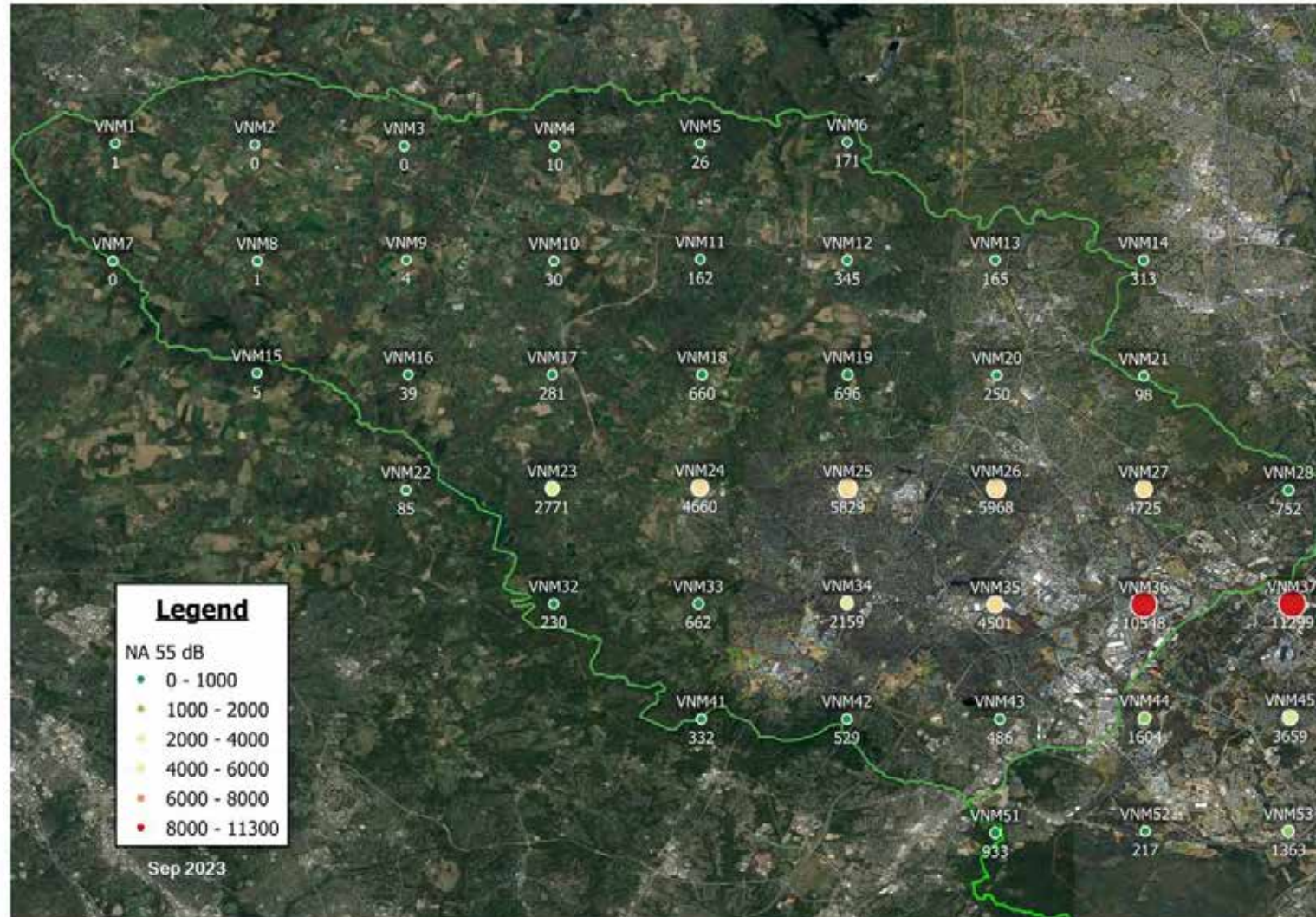


This map shows the Number of Events (single flights) during the month above the 55 decibel Threshold (NAT) for the total grid of Virtual Noise Monitors in Anne Arundel County.

For individuals who wish to use this map to gauge the NAT for their location of interest (home, school, hospital, etc.) there will be noticeable differences in noise pollution between each Virtual Noise Monitor.

Noise Exposure – Number of Events Above 55 dBA

Howard County – Full Virtual Noise Monitor Grid



This map shows the Number of Events (single flights) during the month above the 55 decibel Threshold (NAT) for the total grid of Virtual Noise Monitors in Howard County.

For individuals who wish to use this map to gauge the NAT for their location of interest (home, school, hospital, etc.) there will be noticeable differences in noise pollution between each Virtual Noise Monitor.

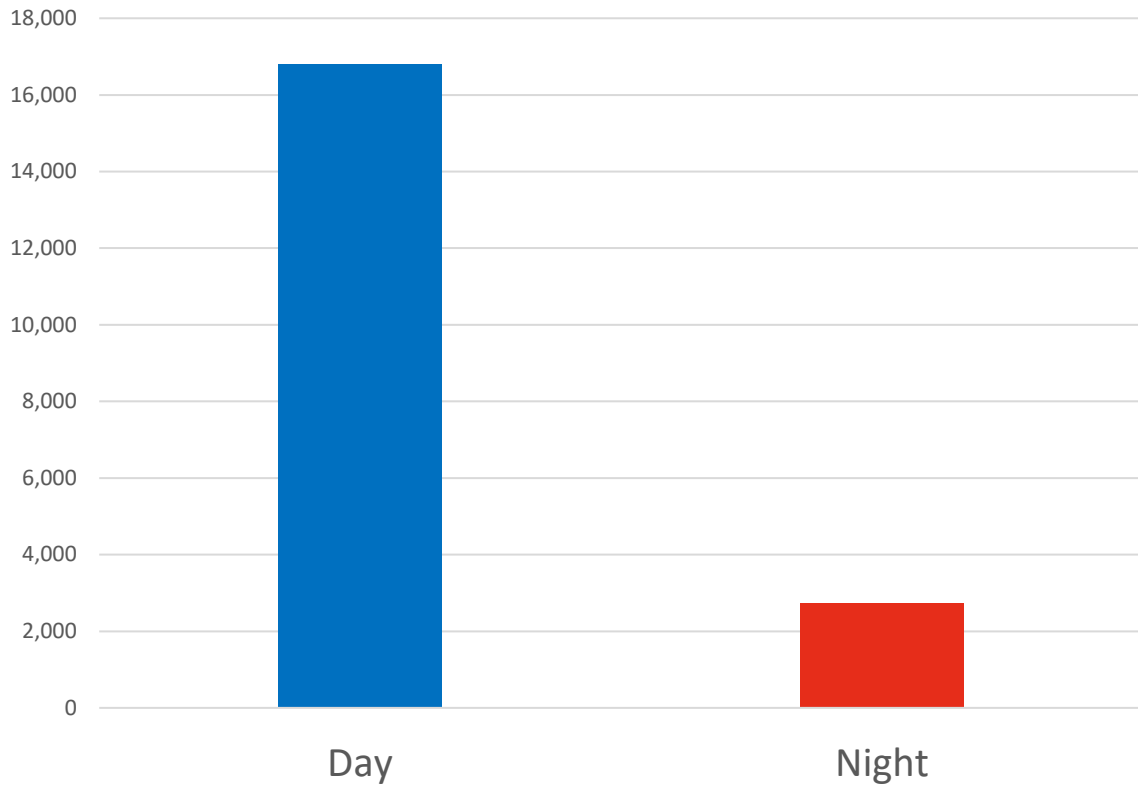
Noise Exposure – Full Virtual Noise Monitor Grid, All Operational Flows

Name	Number-of-Events-Above 55dBA (Total)	Daily Average	DNL	Name	Number-of-Events-Above 55dBA (Total)	Daily Average	DNL	Name	Number-of-Events-Above 55dBA (Total)	Daily Average	DNL
VNM1	1	0	11.84	VNM31	176	6	38.25	VNM61	152	5	40.34
VNM2	0	0	15.15	VNM32	230	8	38.46	VNM62	891	30	42.59
VNM3	0	0	19.04	VNM33	662	22	45.1	VNM63	264	9	42.01
VNM4	10	0	29.82	VNM34	2,159	72	48.91	VNM64	4,218	141	51.16
VNM5	26	1	33.81	VNM35	4,501	150	51.73	VNM65	1,294	43	45.5
VNM6	171	6	38.59	VNM36	10,548	352	56.86	VNM66	405	14	40.5
VNM7	0	0	12.21	VNM37	11,299	377	69.07	VNM67	649	22	40.48
VNM8	1	0	21.83	VNM38	549	18	47.76	VNM68	1,365	46	42.55
VNM9	4	0	23.76	VNM39	343	11	42.01	VNM69	539	18	41.61
VNM10	30	1	31.95	VNM40	478	16	41.51	VNM70	1,713	57	45.97
VNM11	162	5	37.94	VNM41	332	11	40.29	VNM71	1,461	49	43.4
VNM12	345	12	38.91	VNM42	529	18	42.68	VNM72	506	17	38.06
VNM13	165	6	38.03	VNM43	486	16	43.58	VNM73	55	2	30.04
VNM14	313	10	41.04	VNM44	1,604	53	48.83	VNM74	669	22	38.35
VNM15	5	0	21.76	VNM45	3,659	122	51.77	VNM75	758	25	41.27
VNM16	39	1	29.77	VNM46	4,007	134	61.16	VNM76	1,472	49	42.34
VNM17	281	9	38	VNM47	4,330	144	52.71	VNM77	461	15	38.25
VNM18	660	22	43.43	VNM48	680	23	45.57	VNM78	127	4	32.99
VNM19	696	23	43.26	VNM49	1,595	53	46.32	VNM79	211	7	31.54
VNM20	250	8	40.97	VNM50	608	20	41.31	VNM80	68	2	32.55
VNM21	98	3	39.57	VNM51	933	31	43.21	VNM81	421	14	34.54
VNM22	85	3	30.78	VNM52	217	7	40.65	VNM82	180	6	32.06
VNM23	2,771	92	43.09	VNM53	1,363	45	46.53	VNM83	3	0	25.36
VNM24	4,660	155	50.02	VNM54	977	33	43.84	VNM84	8	0	23.74
VNM25	5,829	194	52.46	VNM55	3,342	111	49.6	VNM85	0	0	20.42
VNM26	5,968	199	52.76	VNM56	1,895	63	48.46	VNM86	1	0	20.54
VNM27	4,725	158	49.65	VNM57	1,024	34	45.45	VNM87	4	0	20.63
VNM28	752	25	48.15	VNM58	739	25	42.94	VNM88	2	0	19.91
VNM29	407	14	43.27	VNM59	55	2	36.38	VNM89	5	0	22.04
VNM30	90	3	37.32	VNM60	1,923	64	44.93				

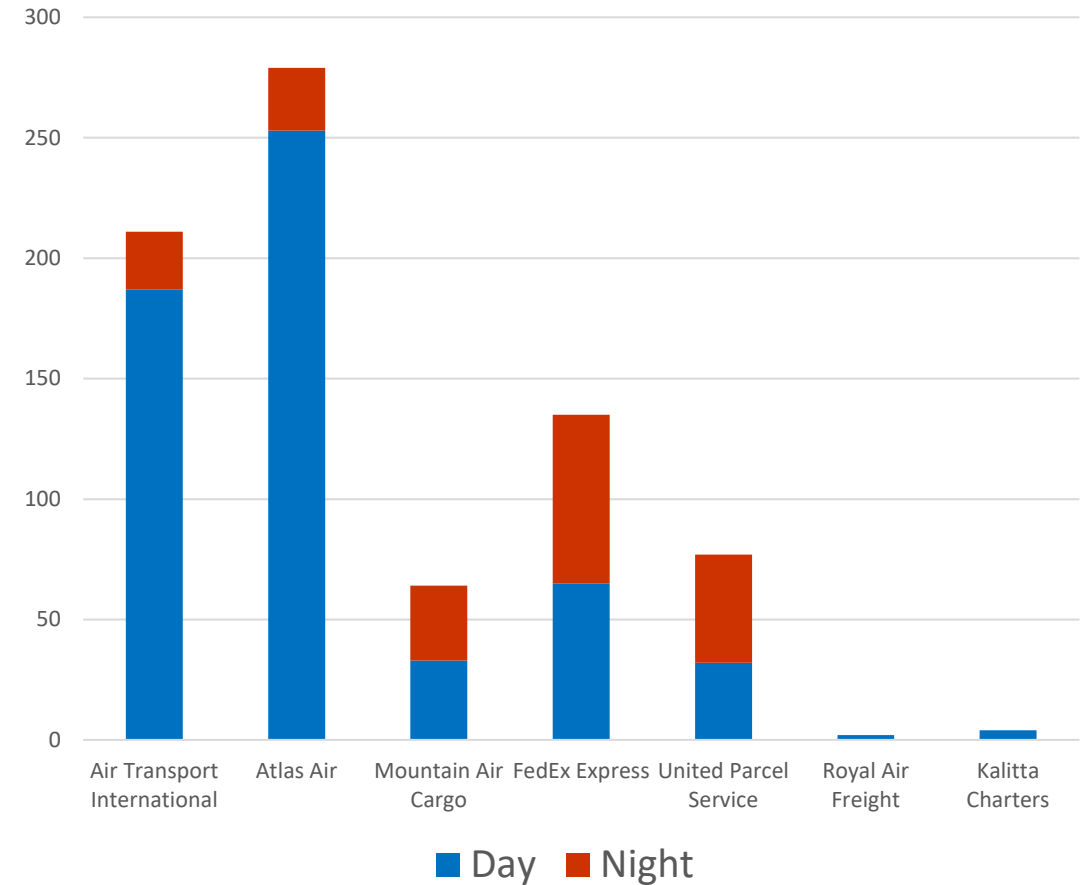
Monthly Operations – Daytime versus Nighttime

September 2023

Monthly Operations - Day vs. Night



Cargo Operations – Daytime vs. Nighttime

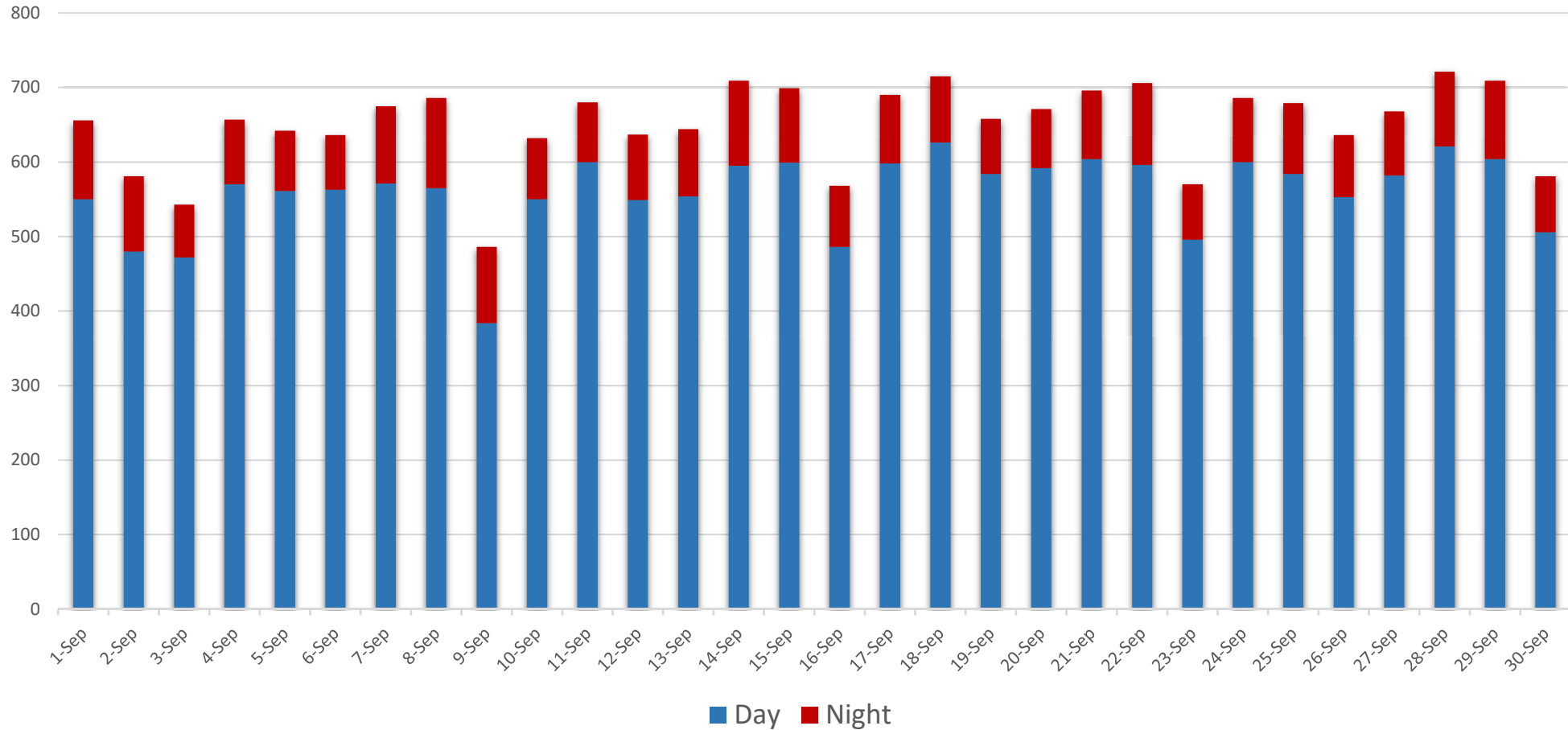


RED represents Nighttime flights. "Nighttime Hours" are from 10PM - 7AM

Monthly Operations

September 2023

Daily Operations (Day vs. Night)

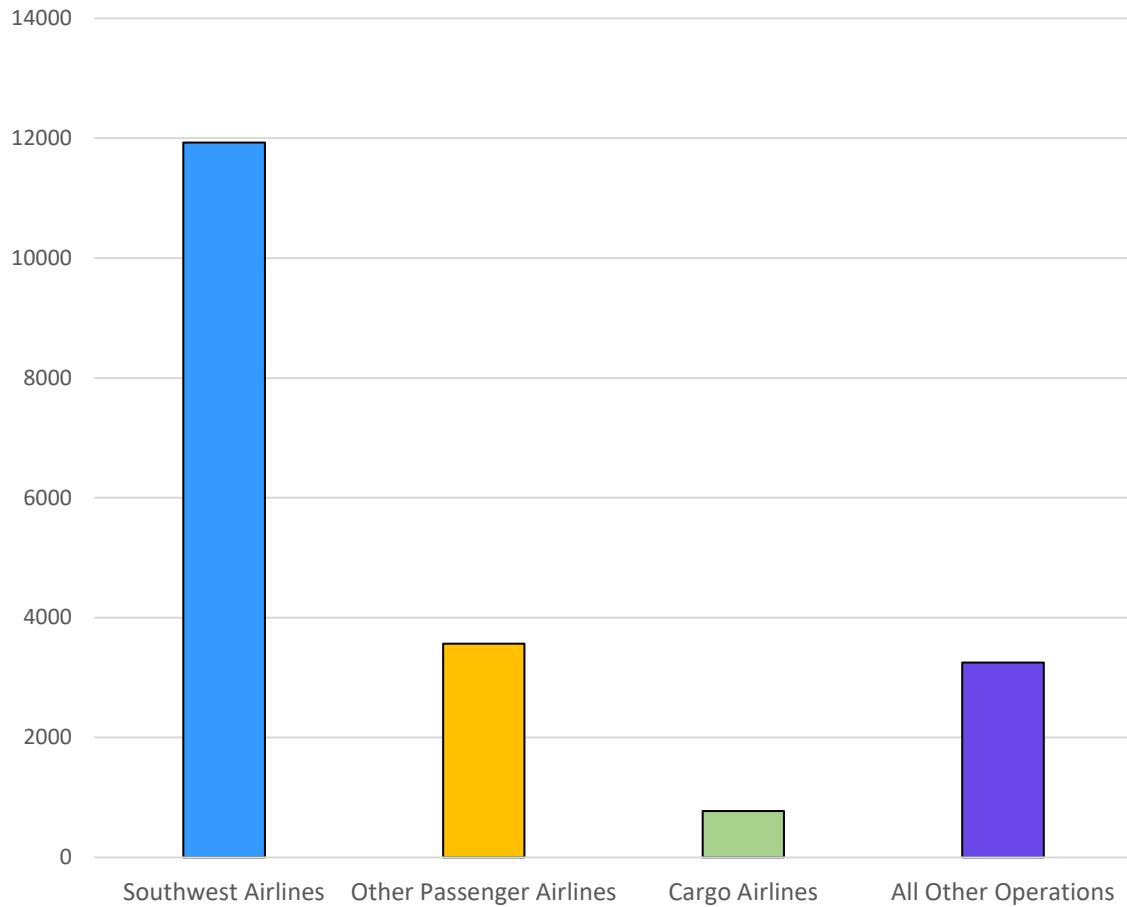


RED represents Nighttime flights. "Nighttime Hours" are from 10PM - 7AM

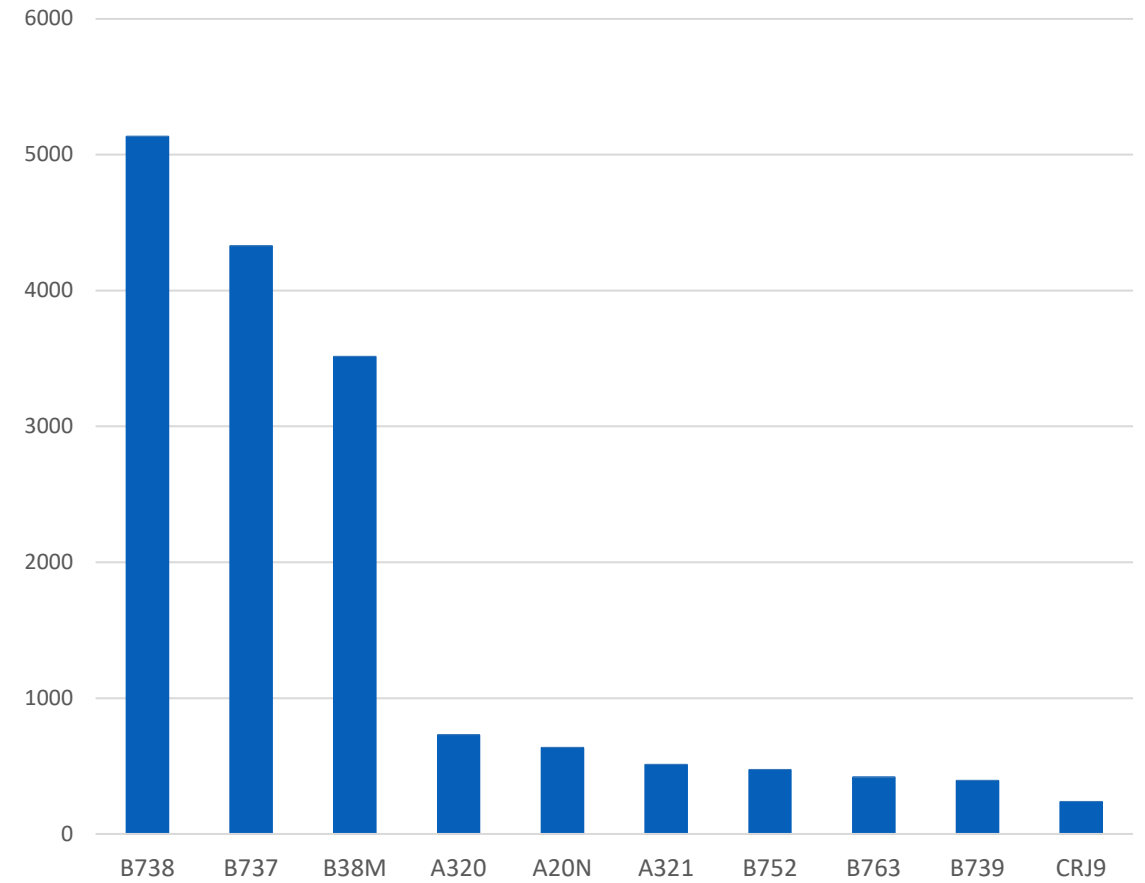
Aircraft Operations

September 2023

Southwest vs. All Other Operations



Total Operations by Aircraft Type (Top 10 Aircraft)





Aircraft Noise Basics

Noise is defined as “unwanted sound.” There are many ways to measure noise. Two common metrics will be used in these reports: Day-Night Level (DNL) and Number-of-Events-Above (NA).

DNL is the standard metric used by the Federal Aviation Administration as required by federal regulation. Federal guidelines recommend **DNL 65** as the level of aircraft noise exposure that is incompatible with noise-sensitive applications including residential development. A problem with DNL is it is difficult for the public to understand and doesn't seem to reflect what residents experience on a daily basis.

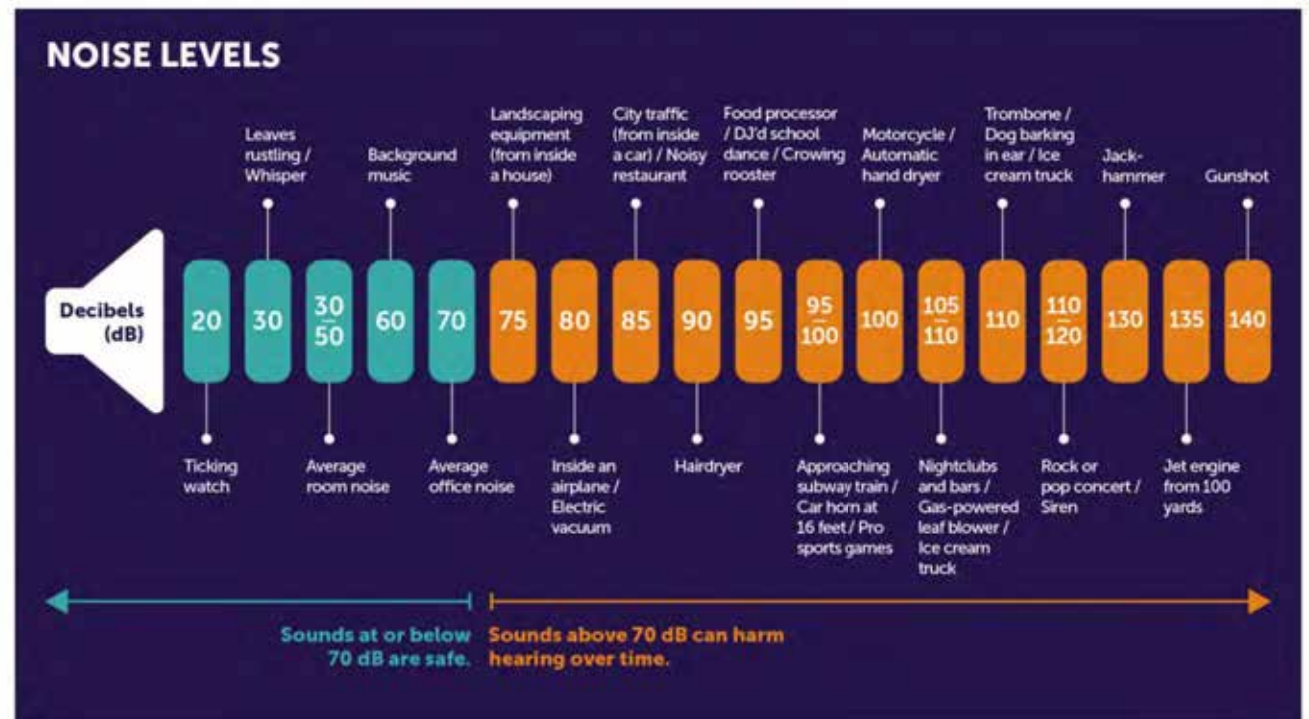
The NA noise metric counts the number of times the noise level exceeds a specific threshold. In this report, the Number-of-Events-Above 55 metric (NA55) is calculated. NA55 quantifies the number of aircraft events resulting in noise exposure of 55 decibels or higher at each location depicted.

Noise Basics

The scale below is intended to provide a basic understand of noise levels which are expressed in A-weighted decibels (dB or dBA). The purpose of the chart is to provide examples of noise/sound level associated with common events. This is intended to provide the reader with a basic understanding or context of “how loud” 55, 65, 75, etc., decibels is.



It is worth noting that noise (sound) exposure and noise annoyance are different. Noise exposure is based on acoustics and represents a measure of sound energy a person is exposed to. Sound exposure at a specific level (i.e. 65 db) may be perceived differently based on the source of the noise (i.e. music at 65 decibels vs. aircraft noise at 65 decibels). The source of the sound and the individual’s perception of the source is one of the many factors that contribute to our reaction.

Annoyance (annoyed, highly annoyed, not annoyed, etc.) is based on an individual’s multi-factored response to noise exposure and varies by individual. However, aircraft noise consistently generates greater levels of high annoyance among surveyed populations than other types of transportation noise. **Of note for this report, high noise annoyance has been scientifically associated with disease.**



Why the DNL metric is controversial

In September 2021, the General Accounting Office of the United States Government (GAO) published a review of the FAA's implementation of the precision flight path component of NextGen, which is called Performance Based Navigation (PBN). That analysis showed that because DNL combines the effects of several components of noise into a single metric, it does not provide a clear picture of the flight activity or associated noise levels at a given location. For example, 100 flights per day can yield the same DNL as one flight per day at a higher decibel level, due to the averaging effect of FAA's metric.

Flights per day, by decibel (dB) level	Day-Night Average Sound Level
1 flight per day at 114.4 dB 	65 dB
100 flights per day at 94.4 dB 	65 dB

Note: For more details, see fig. 1 in GAO-22-105844.

Source: GAO analysis of Federal Aviation Administration information. | GAO-22-105844

The GAO's analysis and other research demonstrate the limitations of FAA relying solely on DNL to identify potential noise problems. This illustrates why communities often view DNL as a "permissive" measure, designed to allow increased airplane operations.



For More Information

For more information about the contents of this report or
for questions about the DC Metroplex BWI Community Roundtable

Please Visit:

<https://marylandaviation.com/environmental/environmental-compliance-sustainability/dc-metroplex-bwi-community-roundtable/>