



2023

ANNUAL COMMUNITY REPORT

MARYLAND AVIATION ADMINISTRATION

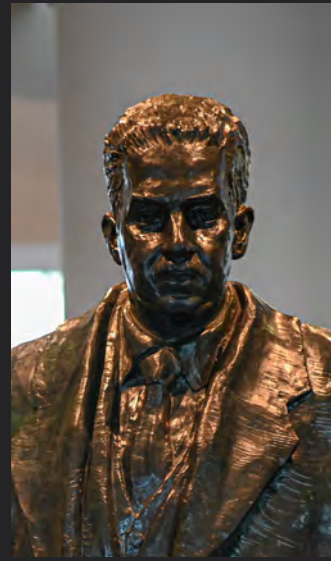
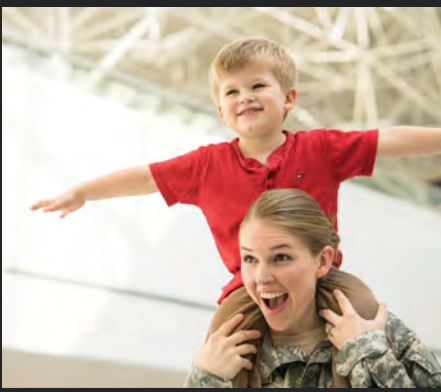
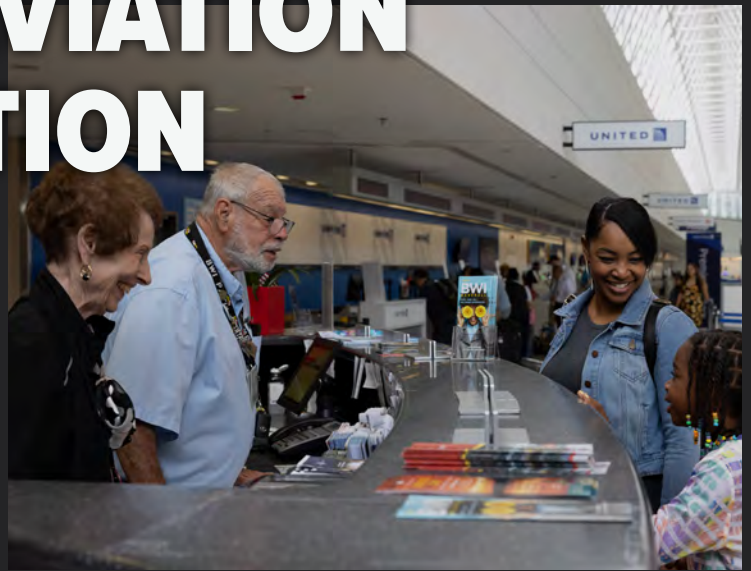
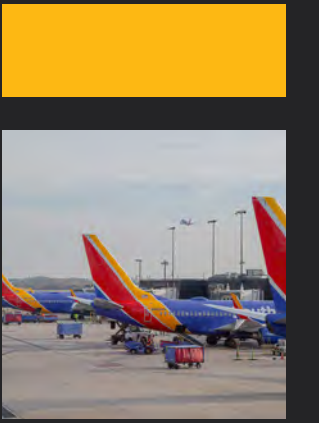


TABLE OF CONTENTS

01	Leadership Messages
03	New Leaders Join the MAA
04	Maryland Aviation Administration
05	MAA's Strategic Plan & Goals
06	Baltimore/Washington International Thurgood Marshall Airport
07	Air Service Highlights
08	BWI Marshall Enhancements
09	Upcoming Construction Projects for BWI Marshall Airport
11	Outstanding Business Awards & Community Engagement
13	Corporate Social Responsibility
14	MAA's Military Support
15	Business Outreach
18	Commitment to Youth
19	Environmental Stewardship
21	Martin State Airport
22	Upcoming Construction Project for Martin State Airport
23	BWI Marshall Airport Economic Impact
24	Martin State Airport Economic Impact
25	Financial Results
27	Summary
28	Maryland Aviation Commission

LEADERSHIP MESSAGES



Our administration is leading the way to implement equitable transportation solutions that drive economic growth in Maryland and connect our residents with countless opportunities. Our transportation priorities strongly emphasize our pledge to social equity, environmental protection and sustainable communities.

As part of that commitment, we know that the Maryland aviation system is a catalyst for connecting communities, growing our economy, fostering cultural exchange, and promoting tourism. Our airports create jobs and support the vibrant exchange of ideas and enterprise. BWI Thurgood Marshall Airport and our state's air transport hubs support economic development and bring our residents and businesses into the international economy.

I am grateful to the Maryland Aviation Administration for leading a dynamic aviation system that strengthens our ties across the nation and around the world.

WES MOORE
GOVERNOR



The Maryland Department of Transportation is leading efforts to create and maintain a robust, multimodal transportation system that meets the needs of all Marylanders. A strong, safe, and sustainable statewide aviation system is a critical part of that overall statewide transportation network.

BWI Thurgood Marshall Airport serves residents from across Maryland, along with travelers from around the country and the world. We have worked diligently to ensure that BWI Marshall Airport leads as a hub of connectivity, efficiency, and sustainability.

Thank you to the entire Maryland Aviation Administration team, whose dedication and expertise are the driving forces behind our accomplishments. I also want to acknowledge and express appreciation to our customers, partners, and local communities for their continued trust and collaboration.

PAUL J. WIEDEFELD
SECRETARY, MARYLAND DEPARTMENT OF TRANSPORTATION



To our community,

The Maryland Aviation Administration has a steadfast commitment to providing outstanding aviation services and world-class travel experiences, while contributing to the strength and prosperity of our local communities.

As a community partner, we are continuously exploring new ways to enhance our community, environment, military, and youth involvement. We value input and collaboration with neighbors, community leaders, and organizations to ensure that our initiatives align with the needs of the people we serve.

This report highlights many exciting programs and projects taking place at Baltimore/Washington International Thurgood Marshall Airport and Martin State Airport that help create sustainable, positive relationships with our neighbors and stakeholders. We look forward to additional collaboration and engagement with these partners.

I remain proud of the good work we are doing at the MAA to serve our local thriving communities, while playing a leading role in supporting the strength and well-being of the state and region.

RICKY D. SMITH, SR.
EXECUTIVE DIRECTOR/CEO
MARYLAND AVIATION ADMINISTRATION



The Thurgood Marshall exhibit, at Checkpoint C pre-security, honors one of the country's foremost leaders in the struggle for equal rights under the law.

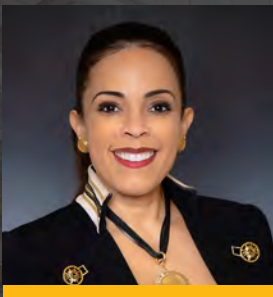
NEW LEADERS JOIN THE MAA



In July, two new leaders were appointed to the Maryland Aviation Administration's executive team. Ms. Keiva Rodriques was appointed Chief Operating Officer for the MAA, and Ms. Diana Léon Brown was named Chief of Staff. These senior leaders bring significant knowledge and experience that align with the MAA's commitment to excellence, innovation, and service.

"We are thrilled to welcome Keiva and Diana to our executive team," said Ricky Smith, Executive Director/CEO of the MAA. "Their proven leadership will play a vital role in the continued growth and success of our airports. We look forward to their work on behalf of our customers and their valuable contributions in shaping the future of the MAA."

As Chief Operating Officer, Keiva Rodriques is responsible for providing guidance and management for internal affairs related to the MAA. Ms. Rodriques is a seasoned management and engineering professional with more than 20 years of experience in government and the private sector. Since 2019, she served as the MAA's Deputy Chief Engineer in the Division of Planning and Engineering. In that role, she oversaw the management of \$1.5 billion in capital programs and projects at BWI Marshall and Martin State Airports.



In the Chief of Staff role, Diana Léon Brown is responsible for guiding the MAA's external and government affairs. Ms. Brown is an executive with more than 20 years of experience in strategic partnerships, advocacy, external relations, and program management, with a proven ability to create and maintain strong relationships with government and private-sector organizations. Her career includes service as Director of Strategic Partnerships for the Office of Prince George's County Executive, Senior Administrative Officer with Broward County Board of County Commissioners, and Executive Director for the Artem Leadership Institute. She serves on the Board of the Congressional Award Foundation, the Greater Washington Board of Trade, Vital Voices, and the Pull up Fund.

COMMUNITY ENGAGEMENT AND PARTNERSHIPS

Whether you're traveling or just visiting BWI Marshall Airport to enjoy the airport's experience of retail shopping, restaurants, museums, and our five amazing art exhibits, we are your community airport! We are dedicated to enhancing the community by providing educational tours, military resources through our USO partnership, hosting your next event in the Observation Gallery where guests can watch planes take off, and encouraging students to explore careers in aviation and transportation through our youth programs. We look forward to serving you.

MARYLAND AVIATION ADMINISTRATION

WHO WE ARE



The Maryland Aviation Administration (MAA) is the owner and operator of Baltimore/Washington International Thurgood Marshall and Martin State airports and supports public-use airports throughout the state of Maryland. The MAA strives to manage these airports to enable growth in the regional economy and to enhance the travel experience for our passengers. This commitment to performance excellence and customer service has led BWI Marshall to be the busiest and most convenient airport in the Baltimore/Washington region. Our responsibility for supporting aviation statewide is met with our commitment to establish a best-in-class aviation system.

OUR MISSION

MAA is responsible for fostering safe and efficient operations, economic viability, and environmental stewardship in aviation activity state-wide. MAA operates two airports, BWI Marshall (BWI) and Martin State Airport (MTN). In addition, MAA's Office of Regional Aviation Assistance develops and regulates aviation activities at Maryland's 34 public-use airports. These efforts are guided by Maryland Department of Transportation's (MDOT) mission, which reads:

"The Maryland Department of Transportation is a customer-driven leader that delivers safe, sustainable, intelligent, exceptional, and inclusive transportation solutions in order to connect our customers to life's opportunities."



MAA'S STRATEGIC PLAN

Our strategic plan gives us the vision to “be better” — organizationally and individually by “Reimagined Opportunity.” The MAA’s plan focuses on goals that touch every aspect of airport operations and strengthen employees’ sense of importance in our overall success. Our commitment is to build on successes and respond to challenges in ways that exceed the loftiest expectations of customers and stakeholders.



GOALS

01

SAFETY

Ensure safe and secure operations and facilities.

02

PERFORMANCE

Ensure employee performance and engagement.

03

MANAGEMENT

Manage business efficiently, equitably, and responsibly.

04

CUSTOMER SERVICE

Improve customer service, community outreach, and stakeholder relations.

05

SUSTAINABILITY

Minimize harmful impacts to the environment.

BALTIMORE/WASHINGTON INTERNATIONAL THURGOOD MARSHALL AIRPORT



BWI Marshall is the premier commercial airport serving the Baltimore/Washington metropolitan area. As one of the top 25 airports in the U.S. and the busiest in the metropolitan area, BWI Marshall covers more than 3,000 acres.

BWI Marshall Airport's amenities include nearby hotels, convenient short-term and long-term parking, ground transportation options, easy access to rail service, a state-of-the-art international terminal, galleries featuring regional artists, animal relief areas, children's play areas, an observation gallery, great dining options, economy and upscale shopping, fitness facilities, and award-winning updated restrooms.

For passengers with the most selective tastes to more frugal travelers, flying from BWI Marshall is an adventure to be cherished.



AIR SERVICE HIGHLIGHTS

We'll Take You There! Our passenger traffic at BWI Thurgood Marshall Airport reached 24.7 million in FY 2023, an increase of 15% from the previous fiscal year. As the year progressed, passenger traffic in several months surpassed 2019 levels, prior to the pandemic. Here are a couple of highlights from 2023:

Frontier Airlines became the fastest-growing carrier, adding service to San Juan, Dallas/Fort Worth, and Tampa.



Southwest Airlines, our largest carrier, flew 8% more seats in 2023 than in 2019.

Copa Airlines, our newest international carrier, offers direct flights to Panama City, Panama, where passengers can access connecting flights to 70 destinations in 30 countries.



BWI MARSHALL ENHANCEMENTS

RESTROOM PROGRAM

The Terminal Restroom Enhancement Program includes six sets of state-of-the-art accessible restrooms on Concourses B, C, and D. Each new restroom features spacious stalls for luggage, individual ventilation, guidance lighting, smart touchless devices, a private adult changing room, and a lactation room. This \$55 million award-winning project is scheduled for completion in March 2024.



CONCOURSE A/B CONNECTOR AND BAGGAGE HANDLING

This project will expand the Terminal Concourse A/B Connector to allow direct connections between Concourses A, B and C. It includes concession spaces; expanding departure hold rooms at Gates A1-5 to accommodate the tenant airline fleet upsizing; and providing additional restroom facilities. On the Arrivals level, the outbound and inbound Baggage Handling System (BHS) is being replaced with a new and expanded BHS, including new baggage claim devices. Interior demolition of the abandoned Southwest Operations and University, exterior demolition of pavements, passenger boarding bridges, fixed sections, and associated foundations to construct a new Concourse A/B connector and Baggage Handling System is in progress.

SOUTHWEST AIRCRAFT MAINTENANCE FACILITY

The Aircraft Maintenance Facility project is underway to facilitate the future construction of an aircraft hangar capable of accommodating three Boeing 737 aircraft. It will include an aircraft parking apron with capacity for eight aircraft. The upgrades will bring the site to the future grade needed for the hangar development. This mass grading will result in more than a million cubic yards of waste material being removed from the hangar site and deposited at the MAA stockpile. Construction started in December 2021 and will be completed in June 2025.



UPCOMING CONSTRUCTION PROJECTS FOR BWI MARSHALL AIRPORT

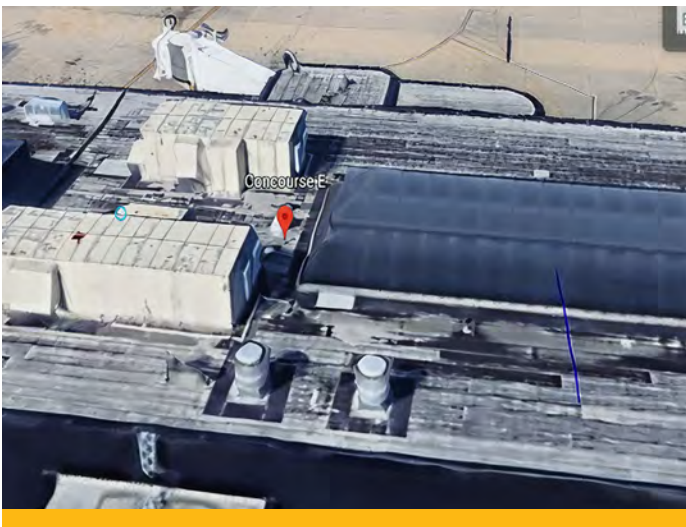
When traveling for leisure or business, passengers prefer BWI Marshall Airport because it is DMV’s “Easy Come, Easy Go” airport. As the economic generator for the state and regions, plans are underway to provide the ultimate customer experience offering a convenient and efficient airport for passengers. Our upcoming construction projects include the following:

CONCOURSE D BAGGAGE CLAIM EXPANSION

This expansion is intended to add two baggage carousels to Concourse D while having as little impact on the existing baggage belts as possible. The project will add two new baggage claim carousels with minimal impact on current operations.



CONCOURSE E BAGGAGE HANDLING SYSTEM



This project will expand the Checked Baggage Inspection System (CBIS) and Baggage Handling System (BHS) in Concourse E. The existing conveyors at Concourse E were installed with the original New International Terminal construction in the mid-1990s. Additionally, improving the Baggage Handling System (BHS) layout of Concourse E CBIS and Baggage Make-Up (BMU) facilities will expand the capacity and screening capabilities.

CHECKPOINT D EXPANSION

This improvement will in-fill the open floor at the D/E Checkpoint to allow for a two-lane expansion for security. The design of a two-lane expansion of Checkpoint D includes a new floor that will span over the interstitial space containing baggage conveyors that serve the International Baggage Claim.



TAXIWAY T RECONSTRUCTION PHASES 2 AND 3

This project involves comprehensive pavement reconstruction in Portland Cement Concrete of Taxiway T in two locations. The existing Taxiway T pavement identified for reconstruction starts at the Runway 15R deicing pad and extends to the limits of the previous Taxiway T Phase 1 project at Taxiway T2; and from eastern edge of Phase 1 to Taxiway E near the airfield lighting vault. The project also includes demolition of the portion of Taxiway F between Taxiways T and P, as well as widening existing Taxiway T shoulders to the standard 30-foot width. This stretch of taxiway receives heavy traffic from aircraft taxiing primarily to access Concourses A and B and the pavement, which has been repaired several times during past years, is exhibiting signs of distress.

OUTSTANDING BUSINESS AWARDS AND COMMUNITY ENGAGEMENT

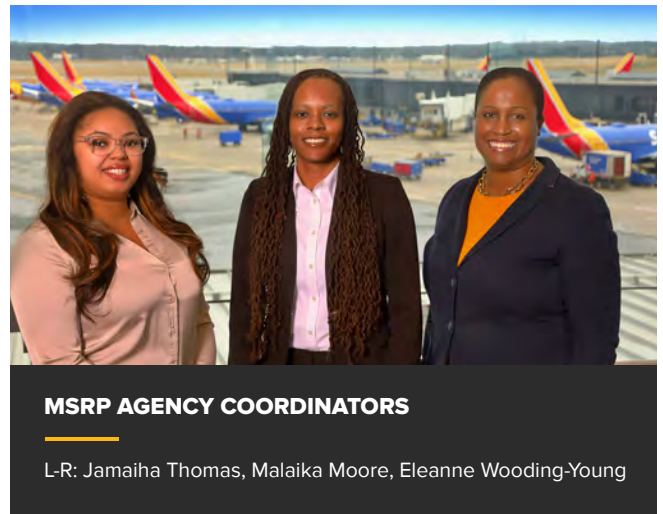


AMERICA'S BEST RESTROOM AWARD

L-R: Julia Walsh (Cintas Corp.), Ricky D. Smith, Sr.

This year, the MAA had many reasons to celebrate. We claimed the title of America's Best Restroom Contest, North America's top ten best Regional Airports, and two Planning and Engineering MdQI Modal, Safety and Recognition awards. These awards speak volumes about the airport's commitment to operational excellence in providing the ultimate customer experience for its passengers.

- Cintas Corporation named BWI Marshall the winner of the **2023 America's Best Restroom™ Contest**.
- The Maryland Quality Initiative (MdQI) awarded the Division of Planning & Engineering the **MdQI Modal Award of Excellence** for projects under \$5 million.
- MdQI awarded the Division of Planning & Engineering the **MdQI Modal Award of Excellence** for projects over \$5 million.
- BWI Marshall Airport was recognized at the Skytrax 2023 World Airport Awards as one of the **Top Ten List of Most Improved Airports** and one of **North America's Top Ten Best Regional Airports**.
- The State Employees Risk Management Association awarded the Office of Safety & Risk Management the **Best Practice Award**.
- The Maryland Teachers & State Employees Supplemental Retirement Plans (MSRP) awarded the Office of Organizational Development the **MSRP Agency Coordinator Recognition Award**.
- The American Concrete Institute Maryland Chapter awarded MAA Engineering and Construction an **Excellence in Concrete Construction Award** in the Flatwork category.



MSRP AGENCY COORDINATORS

L-R: Jamaiha Thomas, Malaika Moore, Eleanne Wooding-Young

- The American Society of Civil Engineers, Maryland Section, awarded Franz A. Ollerman the **Civil Engineer of the Year Award**.
- The Maryland Department of Transportation Safety Commission awarded the Office of Safety & Risk Management the **Safety-First Award**.
- The Order of Malta Federal Association, U.S.A. awarded BWI Marshall Airport the **President's Award** for providing excellent customer service support on two chartered flights carrying 600 passengers to a pilgrimage in Lourdes, France.



ENGINEER OF THE YEAR

L-R: Holly Ollerman, Franz A. Ollerman (MAA)



L-R: Clair McCormick, Chair of Order of Malta (OOM) Pilgrimage Committee, Deacon Michael Stanekwicz, Executive Director for OOM, Ricky D. Smith, Sr., Executive Director/CEO



MAA'S ENGINEER TEAM

L-R: Franz A. Ollerman, Candace Long (McKnight), Paul Shank, Tom Varughese, Christine Varney (ADCI), Tom Defant (Jacobs)

CORPORATE SOCIAL RESPONSIBILITY

BWI Marshall increased its efforts to integrate corporate social responsibility initiatives into a brand identity. We have advanced programs across the organization to improve youth, regional nonprofits, equitable business practices, a sustainable environment, and community enhancements. The BWI Marshall team demonstrates its leadership and commitment to meaningful relationships with the community for years to come.



COMMUNITY PARTNERS PROGRAM

BWI Marshall proudly assists Maryland and Washington, D.C. based nonprofits in increasing public awareness about their important work. Organizations may apply to have their artwork displayed at one of the many dedicated locations throughout the airport terminal. The simple online application process is available at [Community Partners Program](#).

TRANSPORTATION COMMUNITY ENHANCEMENT GRANTS

BWI Marshall supports neighbors who live in communities impacted by the airport's daily operations by providing an opportunity to apply for transportation-related grants. Typical enhancement projects include sidewalk repairs and speed bumps. Grant applications are reviewed by a committee of 11 members appointed by the Secretary of the Maryland Department of Transportation. To find out if your neighborhood is eligible, go to [Community Grants](#).

COMMUNITY ENGAGEMENT



FRONT ROW L-R: Diana Leon Brown, Senator Dawn Gile, Senator Arthur Ellis, Senator Pamela Beidle, Senator Melony Griffith, Senator Katherine Klausmeier, Senator Clarence K. Lam, Senator Justin D. Ready
BACK ROW L-R: Patrick Carlson, David Smulski, Nathan McCurdy, Tammy Kraft

Maryland's Senate Finance Committee members enjoyed an airfield tour and presentations about the history of BWI Marshall and forthcoming capital projects. Their dialogue with senior staff members included discussions about the MAA's financial standing, noise mitigation efforts, corporate social responsibility, and goals for new air service.

MAA'S MILITARY SUPPORT

BWI USO *Airport Lounge*

LOCATED ON THE
LOWER LEVEL,
NEXT TO BAGGAGE
CLAIM 14



We are proud to support our military community! The USO International Gateway Lounge at BWI Marshall is one of the largest USO facilities in the world, providing comfort to more than 80,000 military personnel and their families each year. Friendly and helpful USO volunteers are trained to support military community members during their journey to every part of the world. Complimentary services include baggage storage, a snack bar, comfy chairs, wake-up calls, the Bob Hope Legacy Reading Program, and services for families of fallen heroes.

HONOR FLIGHTS

More than 10,000 veterans landed at BWI Marshall in 2023 to visit the Washington, D.C. war memorials and Arlington Cemetery. The Honor Flight Network, a nonprofit organization, is dedicated to providing honor and closure to our heroes, especially World War II and terminally ill veterans. BWI Marshall partners in this endeavor by greeting each plane with a ceremonial water salute by fire-fighting vehicles, as well as by providing logistical support.



DIGNIFIED TRANSFERS

To honor those who have given their lives in service to our country, BWI Marshall performs a solemn, dignified transfer of the service person's remains, witnessed by the family of the deceased. After a water salute by fire-fighting vehicles on the taxiway, a carry team of military personnel removes the transfer case from the aircraft and places it in the hearse. The ceremony includes a senior-ranking member of the military and an Honor Guard. The family is accompanied by representatives from the Maryland Aviation Administration, the Maryland Transportation Authority Police, BWI Marshall's Airport Fire and Rescue Department, the Transportation Security Administration, and the airline carrier. BWI Marshall's dedicated team coordinated almost 50 dignified transfers in 2023.



BUSINESS OUTREACH

Under federal and state guidance, the MAA established the Minority Business Enterprise/Disadvantaged Business Enterprise (MBE/DBE) Program. Through this program, the MAA is making persistent efforts to ensure nondiscrimination in contract awards and administration, and to create a level playing field on which MBE/DBEs can compete. The MAA encourages all eligible minority and disadvantaged businesses to become certified and compete for upcoming projects. For certification information, please visit [Maryland's Official Certification Agency](#).

We support small businesses and take pride in our business outreach and training. The MAA emphasizes outreach and supports efforts to maximize local business participation at its airports. About 40% of the BWI Marshall food and retail concessions are small, local, and minority owned businesses. The BWI Marshall Airport Concessions Disadvantaged Business Enterprise (ACDBE) program accounted for more than \$50 million in sales in 2023. The annual SynergyBWI Business Networking event provided local entrepreneurs with valuable information and networking opportunities related to major airport contracting opportunities at both airports.

2023 OUTREACH EVENTS

- Maryland Hispanic Business Conference
- MBE Night in Annapolis
- MAA's Office of Diversity, Equity and Inclusion Outreach Event for Small, Minority & Women-owned Businesses
- Howard County Executive's Small Business Summit
- Governor's Office of Small, Minority & Women Business Affairs Ready, Set, GROW! Procurement Connections Workshop
- SynergyBWI Business Networking Event
- Governor's Office of MBE Programs Event



2023 SynergyBWI EXHIBIT HALL



2023 SynergyBWI EXHIBIT HALL



COMMITMENT TO YOUTH

SUMMER YOUTH INITIATIVE

For one week in August, this MAA program immerses 50 students from various Baltimore City recreation centers. The program exposes them to multiple aspects of the aviation and aeronautical industry. They have opportunities to visit the Transportation Security Administration, Customs & Border Protection, Airport Police and FBI, Airport Fire and Rescue for CPR training, equipment and live burn pit demos, as well as tour air cargo facilities, freight aircraft, and many other areas within the BWI Marshall Airport. Students also visit Martin State Airport and their flight schools and take a field trip to the Community College of Baltimore County Catonsville for a day of flight simulators and robotics. Last year, more than 30 partners and corporate sponsors provided funding and resources to create a lifetime of memories for students.



Sixth Annual Summer Youth Initiative

Students also visit Martin State Airport and their flight schools and take a field trip to the Community College of Baltimore County Catonsville for a day of flight simulators and robotics. Last year, more than 30 partners and corporate sponsors provided funding and resources to create a lifetime of memories for students.

EDUCATIONAL TOURS



Students and Volunteers from the Braille Enrichment for Literacy and Learning Academy

MAA's staff hosted an educational tour for students with vision impairments and their chaperones from the Braille Enrichment for Literacy and Learning Academy, helping them experience air transportation and travel processes at BWI Marshall.

MAA's Planning & Engineering staff hosted Morgan State University Graduate students. Staff provided an overview of the BWI Marshall and Maritn State airports, described the purpose of an airport layout plan, and explained the importance of pavement management. The class received a guided tour of BWI's parking structures and engaged in an educational discussion about airport infrastructure maintenance.



ENVIRONMENTAL STEWARDSHIP

As a community partner, we care about the protection of the natural environment. The MAA understands the importance of protecting and preserving our air, water, and natural resources while providing exemplary service to passengers, employees, and the surrounding community. While demand for air travel continues to grow in this region, the MAA is committed to reducing the impact that the airport and its associated functions have on our environment.

2023 Highlights:

- BWI Marshall became the seventh major U.S. commercial airport to launch a zero-waste sustainability program that collaborates with partners to collect used cooking oil and convert it into renewable fuels. Monthly, more than five tons of cooking oil from BWI Marshall kitchens is recycled into sustainable aviation fuel by Mahoney Environmental.
- Earth Day recycling efforts resulted in a donation of 600+ binders for students at Baltimore County Public Schools.
- Food waste composting expanded to include all restaurants at BWI Marshall. Maryland Environmental Service collects almost 11 tons of food waste each month to create compost.
- BWI Marshall supports Oyster Recovery Partnership, a local nonprofit, in its efforts to restore the Chesapeake Bay's native oyster population. Some 6,000 oyster shells are collected monthly from airport restaurants.
- The MAA continues to go green! In partnership with BGE, five fast chargers for electric vehicles were installed in the Express Lot, increasing the number to 15.
- BWI Marshall's restroom improvement project features energy-efficient LED lighting and efficient water fixtures that yield an average of 20% water savings per passenger.



BWI MARSHALL RESIDENTIAL SOUND INSULATION PROGRAM



The MAA has participated in the Federal Aviation Administration's (FAA) voluntary Code of Federal Regulations Part 150 Airport Noise Compatibility Program since the mid-1980s. Under this program, eligible homes and schools receive sound insulation treatments that mitigate the impact of airport operations on local communities. This good neighbor program improves the quality of life for residents and preserves the long-term operational sustainability of the airport.

The MAA received an FAA Airport Improvement Program grant and issued a notice to proceed with construction on sound insulation for 18 single-family residences in Glen Burnie/Severn neighborhoods in late 2023.

For more information visit
www.marylandaviation.com

THE ROUNDTABLE

The DC Metroplex BWI Marshall Community Roundtable was established at the FAA's request in 2017. The Roundtable collaborates with the FAA to address public noise concerns related to the FAA's regional NEXTGEN airspace modernization initiatives for aircraft operations. Roundtable members are appointed by Maryland legislative representatives from districts surrounding BWI Marshall.

The Roundtable submitted flight track change recommendations for noise mitigation in affected communities to the FAA for review in 2019. The FAA presented its findings to the MAA, the Roundtable, and industry partners. The MAA and industry partners reviewed and concurred with the findings in September 2023. The FAA anticipates publication of their updated procedures to help mitigate the noise impacts beginning in May 2024.

MARTIN STATE AIRPORT



Martin State Airport (MTN) is a general aviation reliever airport designated to relieve congestion at commercial airports and to provide improved aviation access to the community. The airport is located in Middle River, Maryland, and covers 747 acres. This airport caters to many general aviation operations, including private and corporate operators that provide helicopters, private jets, flight training schools, and emergency air carriers, and is also the home to the Maryland Air National Guard and Glenn L. Martin Maryland Aviation Museum. Martin State Airport offers an overwater approach if you're visiting the Baltimore/Washington area or simply refueling.

ENHANCEMENTS FOR MARTIN STATE AIRPORT

- MTN obtained an FAA Airport Improvement Program grant in FY23 and initiated the design of lowering the Amtrak Catenary lines. This project will protect navigable airspace and reclaim usable runway length for civilian and military aircraft operators.
- MTN also received \$48M in Department of Defense and state funding and began designing the runway rehabilitation project. The bid process and contract award(s) are scheduled for FY24.



UPCOMING CONSTRUCTION PROJECT FOR MARTIN STATE AIRPORT

There's a new Air Traffic Control Tower (ATCT) coming soon to Martin State Airport. The newer, taller tower will be strategically positioned to provide air traffic controllers with an improved line of sight, enhancing airport visibility and enabling them to monitor and manage traffic more effectively. The design is currently underway and nearing completion.

The new ACTC will replace the existing control tower that's over 70 years old. The proposed facility will be constructed, owned, and maintained by the MAA. The new facility will continue to be operated by FAA air traffic controllers.

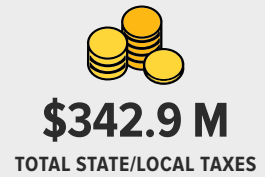


BWI MARSHALL AIRPORT ECONOMIC IMPACT

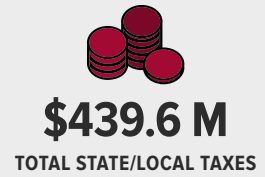
OVERVIEW - FY2023



AIRPORT - GENERATED



VISITOR - GENERATED



IMPACT ON STATE AND LOCAL REVENUE (MILLIONS)

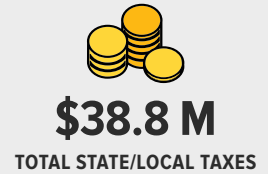


MARTIN STATE AIRPORT ECONOMIC IMPACT

OVERVIEW - FY2017



AIRPORT - GENERATED



VISITOR - GENERATED



IMPACT ON STATE AND LOCAL REVENUE (MILLIONS)



FINANCIAL RESULTS

MARYLAND AVIATION ADMINISTRATION
BALTIMORE/WASHINGTON INTERNATIONAL THURGOOD MARSHALL AIRPORT
AND MARTIN STATE AIRPORT
COMPARATIVE STATEMENT OF REVENUE, EXPENSE AND INCOME (THOUSANDS)

	FY 2023	FY 2022	DIFFERENCE	% CHANGE
TTF REVENUE AND EXPENSE				
TTF OPERATING REVENUE	\$284,591	\$275,372	\$9,219	3.3%
TTF REVENUE - FEDERAL	\$110	\$83,640	(\$83,530)	-99.9%
MAA OPERATING EXPENSE	\$224,782	\$211,981	\$12,801	6.0%
TTF SURPLUS/(DEFICIT)	\$59,919	\$147,031	(\$87,112)	-59.2%
NON-TTF				
NON-OPERATING REVENUE	\$63,860	\$47,852	\$16,008	33.5%
NON-TTF DEBT SERVICE	\$33,190	\$32,272	\$918	2.8%
NON-TTF SURPLUS/(DEFICIT)	\$30,670	\$15,580	\$15,090	96.9%
TOTAL MAA SURPLUS/(DEFICIT)	\$90,589	\$162,612	(\$72,023)	-44.3%
CAPITAL PROGRAM EXPENDITURES	\$180,141	\$104,698	\$75,443	2.8%
ENPLANEMENTS (000'S)	12,365,276	10,694,176	1,671,100	15.6%

MARYLAND AVIATION ADMINISTRATION
STATEMENT OF REVENUE
FISCAL YEAR ENDING - JUNE 30, 2023 AND 2022

	FY 2023	FY 2022	DIFFERENCE	% CHANGE
BWI MARSHALL OPERATING REVENUE (TTF)				
FLIGHT ACTIVITIES	\$72,862,829	\$68,794,611	\$4,068,218	5.9%
RENTS & USER FEES	\$82,685,626	\$81,791,818	\$893,808	1.1%
PUBLIC PARKING	\$79,827,020	\$67,340,275	\$12,486,745	18.5%
RENTAL CARS	\$18,165,450	\$16,601,801	\$1,563,649	9.4%
RETAIL, FOOD & BEVERAGE	\$18,223,965	\$17,194,335	\$1,029,630	6.0%
OTHER PASSENGER CONCESSIONS	\$8,971,068	\$6,363,894	\$2,607,174	41.0%
NON-PASSENGER CONCESSIONS	\$5,060,339	\$4,493,009	\$567,330	12.6%
OTHER REVENUE	\$13,432,495	\$2,932,864	\$10,499,631	358.0%
TOTAL BWI MARSHALL OPERATING REVENUE	\$299,228,792	\$265,512,608	\$33,716,184	12.7%
MARTIN OPERATING REVENUE (TTF)	\$12,241,649	\$12,012,931	\$228,718	1.9%
TOTAL MAA OPERATING REVENUE	\$311,470,441	\$277,525,538	\$33,944,902	12.2%
REVENUE BOND DEBT SERVICE ¹	(\$26,879,261)	(\$2,153,493)	(\$24,725,769)	1148.2%
MAA OPERATING REVENUE TO THE TTF	\$284,591,180	\$275,372,046	\$9,219,134	3.3%
OTHER REVENUES TO THE TTF²				
FEDERAL STIMULUS REIMBURSEMENTS	\$109,740	\$83,639,679	(\$83,529,939)	-99.9%
TOTAL OTHER REVENUES TO THE TTF	\$109,740	\$83,639,679	(\$83,529,939)	-99.9%
TOTAL TTF REVENUE	\$284,700,920	\$359,011,725	(\$74,310,805)	-20.7%
NON-OPERATING REVENUE³				
CUSTOMER FACILITY CHARGES	\$9,429,658	\$8,415,033	\$1,014,625	12.1%
PASSENGER FACILITY CHARGES	\$45,520,385	\$39,019,393	\$6,500,992	16.7%
INTEREST INCOME	\$8,909,777	\$417,687	\$8,492,090	2033.1%
TOTAL NON-OPERATING REVENUE	\$63,859,820	\$47,852,113	\$16,007,707	33.5%
TOTAL MAA REVENUE PRIOR TO DEBT	\$375,440,001	\$409,017,330	(\$33,577,329)	-8.2%

NOTES:

- 2021A Revenue Bonds refunded Parking and MEDCO debt February 2021. Payments represent monthly set asides to Trustee for future debt payments. Actual debt payments are due February and August.
- FY 2023 includes CRRSAA Concession Relief Funds for consulting expenses \$56,904 and ARPA Martin Sewer reimbursement \$52,836.
- FY2022 Federal Reimbursements from CRSSAA and ARPA. \$79,476,802 to payback TTF capital advance and \$4,053,137 for Operating expenses. See expenses.
- Interest income captures revenue bonds beginning FY 2023. FY 2022 revenue bond interest excluded \$845,238.

SUMMARY

In FY 2023, MAA continued to see recovery from the pandemic with double digit growth over the prior fiscal year. Operating revenues (e.g. airlines rates and charges, concession and parking revenues) totaling \$311.5 million increased 12.2%, enplanements totaling 12.4 million increased 15.6% and landed weight totaling 15.4 billion pounds increased 14.7%. MAA operating expenses totaling \$224.8 million increased 6.0%.

FEDERAL FUNDING STRATEGY CONTINUES

The passage of the Bipartisan Infrastructure Law (BIL) in FY 2022 made additional federal funding available to MAA to improve airport infrastructure over the next several years. MAA has been able to program \$170 million in anticipated Airport Improvement Program (AIP) federal funding to construct critical airfield and terminal improvement projects at BWI Marshall and Martin. Through FY 2026, MAA entitlement increases to at least \$25 million for BWI and \$800 thousand for Martin. MAA was awarded its first BIL grant in FY 2023, totaling \$15 million to fund the Taxilane N & N1 Reconstruction project currently underway. In addition, MAA has been aggressive in submitting applications to compete for discretionary grant opportunities that have been expanded under the passage of BIL.

In FY 2023, MAA was awarded three discretionary grants totaling over \$60 million in federal funding for Concourse A/B and Baggage Handling System Program, the Residential Sound Insulation Program and Taxiway F Relocation, Phase II Project.

REVENUE BOND STRUCTURE

MDOT issues Special Transportation Project Revenue Bonds, on behalf of MAA. In July 2021, MDOT issued MAA's second series (2021B) for \$200 million in new funding which also received investment grade ratings and favorable interest rates. This new funding is being used for the Terminal A/B Connector & Baggage Handling System Project. A third series of approximately \$225 million is planned for calendar year 2024 for the completion of funding for the aforementioned project.

FY 2023 PROFIT AND LOSS STATEMENT

In FY 2023, operating revenues increased \$33.9 million due to public parking revenues of \$12.5 million, airline revenues of \$12.9 million and other concessions and revenues of \$8.5 million. MAA operating expenses increased by \$9.2 million from inflation, labor costs, and contractual increases.

Overall, MAA's revenues are considerably higher than pre-pandemic revenue levels and continues to make a strong financial recovery.

MARYLAND AVIATION COMMISSION

The Maryland Aviation Commission establishes the policies by which the airport operates and is composed of 13 voting members. Twelve members are appointed by the Governor with the advice and consent of the Senate, with the Secretary of the Maryland Department of Transportation serving as Chair and 13th voting member, and the Secretary of the Maryland Department of Commerce serving as a nonvoting ex-officio member.

PAUL J. WIEDEFELD, CHAIRMAN

SECRETARY, MARYLAND DEPARTMENT OF TRANSPORTATION

EDWARD CAREY

JESSE CHANCELLOR

T. CHINETA K. DAVIS

LISA ELLIS

DREW HAWKINS

JOSÉ MORALES

RAYMOND C. NICHOLS

MARY REESE

DR. CEDRIC SIMS

KAREN PRICE-WARD

DAVID L. WINSTEAD, ESQ.

DR. ZAFAR ZAFARI

KEVIN ANDERSON, EX OFFICIO

SECRETARY, MARYLAND DEPARTMENT OF COMMERCE

RICKY D. SMITH, SR. EXECUTIVE DIRECTOR/CEO

MARYLAND AVIATION ADMINISTRATION

BWIAIRPORT.COM

MARTINSTAETAIRPORT.COM

