



BALTIMORE-WASHINGTON INTERNATIONAL THURGOOD MARSHALL AIRPORT

# OPERATIONAL MANAGEMENT & PERFORMANCE

GENERAL INFORMATION No. 2



# TABLE OF CONTENTS

- INTRODUCTION
  - Disclaimer
- OPERATIONAL MANAGEMENT PERFORMANCE
  - Joint Marketing Fund
  - Common Area Maintenance
  - Delivery & Distribution



# DISCLAIMER

Past activity may not be indicative of future activity. The administration makes no guarantee of the accuracy or reliability of such information provided to the Administration by the airlines and other sources. All data provided is for informational purposes and the Administration is not responsible for any inaccuracies thereof. No warranty is intended or implied.

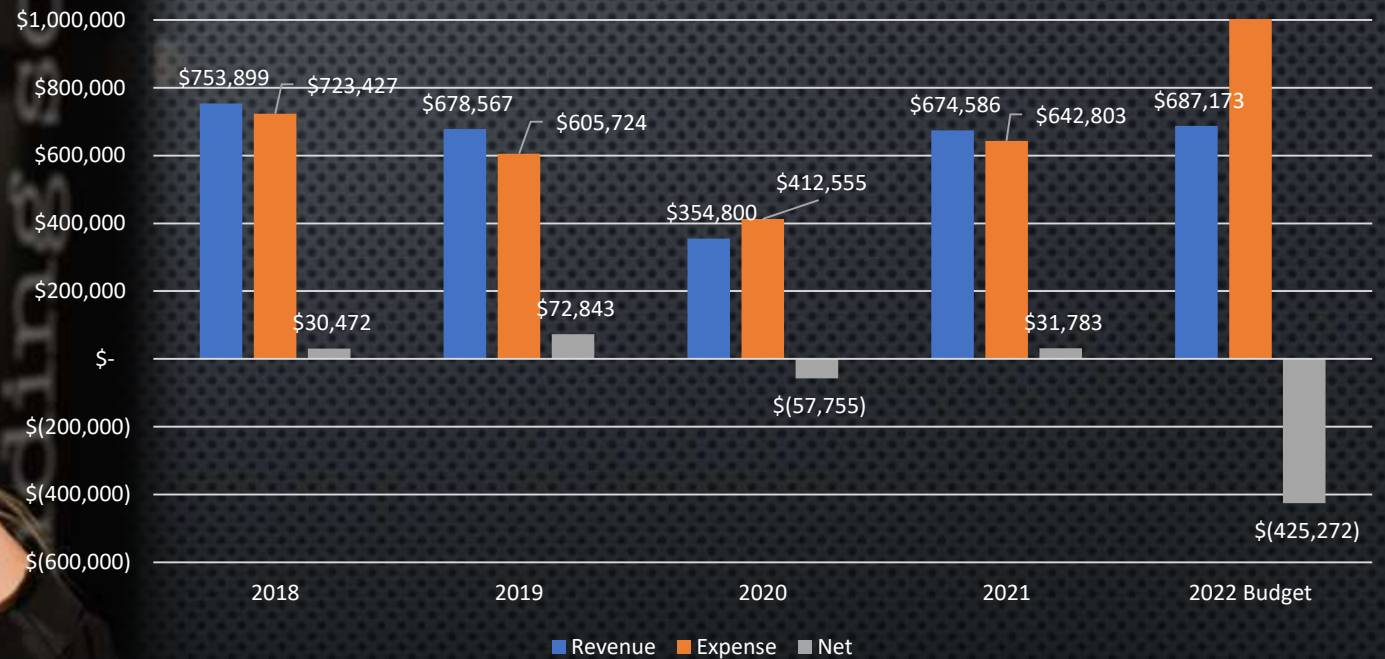


# OPERATIONAL MANAGEMENT & PERFORMANCE

# JOINT MARKETING FUND



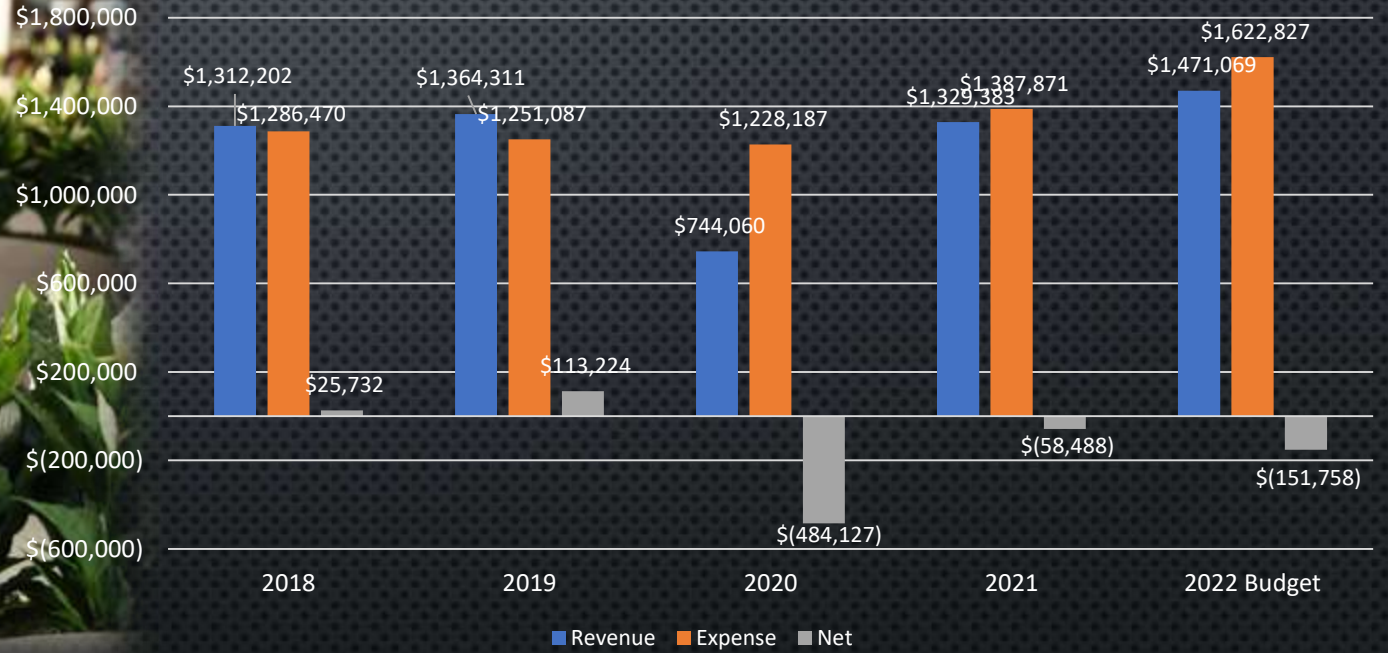
Joint Marketing Fund



# COMMON AREA MAINTENANCE (CAM) FUND



Common Area Maintenance



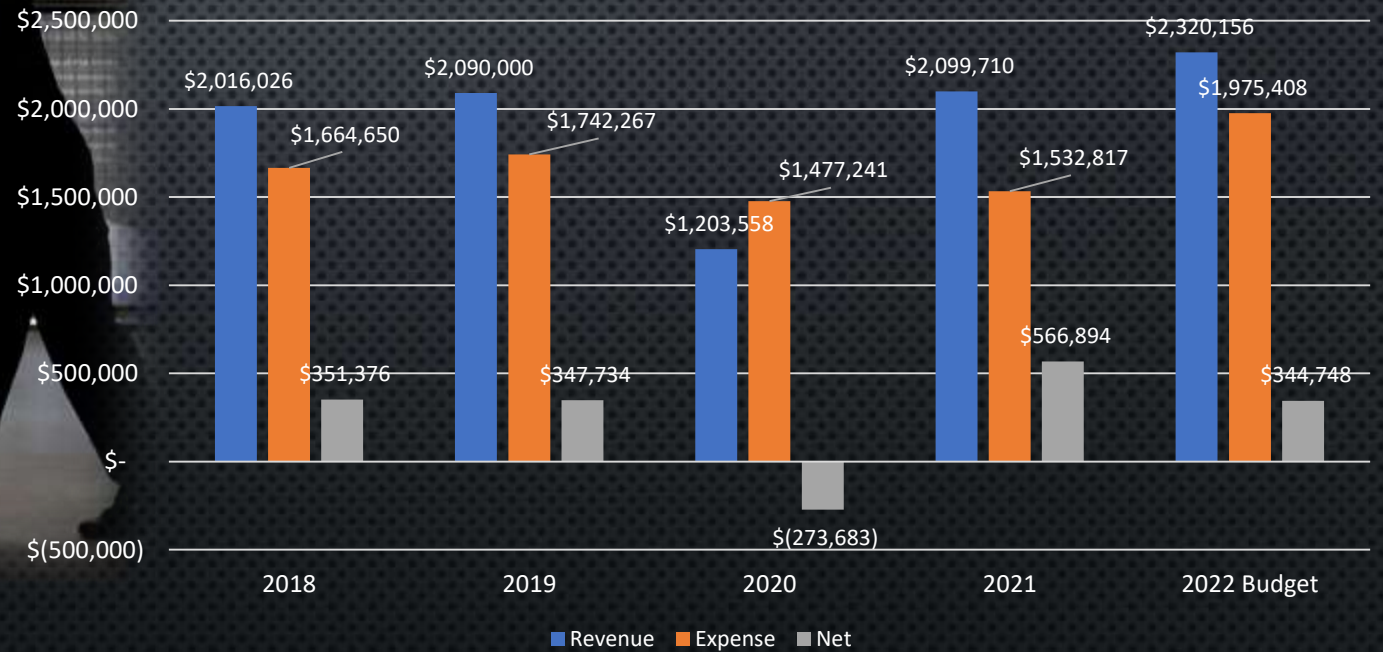
# DELIVERY AND DISTRIBUTION FUND



**BRADFORD**  
WHEN SECURITY AND TIMING ARE EVERYTHING™  
AIRPORT LOGISTICS

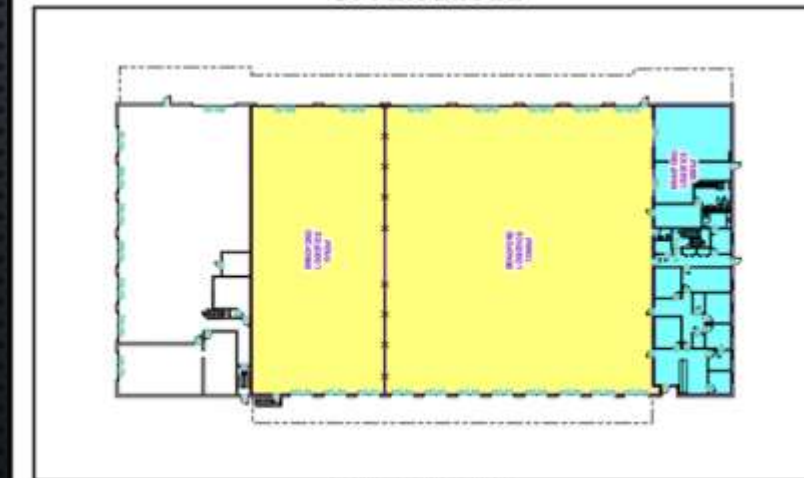
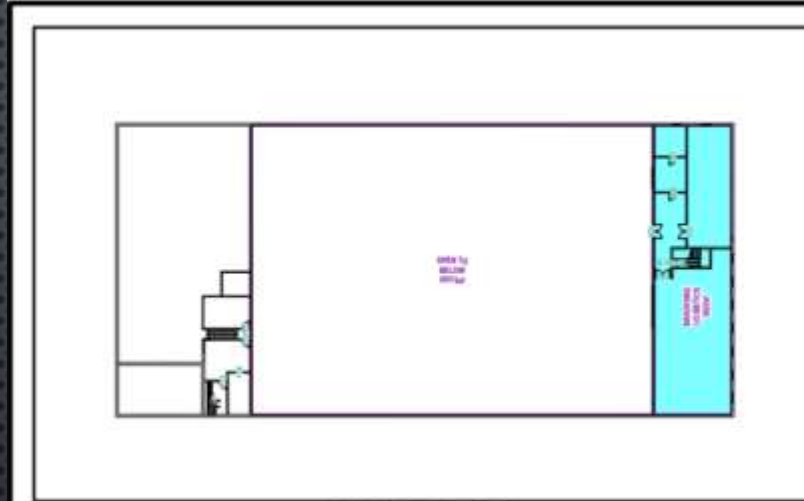


Delivery and Distribution



# ON-AIRPORT CENTRALIZED RECEIVING AND DISTRIBUTION FACILITY (CRDF)

The CRDF is located in Building No. 107 on Air Cargo Road, immediately northwest and within walking distance of the Airport Terminal Building. The facility sits on a 1.58-acre parcel improved with a warehouse building. Bradford Logistics currently maintains approximately 13,560 square feet of non-air-conditioned warehouse space and 3,883 square feet of air-conditioned office space with another 3,922 square feet of air-conditioned office space at mezzanine level. The leased premises under a proposed new contract will expand the facility by 6,762 square feet, bringing the total amount of ground level warehouse space to 24,205 square feet. The facility is pending a nearly \$1.1 million renovation.



**EXTERIOR**

<b>Legend</b>	<ul style="list-style-type: none"> <li><span style="display: inline-block; width: 15px; height: 10px; border: 1px solid black; background-color: white;"></span> Building Footprint</li> <li><span style="display: inline-block; width: 15px; height: 10px; border: 1px solid purple;"></span> Landside Vehicle Parking</li> <li><span style="display: inline-block; width: 15px; height: 10px; border: 1px solid pink;"></span> Airside Ramp Space</li> <li><span style="display: inline-block; width: 15px; height: 10px; border: 1px solid green;"></span> Grassy Areas</li> <li><span style="display: inline-block; width: 15px; height: 10px; border: 1px solid orange;"></span> Employee Parking</li> </ul>	<p><b>Interior Space</b></p> <ul style="list-style-type: none"> <li>Air-Conditioned Office Space: 7,805sf</li> <li>Non-A/C Warehouse Space: 20,322sf</li> <li><b>Total Interior Space: 28,127sf</b></li> </ul> <p><b>Land</b></p> <ul style="list-style-type: none"> <li>Ramp Space: 8,074sf</li> <li>Parking Space: 8,519sf</li> <li>Grass Space: 2,094sf</li> <li><b>Total Land: 18,687sf (0.43ac)</b></li> </ul>
---------------	---	---

<p>Location</p>	<p>Date: 2021-11-18</p> <p><b>NOTE:</b> This exhibit depicts only square footage of leased area and is not intended to address construction details.</p>	
-----------------	--	--



