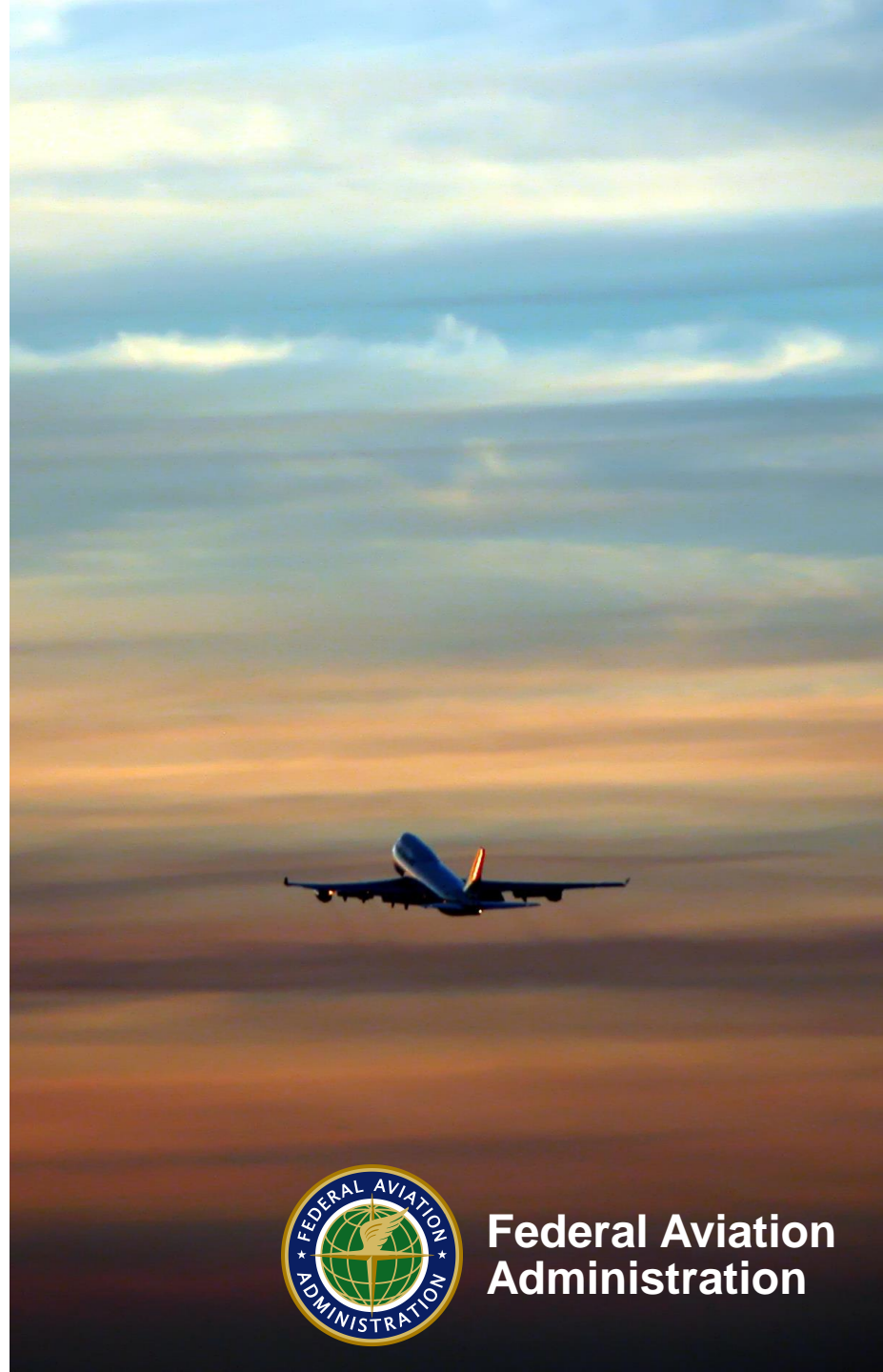


# FAA Updates to BWI Roundtable

May 16, 2017



Federal Aviation  
Administration

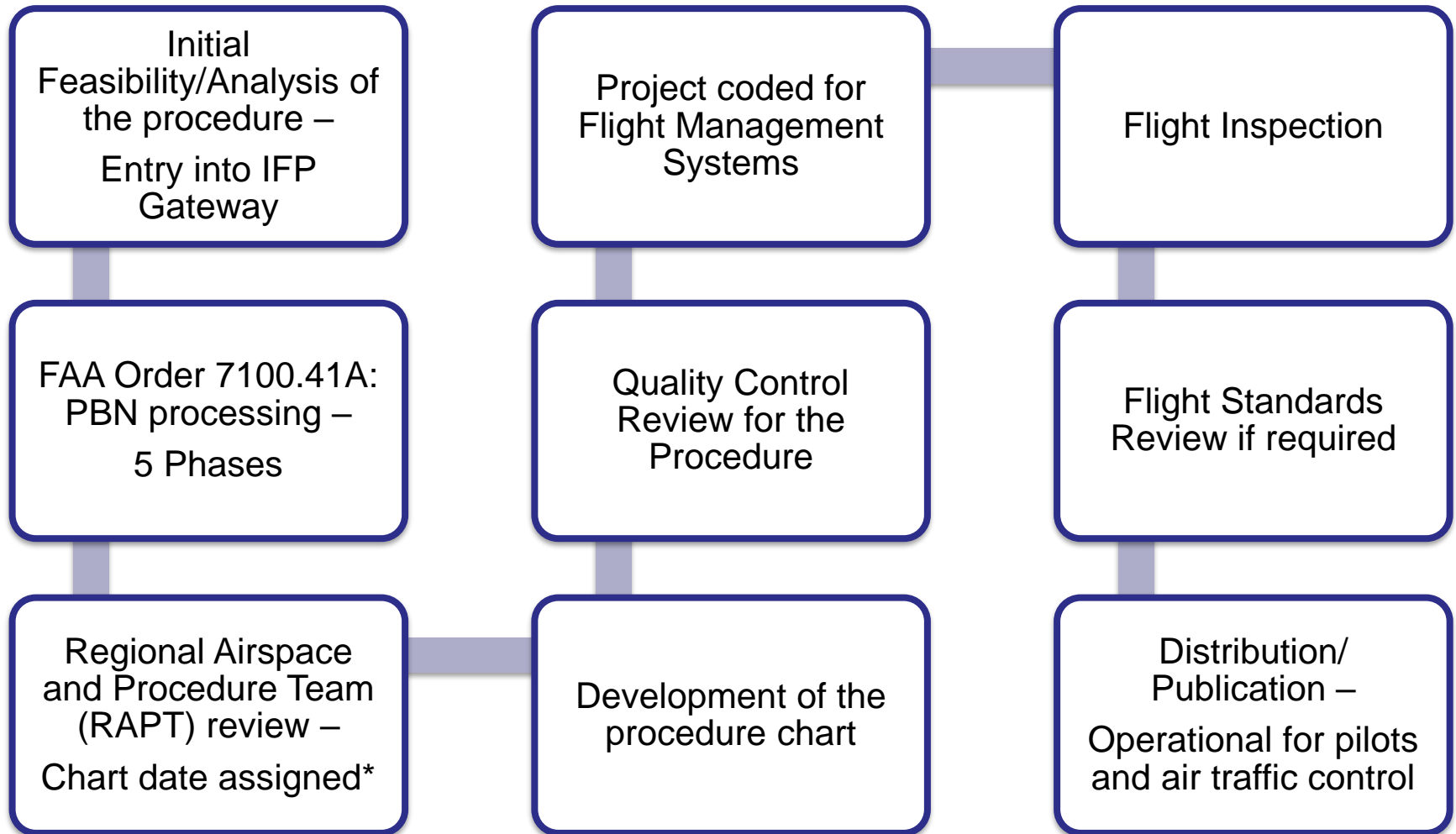


# FAA Actions/IOUs

- Written response to March Roundtable recommendation
- Continued dialogue and analysis of current and former flight tracks and altitudes focused on Runway 28 departures and Runway 33L arrivals
- Use more data from a longer period of time vs a single day
- Show procedures and tracks further out from the airport
- Show big picture of where procedures and tracks intersect
- Show altitude information for current and former procedures
- Identify short and long term possibilities to address noise concerns
- Create a plan to make changes
- Provide comments from October 2017 workshop
- Provide the Post-Implementation Report for DC Metroplex
- Provide web address for DC Metroplex EA
- Explain the process for changing an Instrument Flight Procedure



# Instrument Flight Procedure Process



\*EXPECTED PROCESS TIME: 18-24 months



Federal Aviation  
Administration

# Performance Based Navigation (PBN) Processing

- **PHASE 1: Preliminary Activities** - Baseline analysis to identify expected benefits; develop conceptual procedures and/or routes.
- **PHASE 2: Design Activities** – Full working group formed to do formal designs; initial outreach activities begin; early coordination for publication slots; industry “flies” proposals in simulators; environmental and safety reviews.
- **PHASE 3: Development and Operational Preparation** – ATC training; ATC automation updates; traffic management coordination; updates to radar maps; implementation planning with industry.
- **PHASE 4: Implementation** – Procedure is published and in operational use.
- **PHASE 5: Post-Implementation** – Procedure is evaluated for 6 months to make sure it is working as designed.





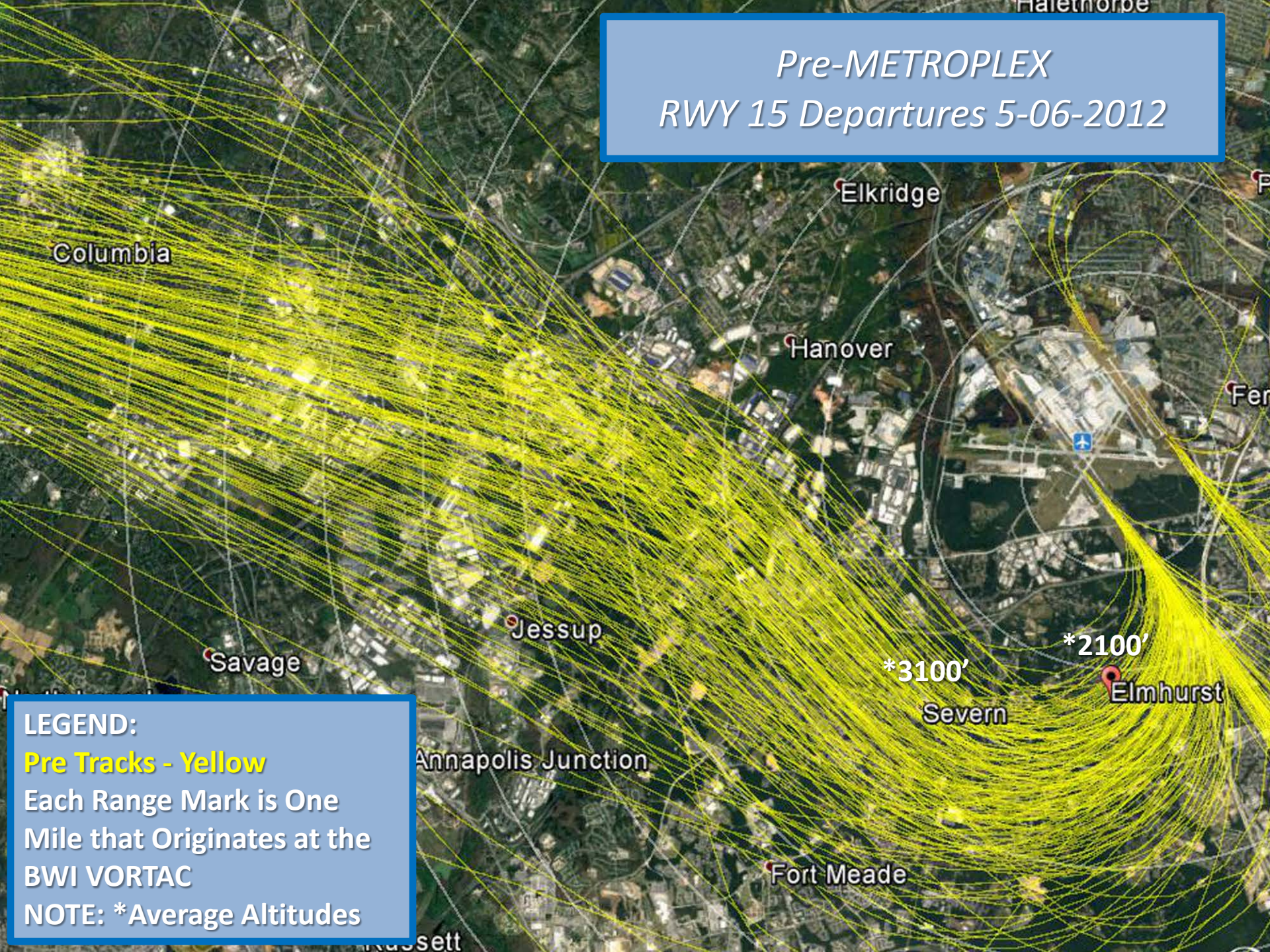
# DC Metroplex Environmental Assessment

- [http://www.metroplexenvironmental.com/dc\\_metroplex/dc\\_docs.html](http://www.metroplexenvironmental.com/dc_metroplex/dc_docs.html)





*Pre-METROPLEX  
RWY 15 Departures 5-06-2012*



**LEGEND:**

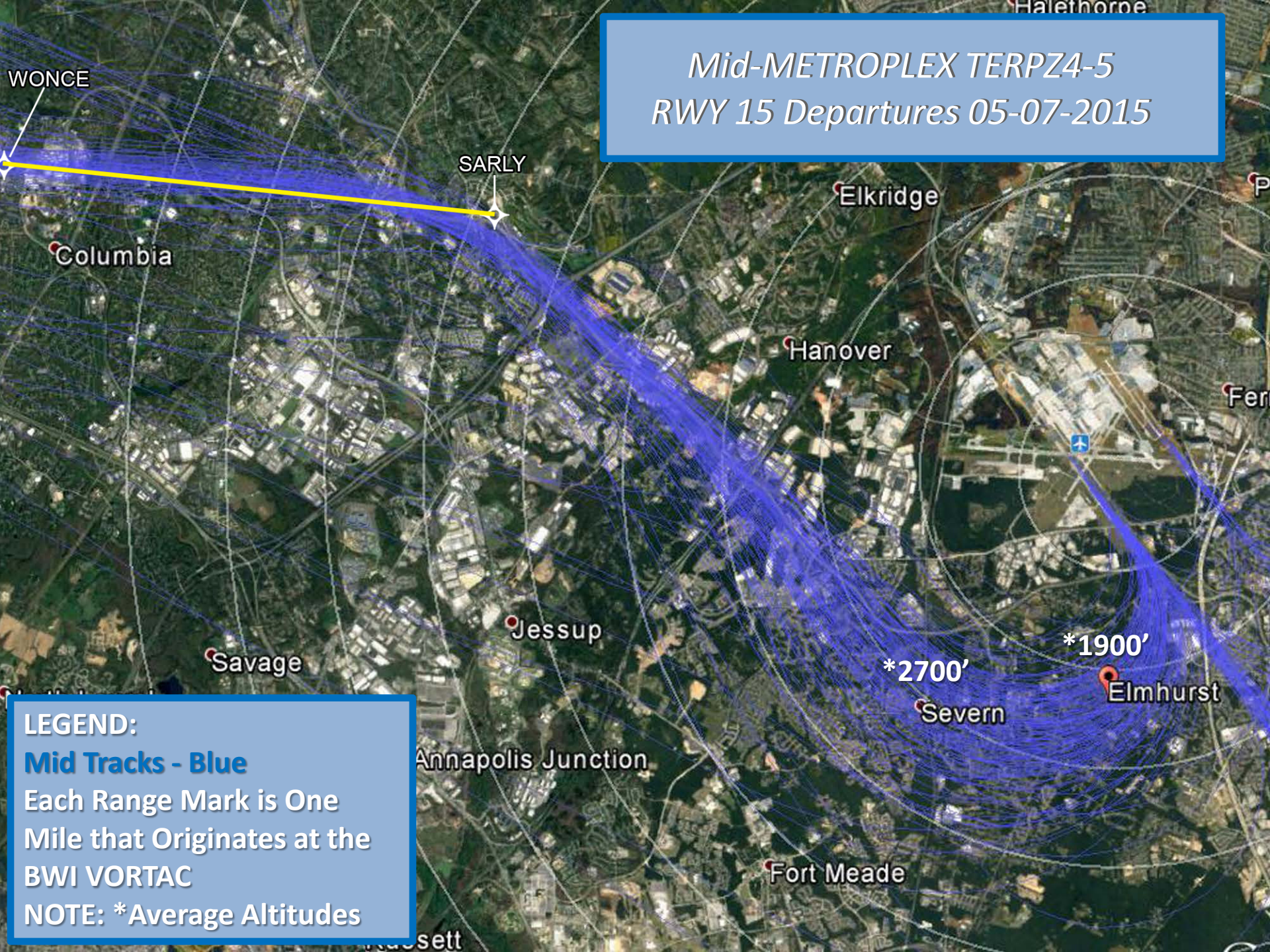
**Pre Tracks - Yellow**

Each Range Mark is One  
Mile that Originates at the  
BWI VORTAC

NOTE: \*Average Altitudes



*Mid-METROPLEX TERPZ4-5  
RWY 15 Departures 05-07-2015*



**LEGEND:**

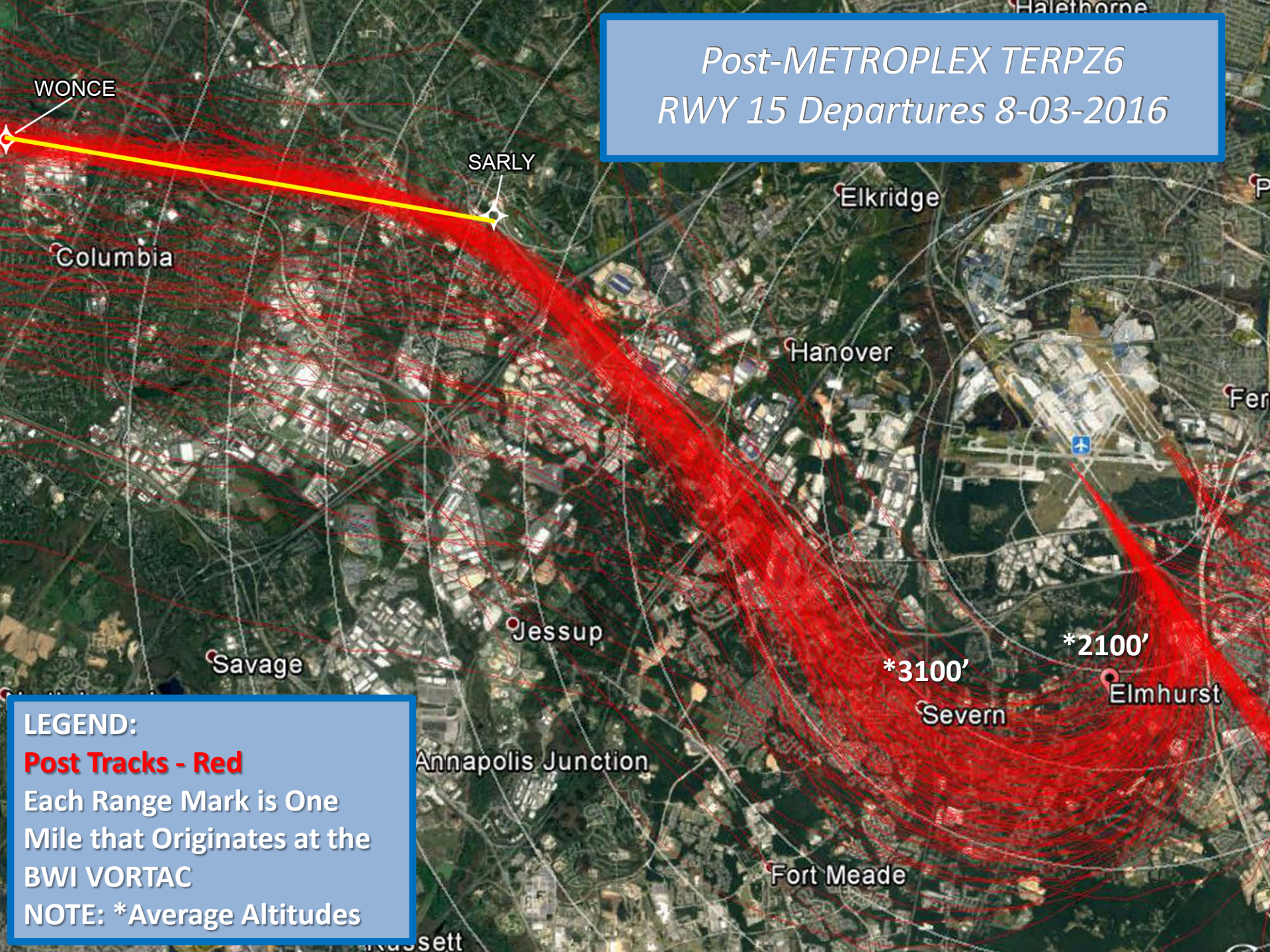
**Mid Tracks - Blue**

Each Range Mark is One  
Mile that Originates at the  
BWI VORTAC

NOTE: \*Average Altitudes



*Post-METROPLEX TERPZ6  
RWY 15 Departures 8-03-2016*



**LEGEND:**

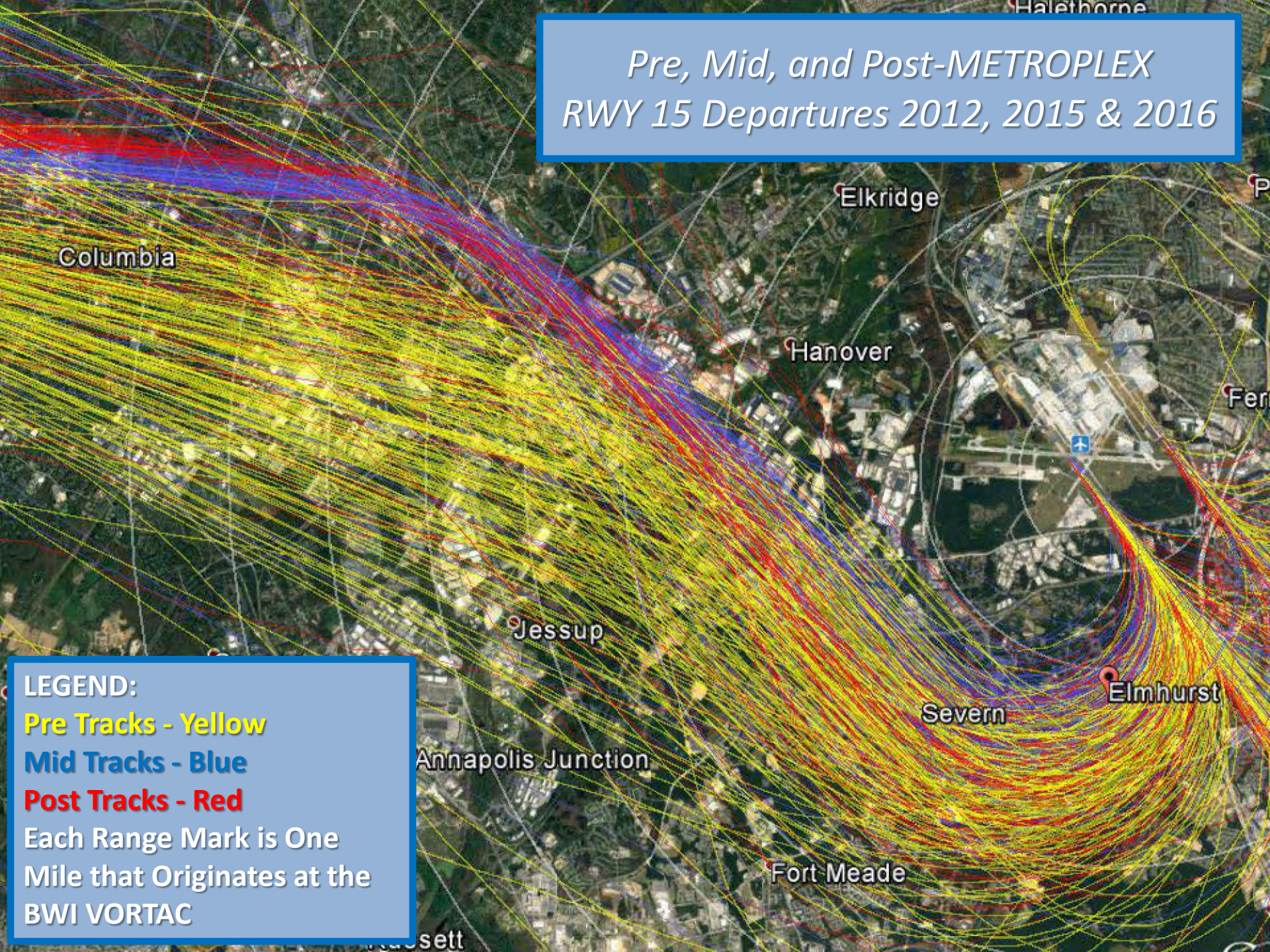
**Post Tracks - Red**

Each Range Mark is One  
Mile that Originates at the  
BWI VORTAC

NOTE: \*Average Altitudes



# Pre, Mid, and Post-METROPLEX RWY 15 Departures 2012, 2015 & 2016



**LEGEND:**  
**Pre Tracks - Yellow**  
**Mid Tracks - Blue**  
**Post Tracks - Red**  
Each Range Mark is One  
Mile that Originates at the  
BWI VORTAC



# Pre-METROPLEX RWY 28 Departures 6-29-2011

## LEGEND:

**Pre Tracks - Yellow**

Each Range Mark is One  
Mile that Originates at the  
BWI VORTAC

NOTE: \*Average Altitudes

\*5700'

Ellicott City

\*2100'

Elkridge

\*2000'

Hanover

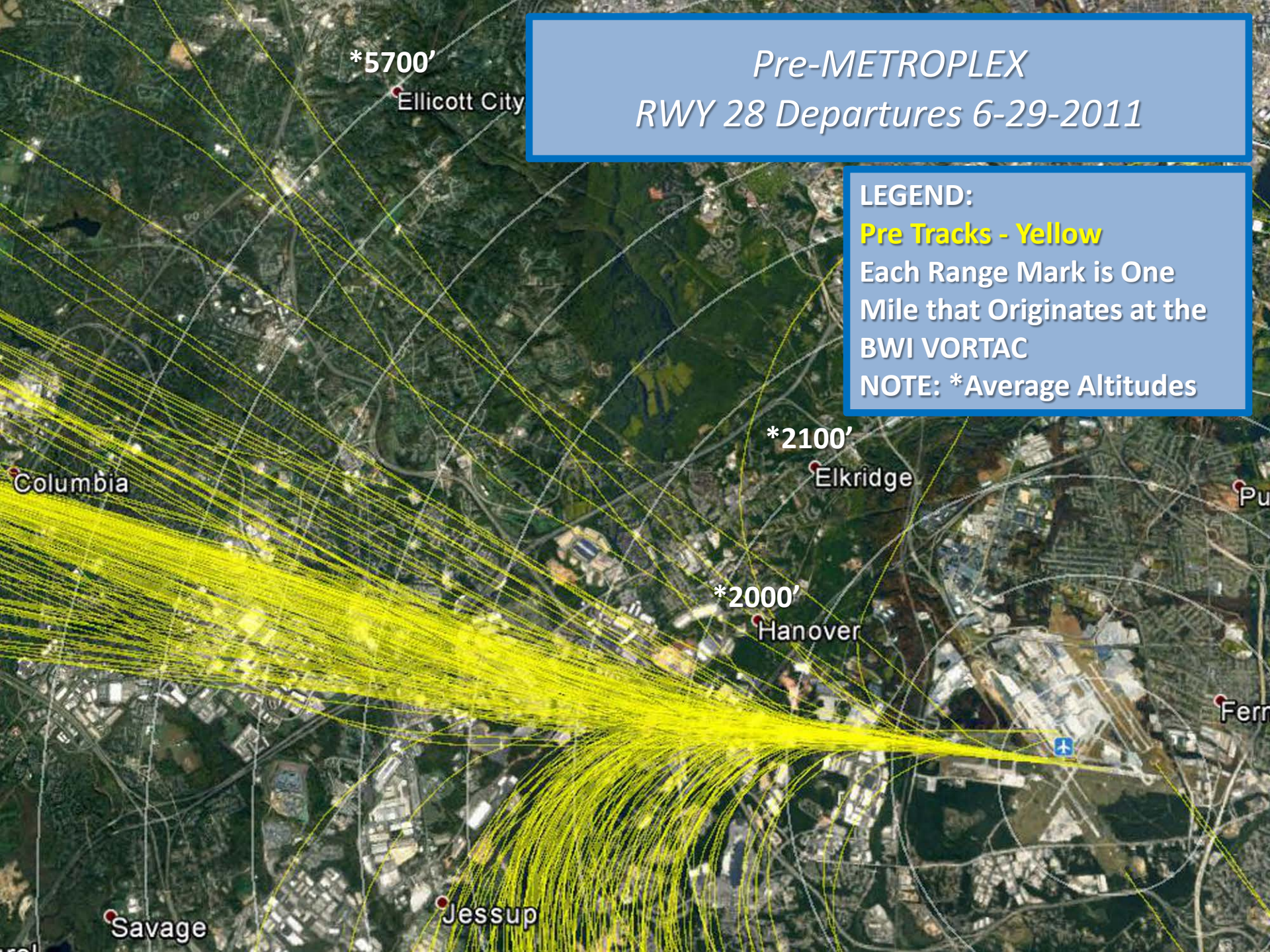
Columbia

Savage

Jessup

Ferris

Arrol





*Mid-METROPLEX TERPZ4-5 / CONLE  
RWY 28 Departures 5-15-2015*

**LEGEND:**

**Mid Tracks - Blue**

Each Range Mark is One  
Mile that Originates at the  
BWI VORTAC

NOTE: \*Average Altitudes

\*5700'

Ellicott City

WONCE

Columbia

Elkridge

\*2000'

Hanover

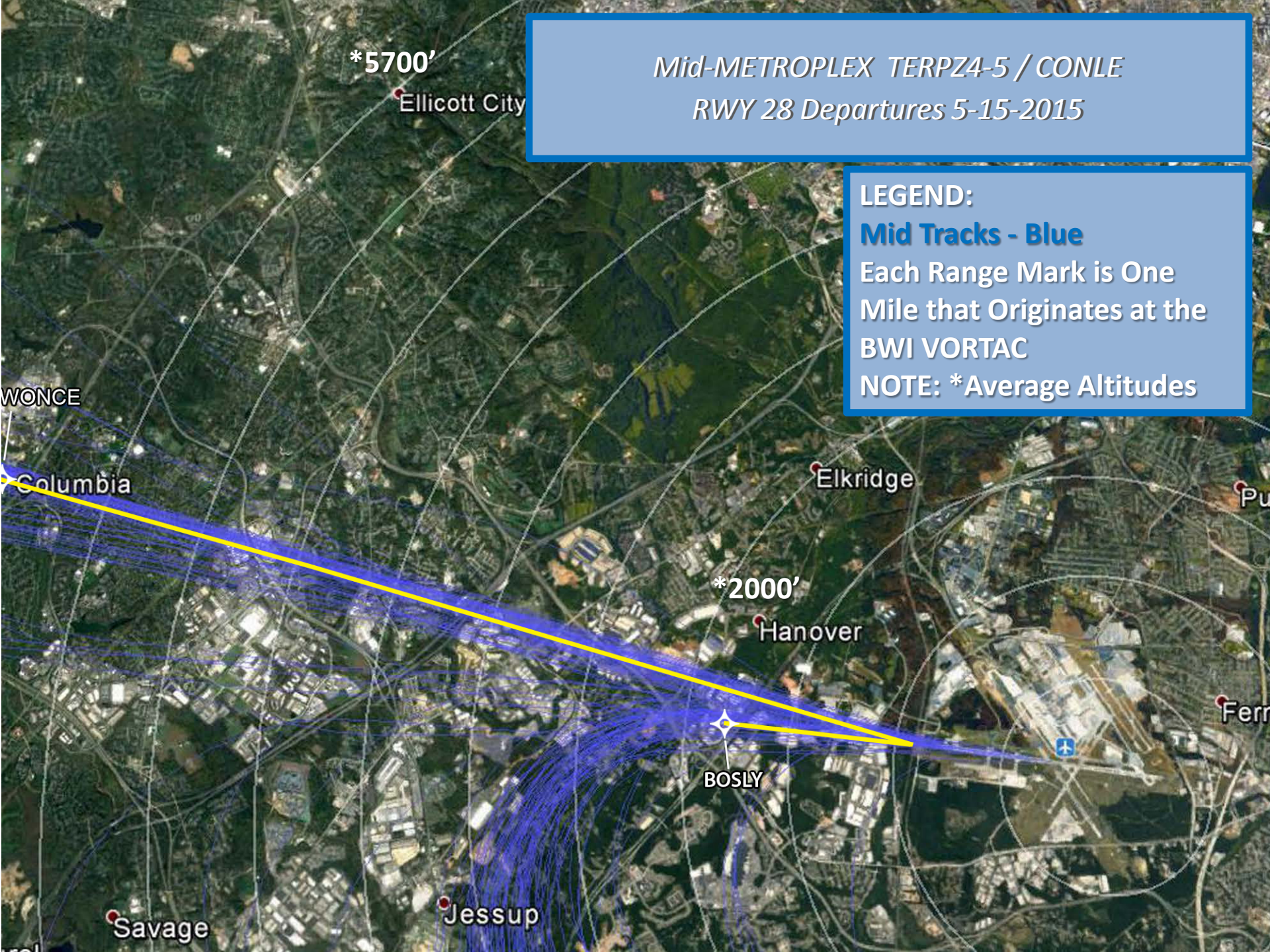
BOSLY

Savage

Jessup

Ferr

ral





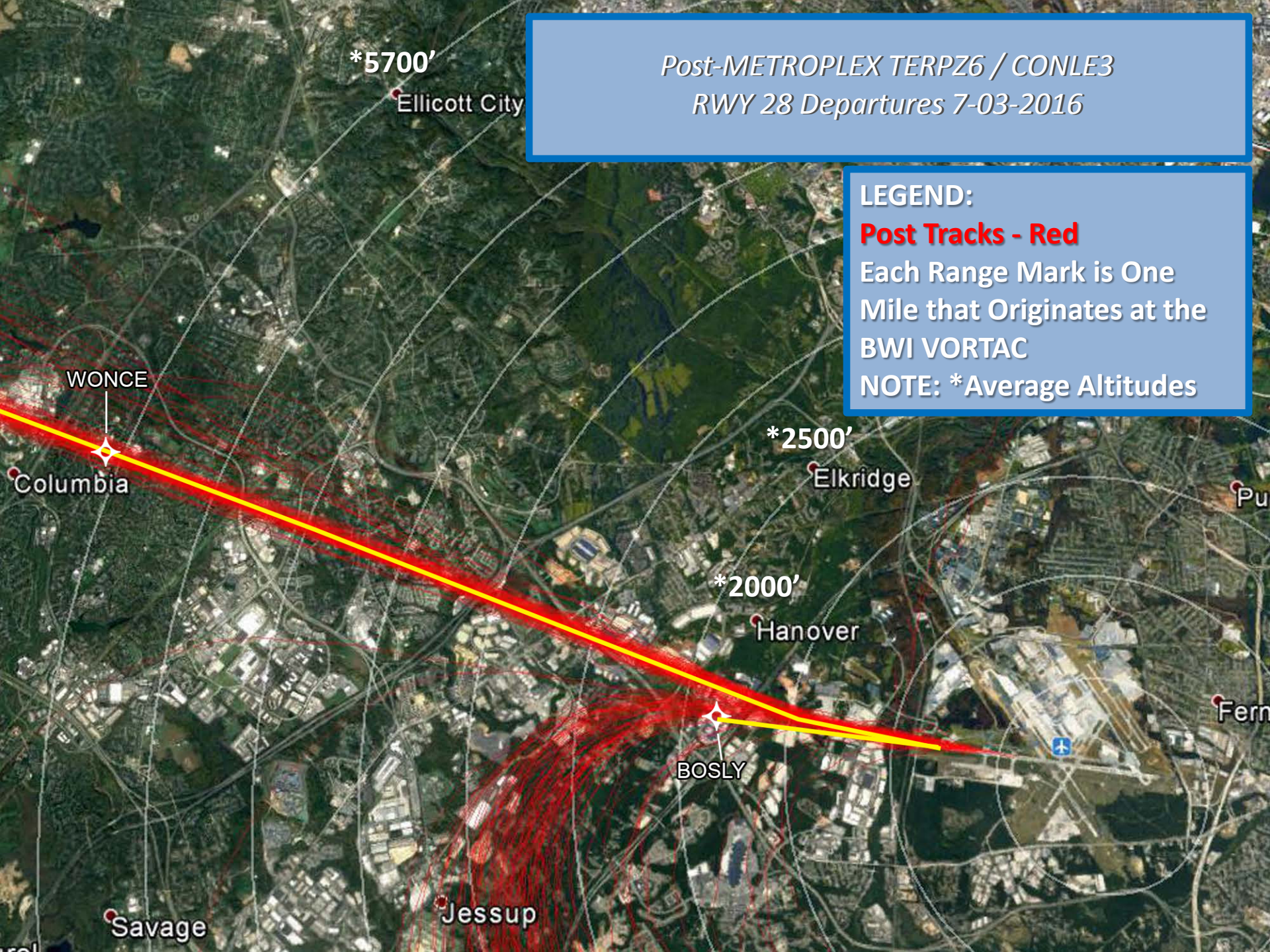
*Post-METROPLEX TERPZ6 / CONLE3  
RWY 28 Departures 7-03-2016*

**LEGEND:**

**Post Tracks - Red**

Each Range Mark is One  
Mile that Originates at the  
BWI VORTAC

NOTE: \*Average Altitudes



\*5700'

Ellicott City

WONCE

Columbia

\*2500'

Elkridge

\*2000'

Hanover

BOSLY

Savage

Jessup

Fern



*Pre, Mid and Post-METROPLEX  
RWY 28 Departures 2011, 2015 and 2016*

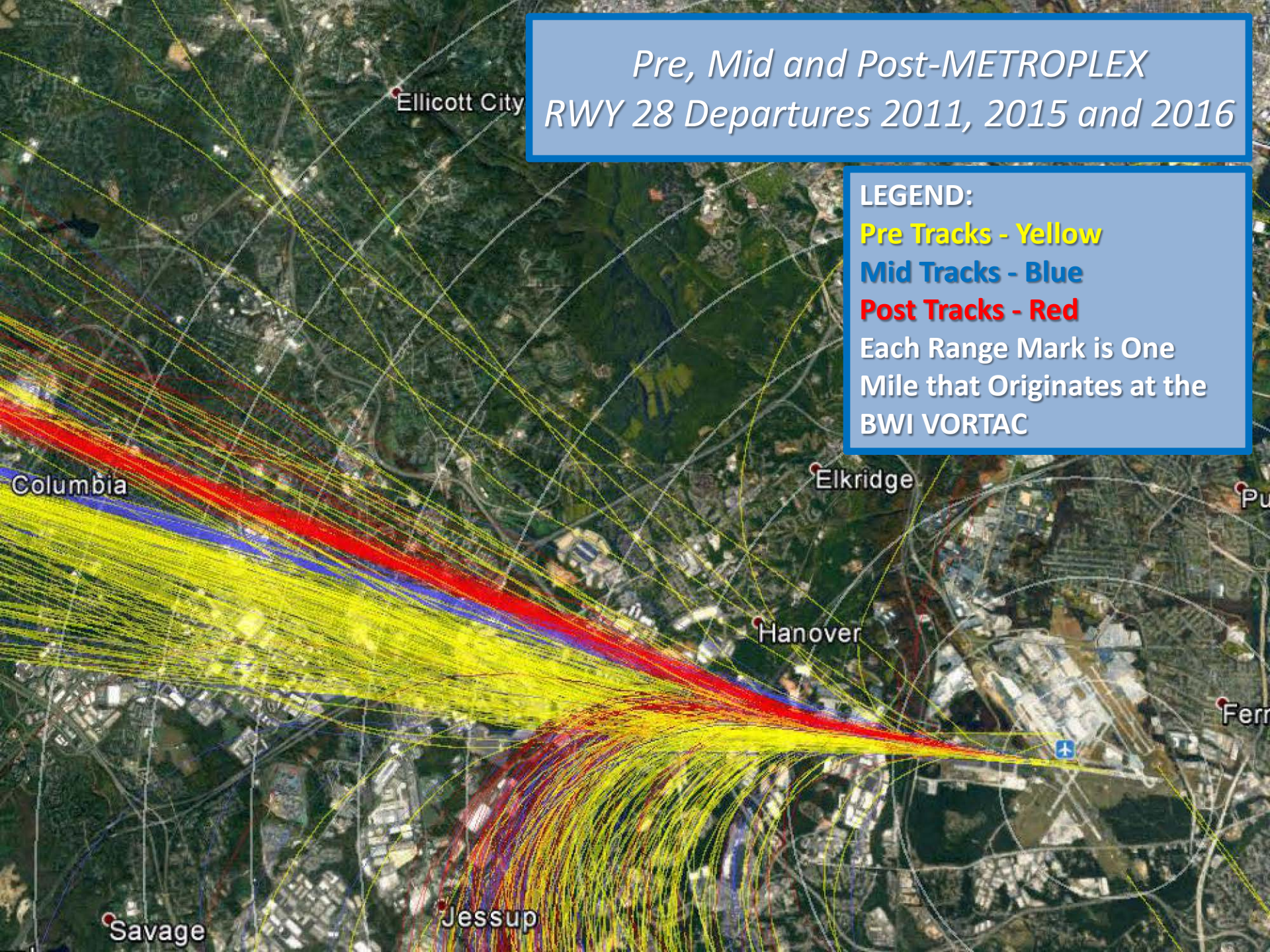
**LEGEND:**

**Pre Tracks - Yellow**

**Mid Tracks - Blue**

**Post Tracks - Red**

Each Range Mark is One  
Mile that Originates at the  
BWI VORTAC





*Pre-METROPLEX*  
*RWY 33 Arrivals 11-15-2012*

**LEGEND:**

**Pre Tracks - Yellow**

Each Range Mark is One  
Mile that Originates at the  
BWI VORTAC

NOTE: \*Average Altitudes

\*2000'

Millersville

\*2400'

Severna Park

\*3200'

Arnold

Crownsville

Pasadena

Lake Shore

Riviera Beach

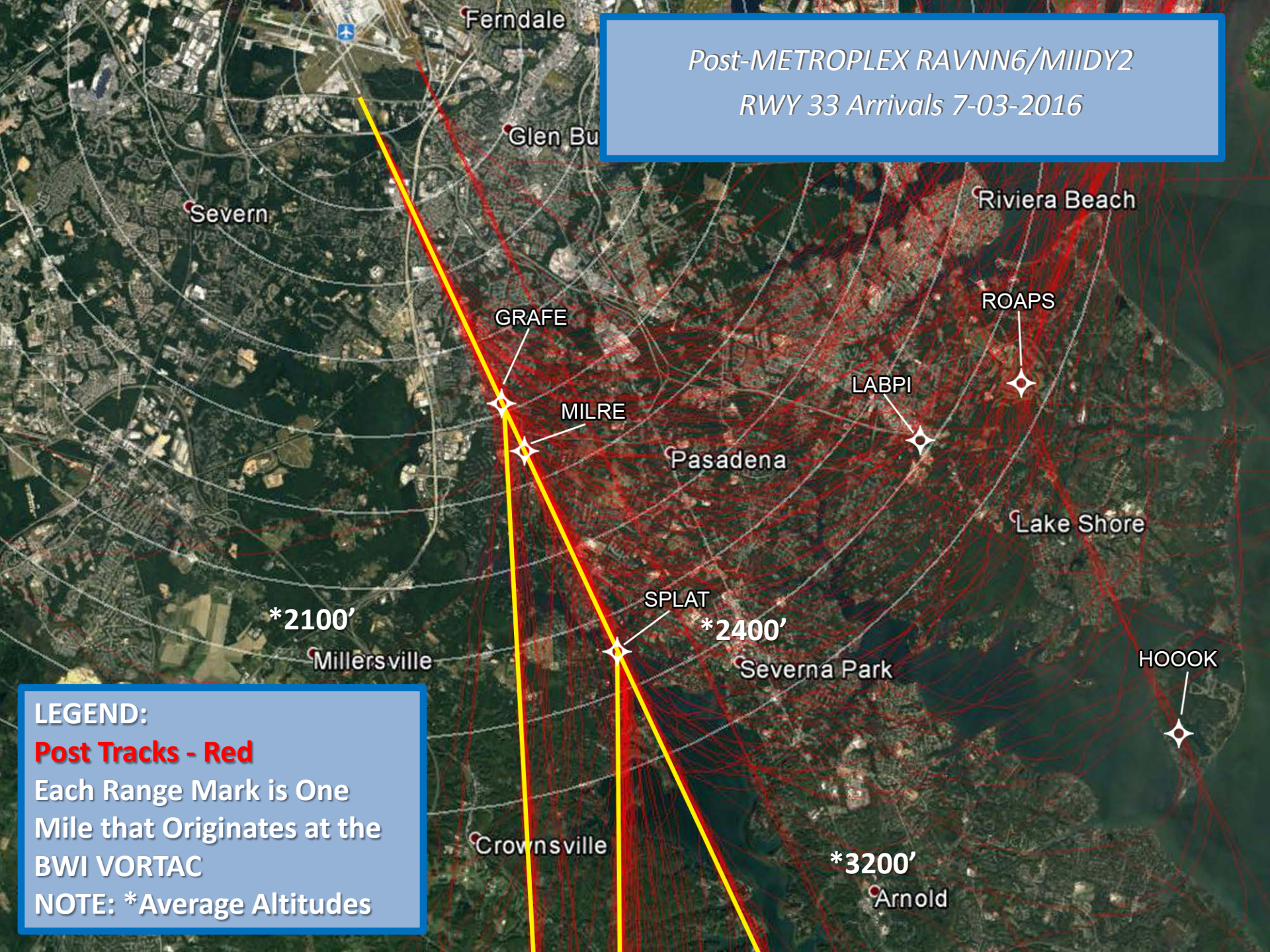
Severn

Ferndale

Glen Bu



Post-METROPLEX RAVNN6/MIIDY2  
RWY 33 Arrivals 7-03-2016



LEGEND:

**Post Tracks - Red**

Each Range Mark is One  
Mile that Originates at the  
BWI VORTAC

NOTE: \*Average Altitudes



*Pre and Post-METROPLEX  
RWY 33 Arrivals 2012 & 2016*

**LEGEND:**

**Pre Tracks - Yellow**

**Post Tracks - Red**

Each Range Mark is One  
Mile that Originates at the  
BWI VORTAC

Ferndale

Glen Bu

Severn

Riviera Beach

Pasadena

Lake Shore

Millersville

Severna Park

Crownsville

Arnold